

Certifying best practices in mineral exploration: a step towards an enhanced reputation

Leïla Ajjabou (1), Moritz Kirsch (1), Richard Gloaguen (1), Jon Russil (2), and the INFACT Consortium
(1) Helmholtz- Zentrum Dresden-Rossendorf, Helmholtz Institute Freiberg for Resource Technology, Germany
(2) SRK Exploration Services, Cardiff, UK

INFACT

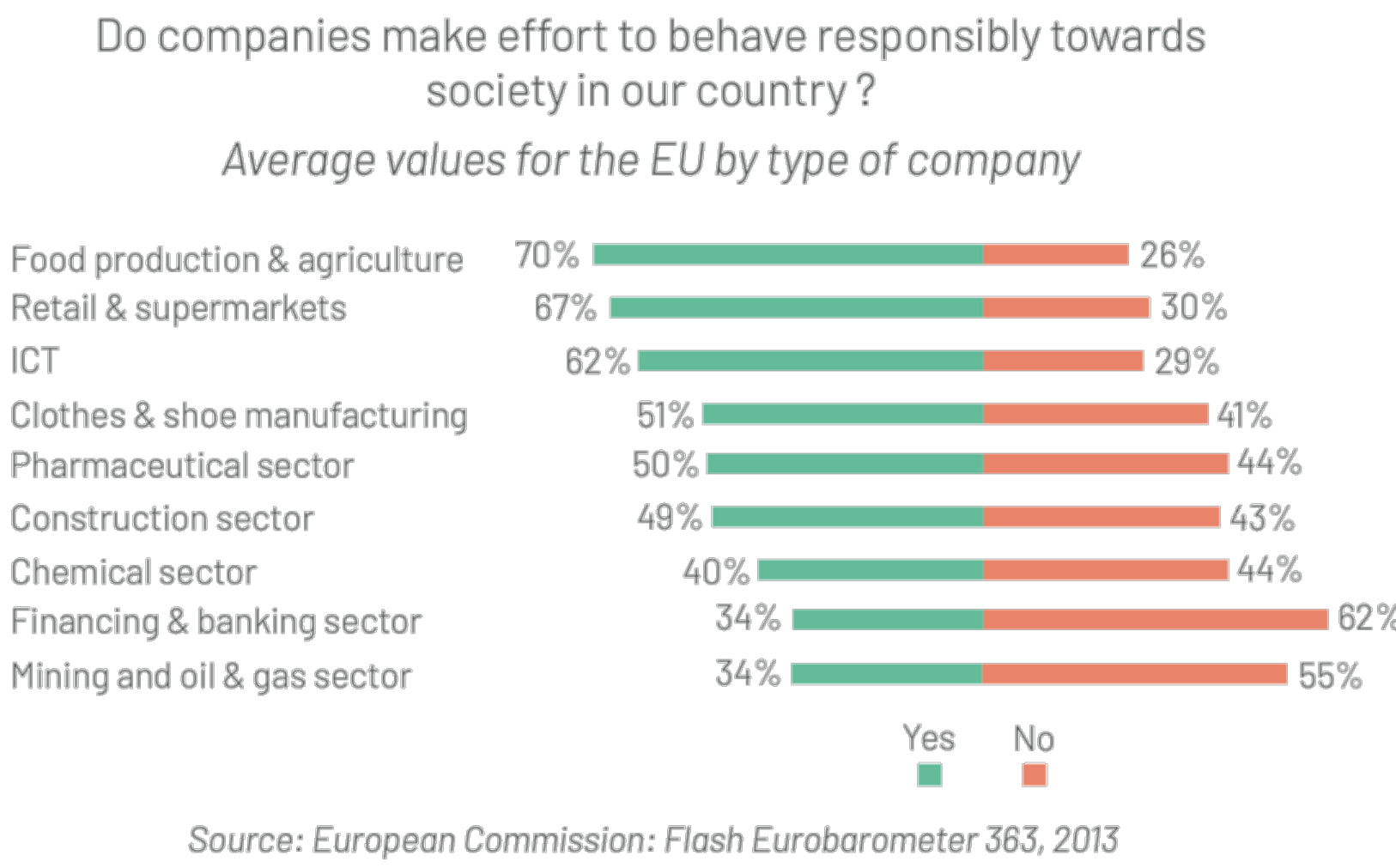
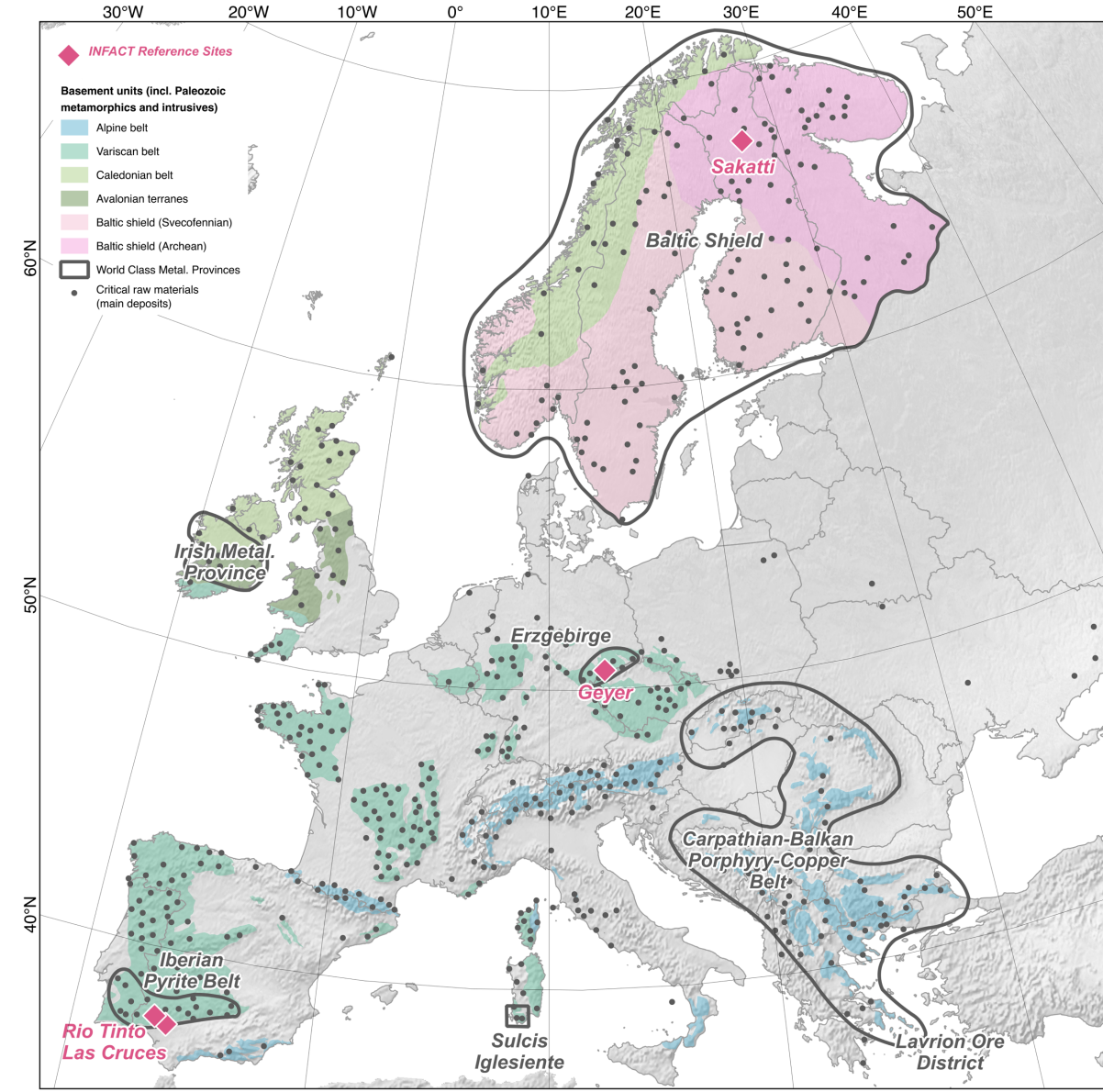
INNOVATIVE NON-INVASIVE & FULLY
ACCEPTABLE EXPLORATION TECHNOLOGIES

This presentation participates in OSPP

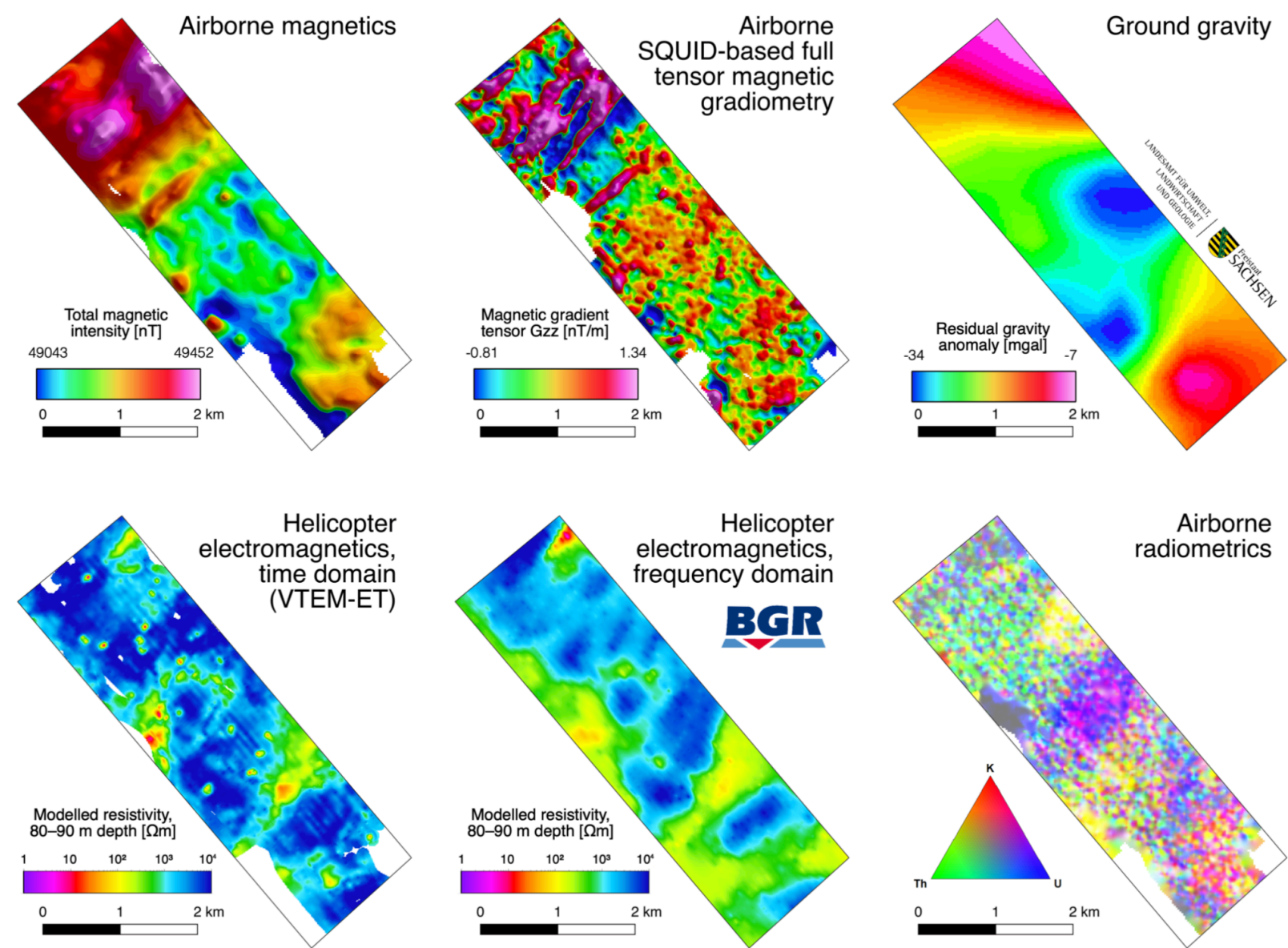
EGU
Outstanding Student
Poster & PICO Contest

Current Barriers to
Exploration in the EU:

- Land use
- Regulation
- Exploration Efficiency
- Securing a Social Licence



CONTEXT



EU Reference
sites for
Exploration

- Collect high-quality data sets
- Identify exploration targets



INFACT

Sakatti



- 150 kilometers north of the Arctic Circle
- Copper-nickel-platinum group elements deposit of Finnish Lapland
- Exploration license owned by Anglo American
- Natura 2000 protected area
- Remote location
- Reindeer herders – cultural heritage

Geyer

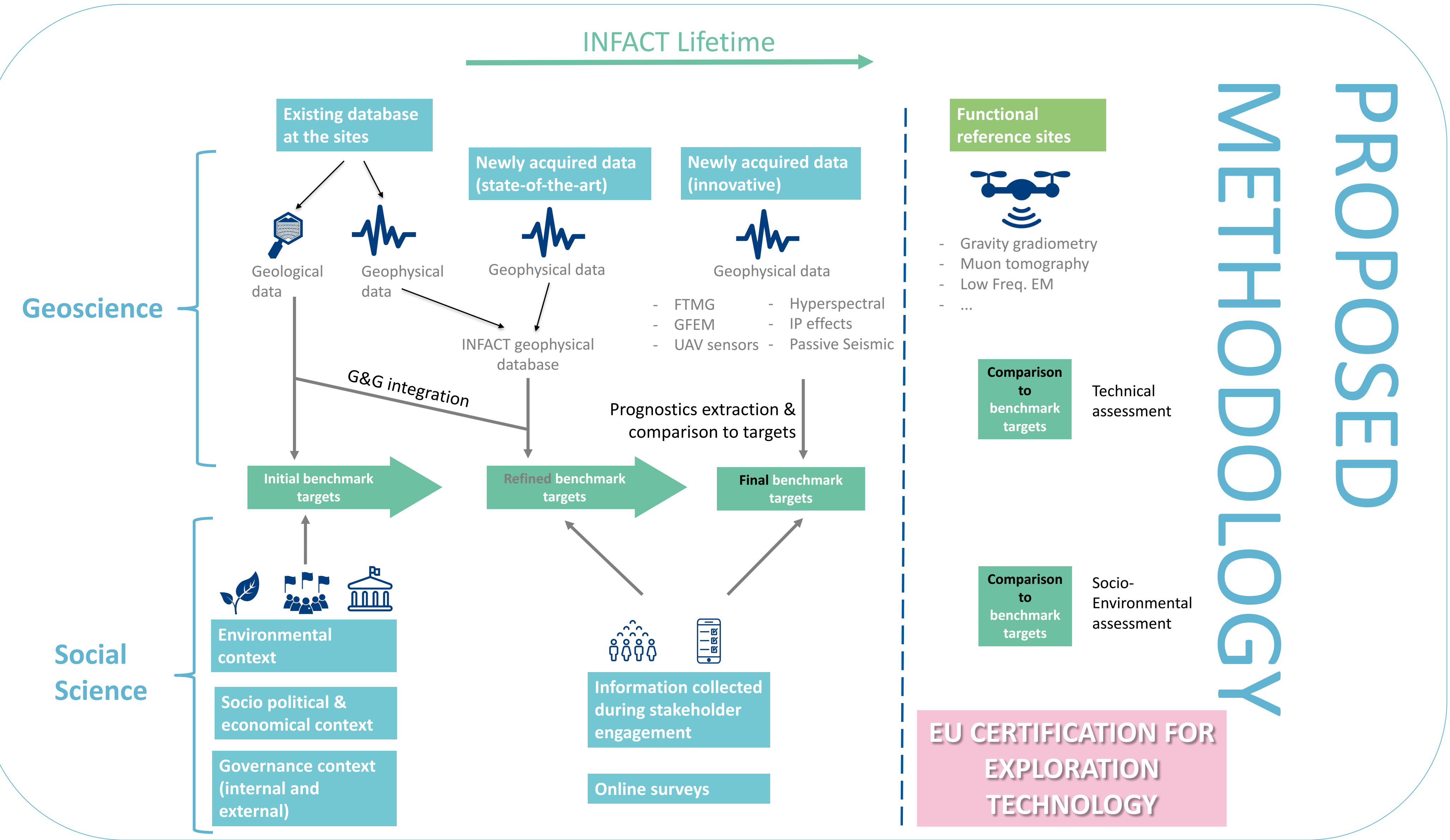


- Deposits of tin, zinc, tungsten, molybdenum, copper, iron, silver and indium
- 110 kilometers south of Leipzig, Eastern part of Germany
- Tourism - Erzgebirge
- High population density
- Long history of ore mining

Rio Tinto & Cobre Las Cruces



- Opencast polymetallic mine and Copper mining complex
- Operated by Atalaya Mining and First Quantum Minerals
- Long mining history - highly altered area
- Strong local mining identity
- Rural context, high socio-economic dependency on mining for Rio Tinto and Near metropolitan area of Seville for Las Cruces



Defining Socio-environmental benchmarks

Convincing Narrative

Narrative that links the innovation to the life world in which the persons are anchored.

Positive risk/ benefit ratio

Technological innovation must serve residents' interests.

Self Efficacy

People embrace technologies when they help them to enhance their choices and options to act.

Emotional Identity

Technological changes can alter the ways people define their own roles in their social environment.

