

WILDFIRE SPREADING ACROSS THE URBAN AREA: DEFINITION AND MAPPING OF VEGETATION CONNECTIVITY



Maria Polinova*, Haim Kutiel, Lea Wittenberg, Anna Brook

Department of Geography and Environmental Studies, University of Haifa

Urban wildfires

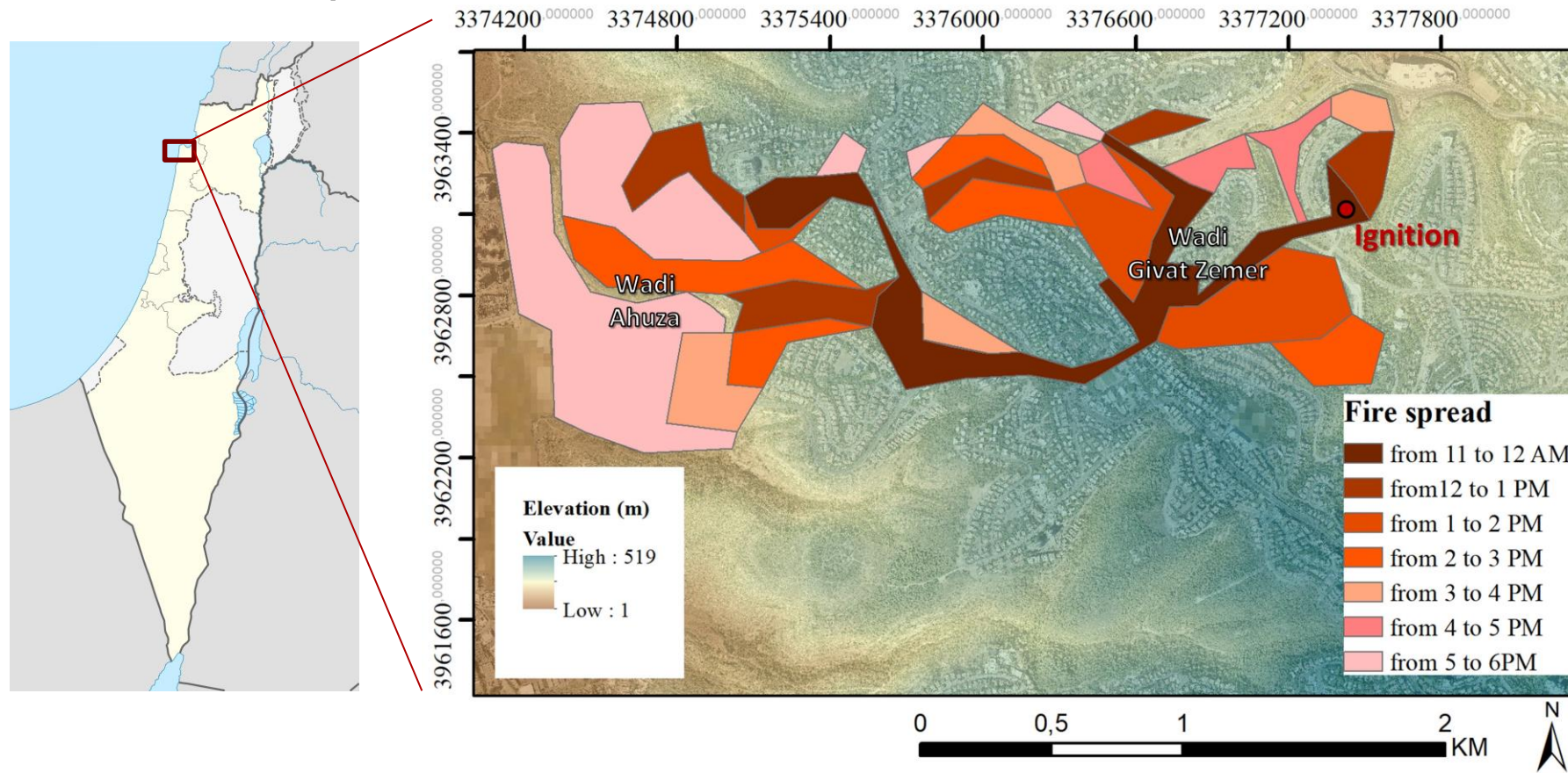
The proximity of a wildfire to urban areas multiplies the potential fire hazard. Simultaneously, anthropogenic activity near or directly on the natural landscape increases the risk of the fire.

Currently, these areas are managed in the Wildland-Urban Interface (WUI) concept framework. WUI declares the non-flammability of the cities due to insignificant amount of fuel in these territories. The special land-use regime near cities, forming buffer zones, and compact urban planning were convenient approaches to reduce fire hazards in WUI.



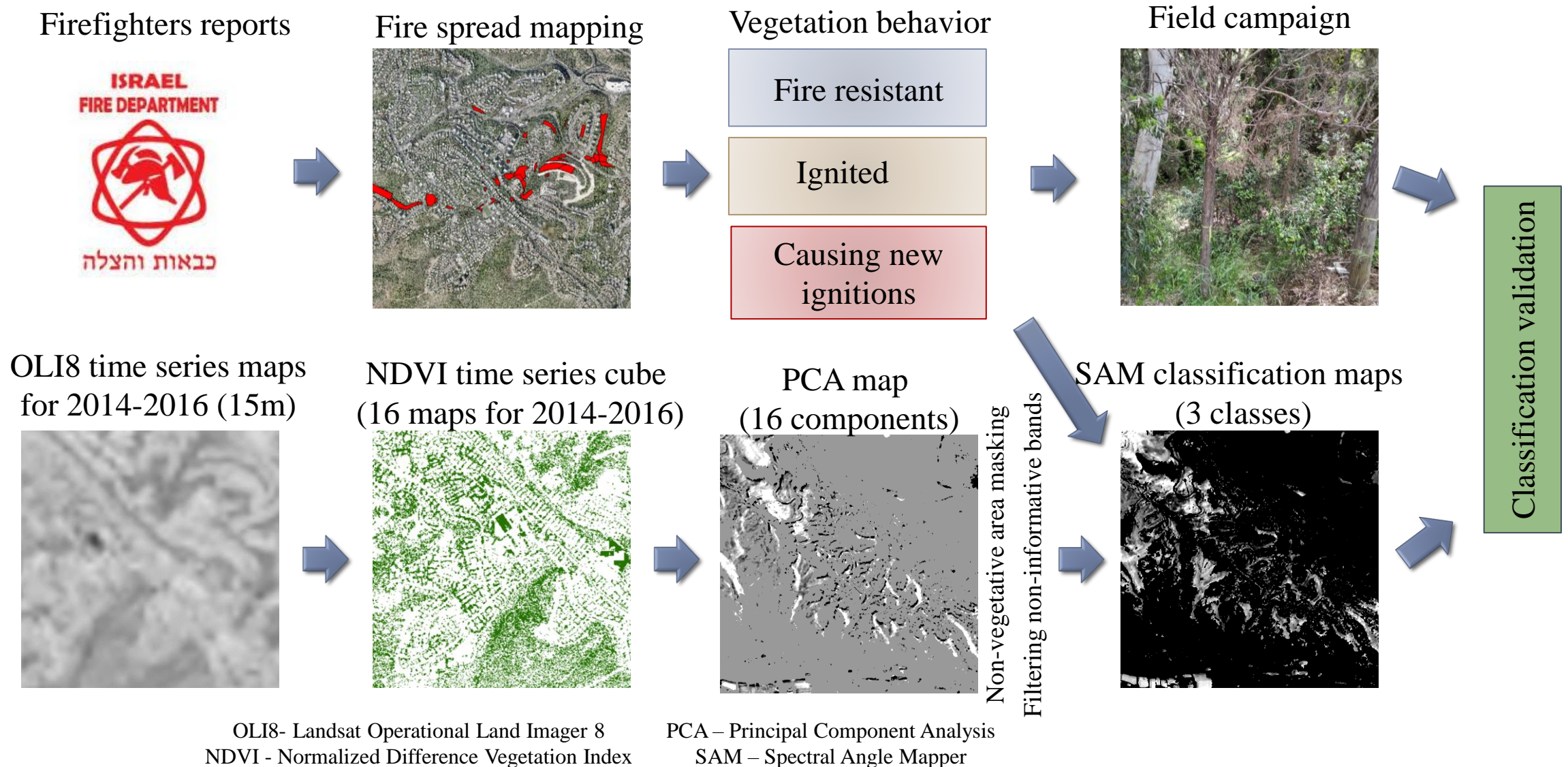
Nevertheless, experience has proven the ineffectiveness of the fire-resistant city approach: wildfires not only penetrate the city, but also cross it using urban vegetation as fuel: Greece (Athens 2009&2015, Thasos 2016, Mati 2018), France (Marseilles 2009&2016), Spain (Javea 2012&2016) etc.

Case study: wildfire on November 24, 2016 in Haifa (Mount Carmel), Israel



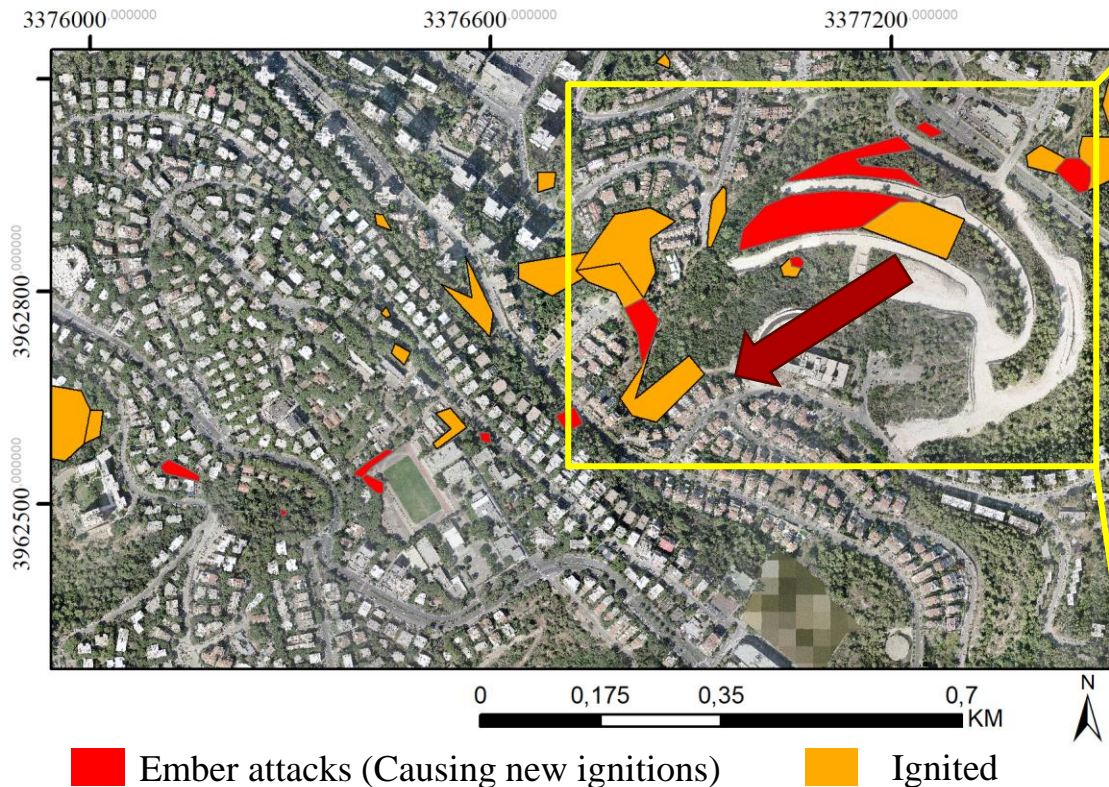
Haifa's wildfire lasted nearly twenty-four hours despite all efforts. The fire fighting was complicated due to strong dry winds that supported rapid fire spread. To ensure safety, sixty thousand people were evacuated from the fire risk zone. According to the initial assessment, 13 ha was burned, and the total damage amounted to €100 million.

Methodology

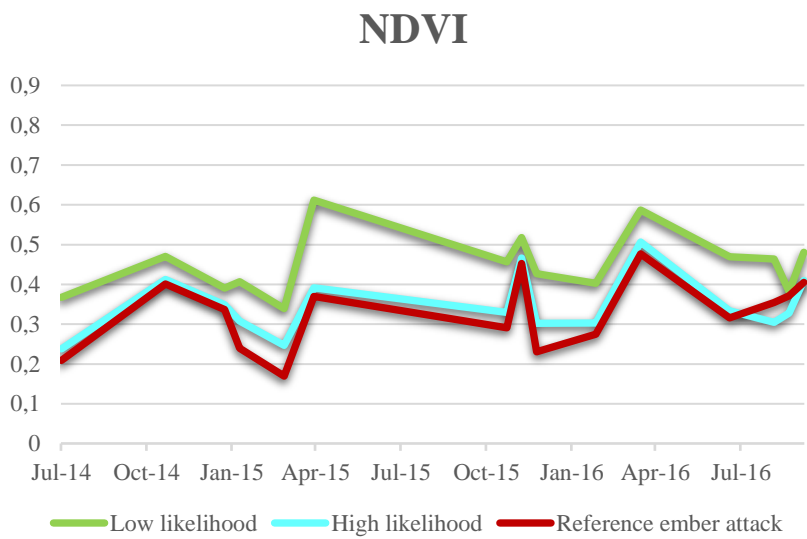
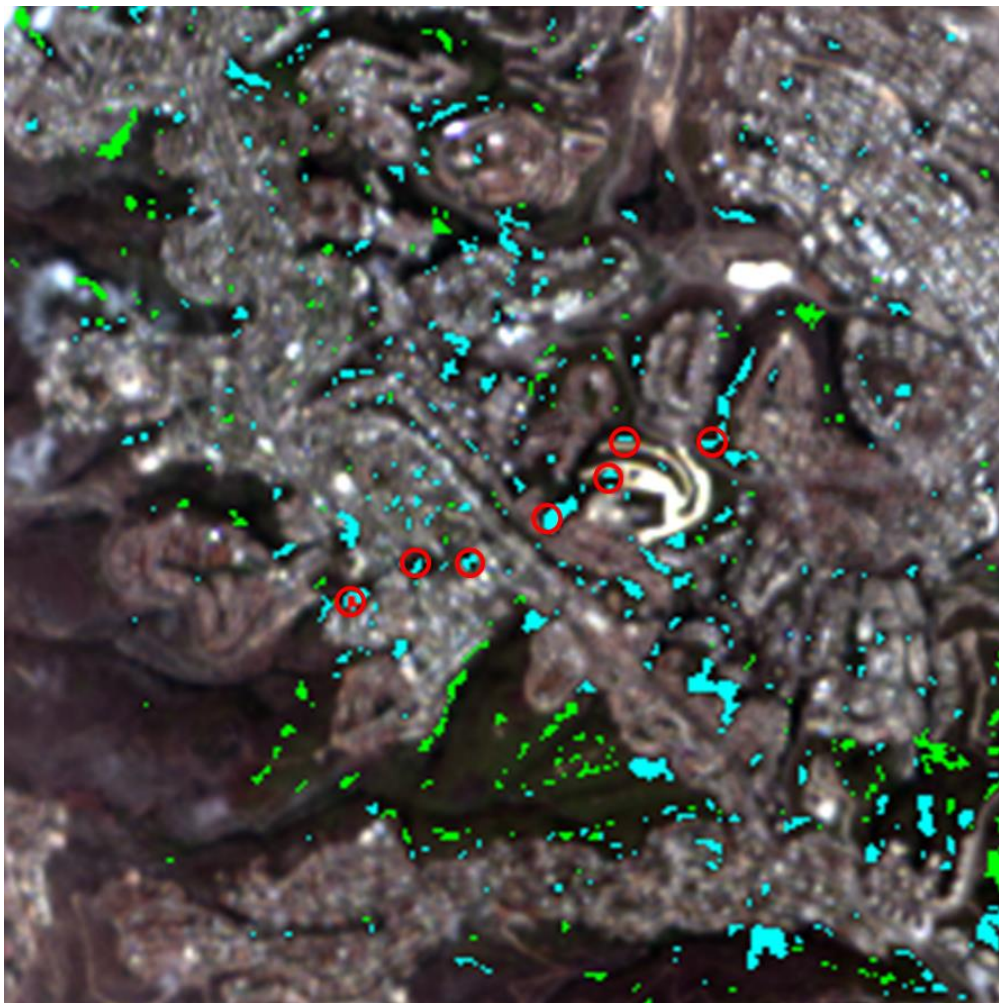


Results: fire behavior patterns and role of vegetation

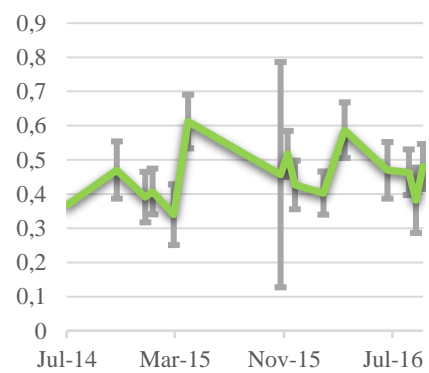
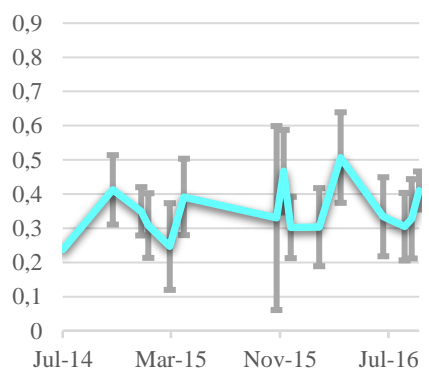
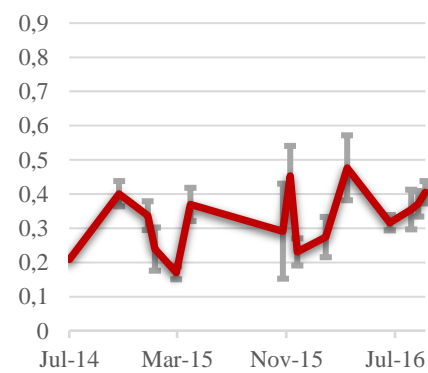
1. The fire was mainly affected by local wind and effects produced by complex topography and buildings.
2. The fire movement along the slope in contrast to the wind direction was caused by a relatively large ignited vegetation area.
3. The main propagation strategy at the beginning of the event was ember attacks, while in the last hours the fire mainly propagates on the dense vegetation regardless of other parameters



Results: 'Ember attacks' SAM classification



The main difference between 'ember attacks' from other vegetation is low NDVI. This effect is especially noticeable in the winter. Most of the estimated high likelihood areas are adjacent to built-up environment



High likelihood Low likelihood Actual ember attacks Reference ember attack

High likelihood Low likelihood

Validation: field campaign in winter 2019/2020



High likelihood patches

The surveyed areas were standing alone trees (mainly coniferous - *Pinus halepensis*) surrounded by timber litter and scarce young shoots of shrubs.



Medium likelihood patches

The examined patches represent composition of deciduous and coniferous trees (*Pinus halepensis*, *Pistacia* spp and *Ceratonia Silīqua*) mixed with densely grown shrubs.



Low likelihood patches

The most part of estimated area lays out of the built-up environment and presents itself shrubs and sparse stunted trees growing on the slopes of the mount Carmel. Inside the city, there were observed trees (*Punica*, *Nérīum*), bushes and urban green planting

Conclusion

- Urban areas are sensitive to wildfire because of connectivity: fire moves from one green patch to another, bypassing nonflammable structures
- Wildfire spreads in the urban area through ember attacks
- The **fire vegetation connectivity** in urban areas can be defined by fuel ability to ignite and reproduce new embers
- NDVI time series map allow to detect urban vegetation areas most likely to produce ember attacks in case of wildfire

Outstanding Doctoral Program 'Idit'



Thank you for your attention!

For more info please contact:

Maria Polinova - polinovamaria88@gmail.com

Anna Brook – abrook@geo.haifa.ac.il

Lea Wittenberg - leaw@geo.haifa.ac.il

Haim Kutiel - kutiel@geo.haifa.ac.il

