

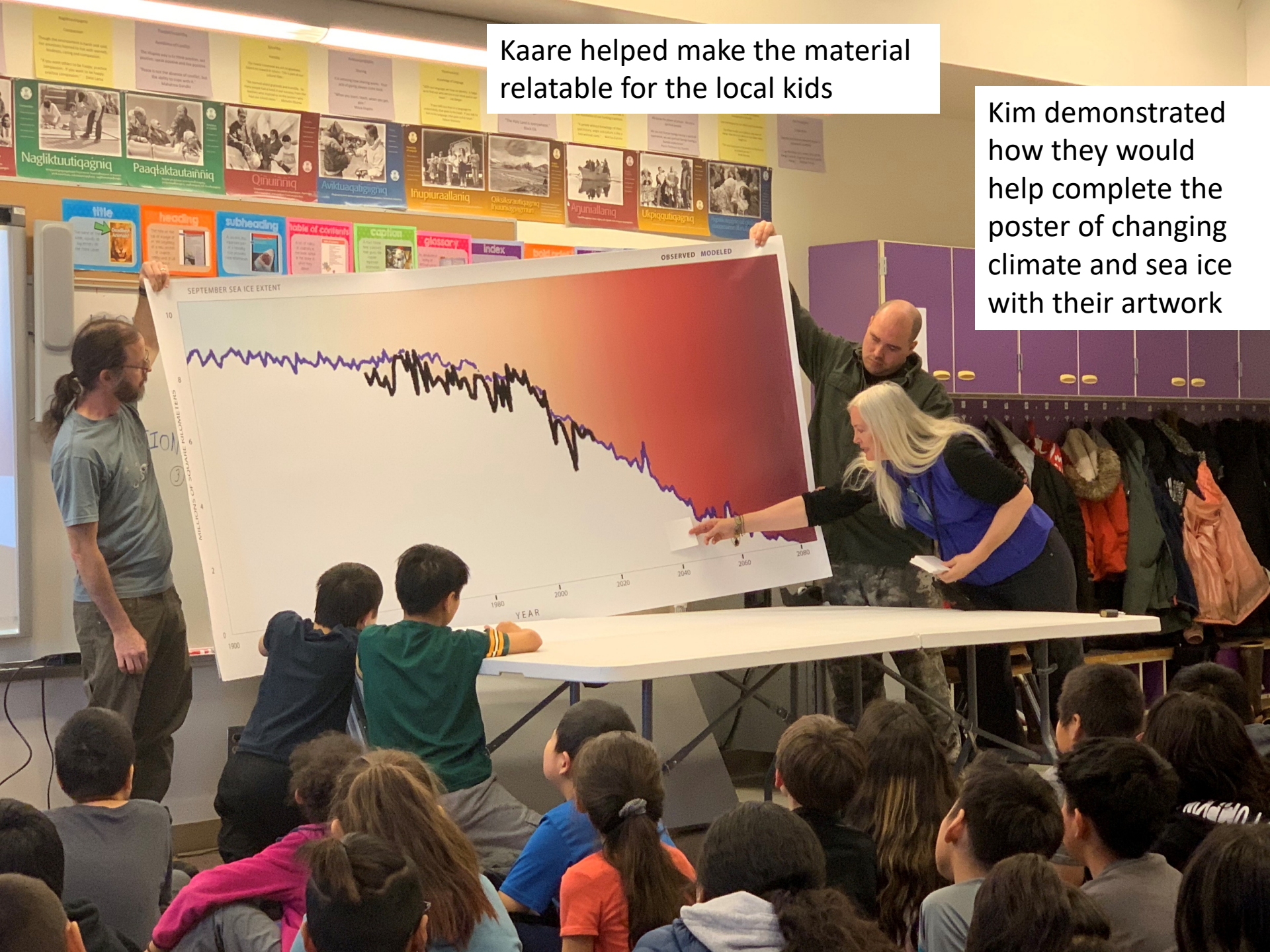
Supplemental material for EGU2020-12661, Voices of the Sea Ice: engaging an Arctic community to communicate impacts of climate change (Lipson, Reasor and Erickson)



David gave a short lecture about climate change and the local and global impacts of sea ice loss

Kaare helped make the material
relatable for the local kids

Kim demonstrated
how they would
help complete the
poster of changing
climate and sea ice
with their artwork





Kim working
with 5th graders

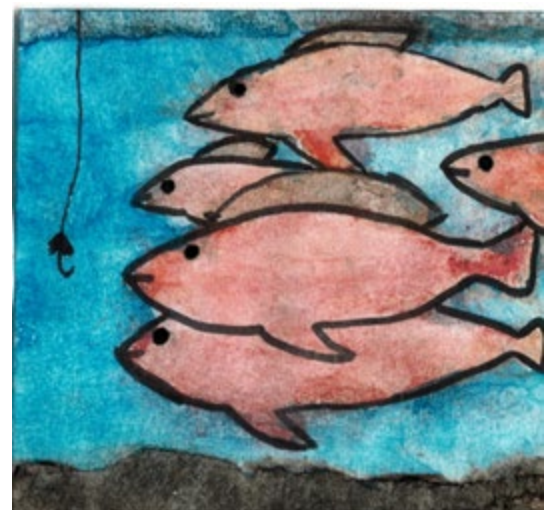


A few examples of the children's artwork



(Ceremonial drum)







Kids seeing the
finished product for
the first time

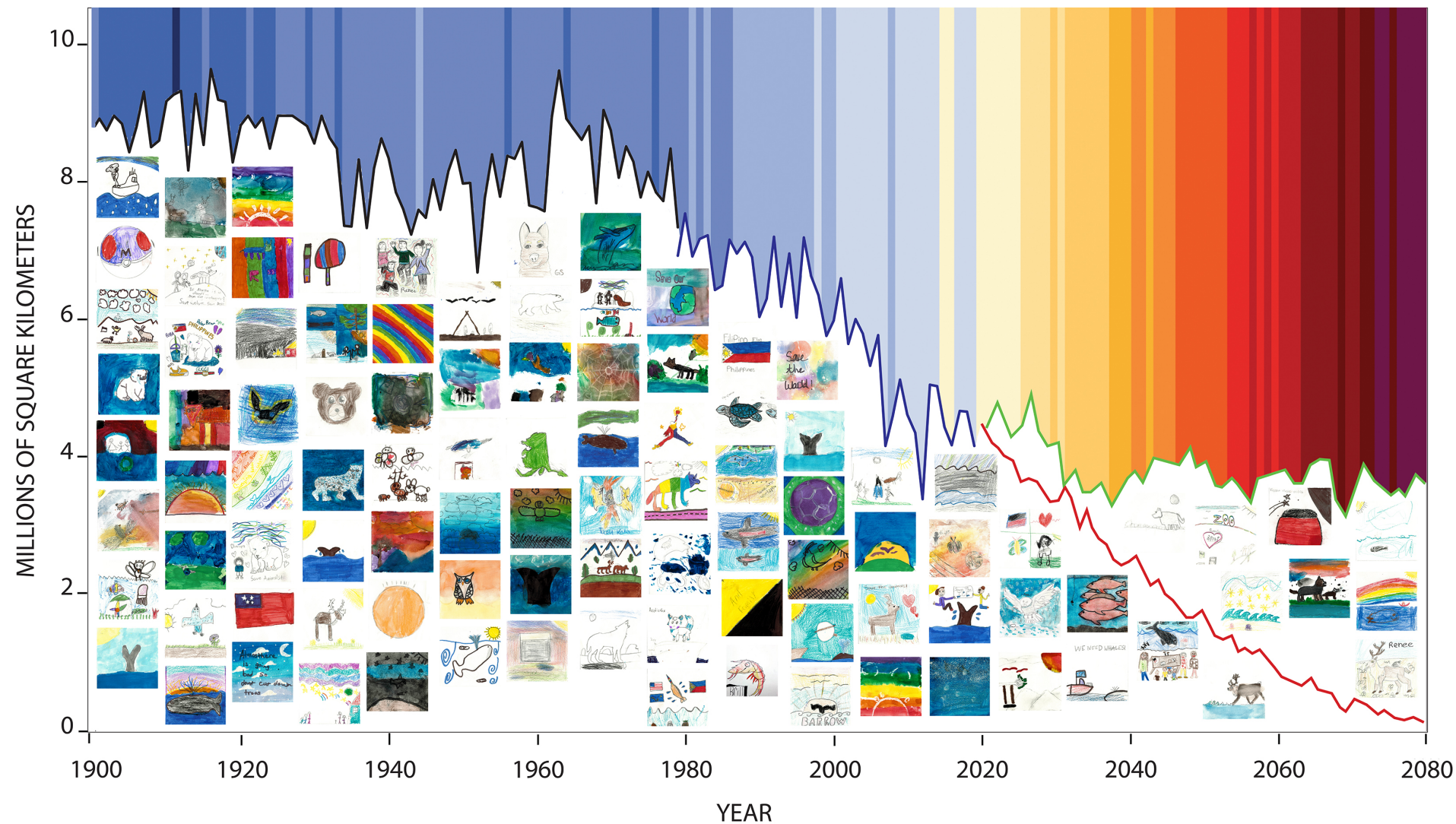
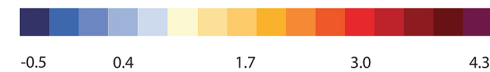




SEPTEMBER SEA ICE EXTENT

- Historical observations and reconstructions
- From satellite observations
- RCP 8.6 scenario
- RCP 2.6 scenario

Global Mean Annual Air Temperature (C°) Anomaly Relative to 1961-1990



©2020 David Lipson, Kim Reasor, Kååre Sikuaq Erickson

The final product in digital form (background upgraded to warming stripes for RCP8.6)