

The background of the slide is a dense, overlapping pattern of many small globes. Each globe is covered in a color-coded map, likely representing climate data, with colors ranging from purple and blue to yellow and orange. The globes are arranged in a way that creates a sense of depth and repetition.

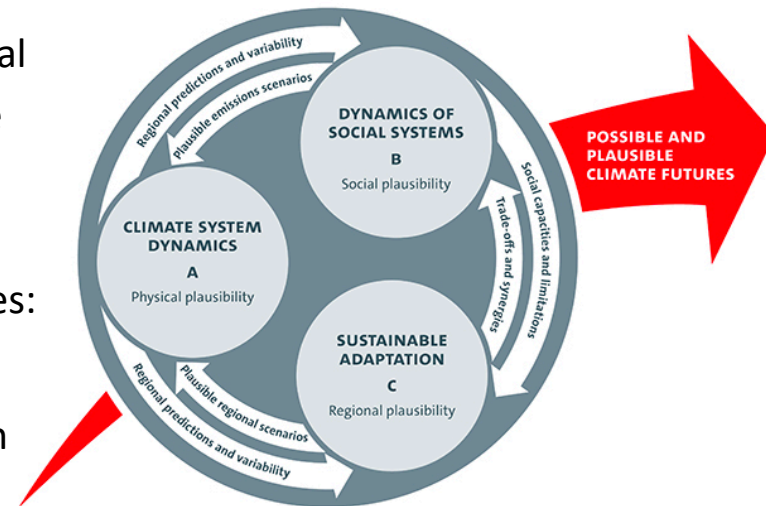
Ivonne Anders, Andrea Lammert, Karsten Peters
(DKRZ - German Climate Computing Center)

The challenging research data management support in the interdisciplinary cluster of excellence CLICCS

The cluster of Excellence CLICCS

In 2019 the Universität Hamburg was awarded funding for 4 clusters of excellence in the Excellence Strategy of the Federal and State Governments. One of these clusters funded by the German Research Foundation (DFG) is “**CLiCCS – Climate, Climatic Change, and Society**”. The scientific objectives of CLiCCS are achieved within three intertwined research themes:

- Theme A: Sensitivity and Variability in the Climate System
- Theme B: Climate-Related Dynamics of Social Systems
- Theme C: Sustainable Adaption Scenarios.



<https://www.cliccs.uni-hamburg.de/>

Each theme is structured into multiple projects addressing sub-objectives of each theme. More than **200 researchers** the Hamburg University, but also other connected research centers and partner institutions are involved and almost **all of them are using but mainly produce new data.**

What are we talking about?

Research Data Management ..

- refers to the **organization, storage, preservation and sharing of data** collected in a research project.
- involves **everyday management** of research data during a project's lifetime.
- also involves **decisions and practices** on data preservation beyond the lifetime of a scientific project.
- Involves the **push towards reproducible and comprehensible scientific results**



ESSI3.2 The Challenge:

- **interdisciplinarity** in this research cluster
- **acceptance** of Research Data Life Cycle Management in the research community
- **teaching the researchers**, with best practice examples
- **getting all** of the researchers **involved** over the 6 years of the lifetime of the research cluster
- **Not losing** information on **any output data**



ESS13.2 The Opportunity:

- **Develop researchers data awareness**
- **Develop Services on Research Data Management**
(e.g. RDMO for machine readable DMPs,
DMP Templates)
- Investigate best practices in RDM **to transfer to other big interdisciplinary projects**
- **Develop and manage access to big projects data collections spreaded over different repositories**
- Make the output visible, available and reusable during the project and after it ended.
→ **make it as OPEN as possible and FAIR**



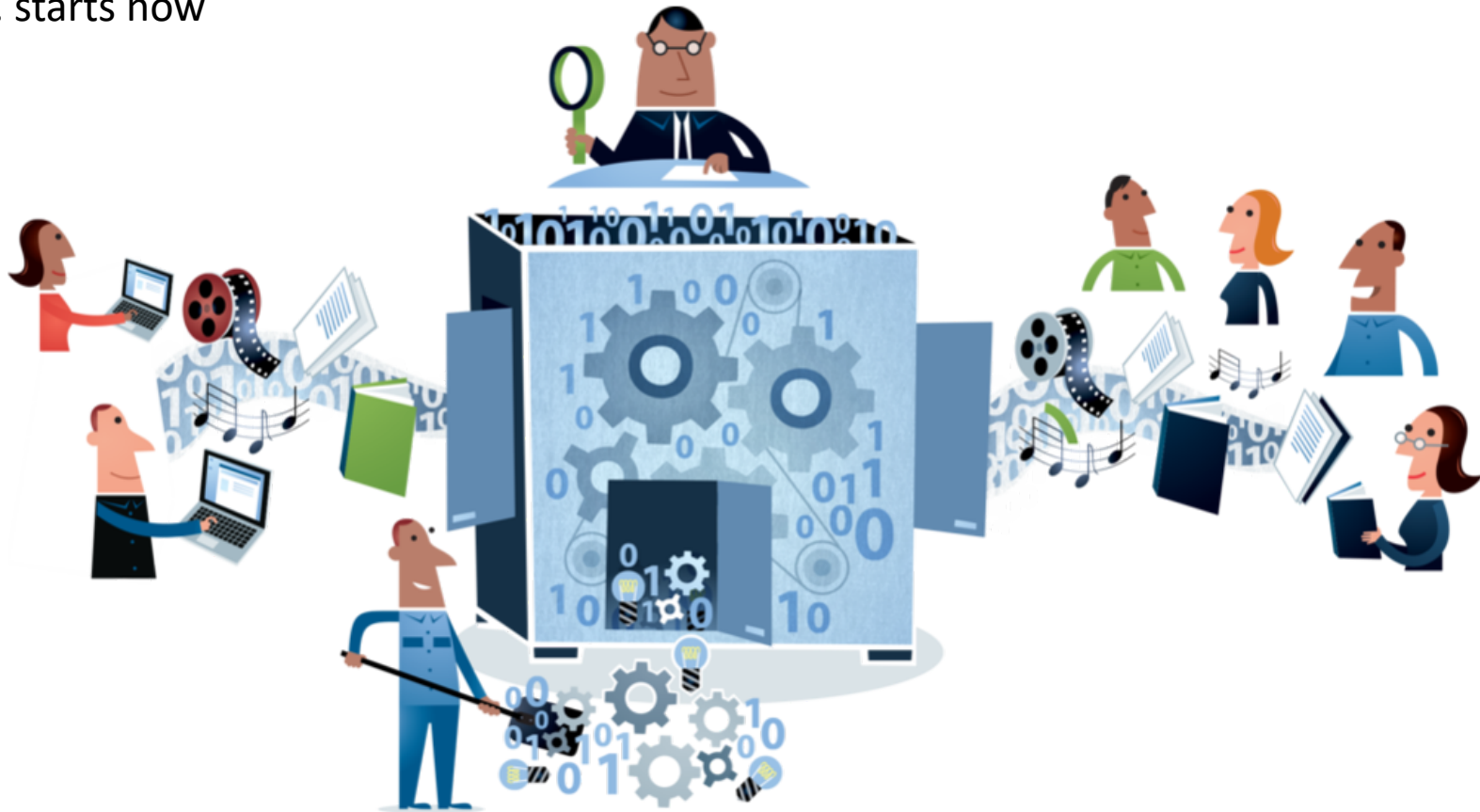
<https://rdmorganiser.github.io/>



<https://www.eudat.eu/services/b2find>

ESSI3.2 The Adventure:

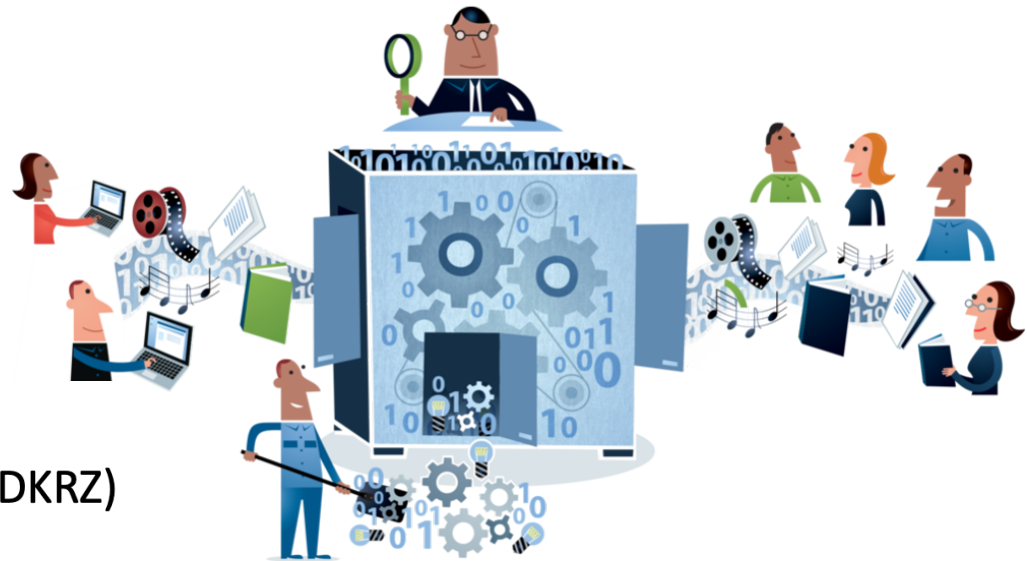
... starts now



Let's connect!

I look for Research Data Managers in other big interdisciplinary projects:

- to exchange experiences
and
- to think BIGGER!



Dr. Ivonne Anders
German Climate Computing Center (DKRZ)
Phone: +49 40 460094-426
Email: anders@dkrz.de
URL: www.dkrz.de