

PEEX HQ shares your research and events with its e-Newsletter, Blog, and social media:

E-Newsletter



PEEX Arctic-Boreal Hub Newsletter

News

The novel Coronavirus (COVID-19) has placed the World in a specially challenging time. The PEEX Headquarters wish everyone to remain safe during these times. It is moment to rearrange the way we work, communicate and collaborate. But also to strengthen it, PEEX HQ will continue to work building our PEEX community through this strenuous situation.



PEEX signed a new Memorandum of Understanding (MoU)
The new MoU was signed with the Institute of Computational Mathematics and Mathematical Geophysics SB, Russian Academy of Sciences (RAS). The MoU is a bilateral document to encourage the development of the PEEX program in Europe, Russia and China.



Arctic Urbanization Workshop
PEEX HQ hosted the Arctic Urbanization Workshop on 14-15 January 2020 in Kumpula Campus at University of Helsinki, Finland. The aim is to establish a series of studies around the Arctic cities.



Russian Academy of Science visit Finland
Prof. Alexei Gvishiani, Geophysical Center of Russian Academy of Sciences (RAS) visited the SMEAR II station in Hyttälä, Finland on 4 Feb. During his visit further collaboration between RAS and PEEX is expected.

PEEX Blog



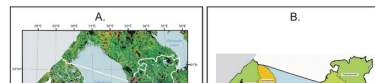
Lauriane was the first to wave goodbye at the Norwegian coast and embark on the dark cruise for the following 3 months. This January she returned and has some news to share.



Photo: Lauriane Quéléver onboard I
MOSAIC expedition on the Delphin

What is the purpose of MOSAIC overall.
The Multidisciplinary drifting Observatory for the

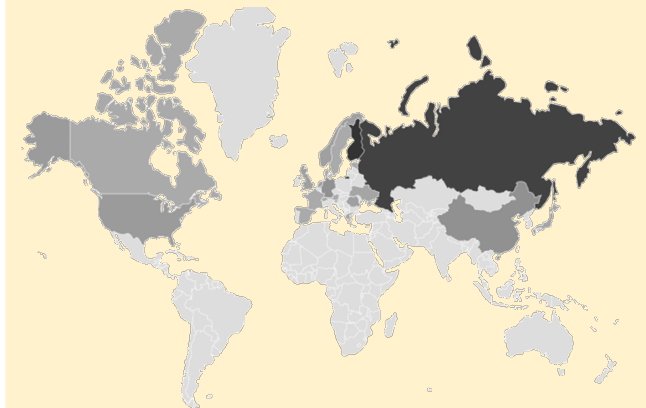
Further development of the thermodynamic approach made it possible to propose a method for remote mapping of accumulated ecological damage in monetary terms (Gorny et al., 2013). As seen in Fig. 3, for the Leningrad Oblast' the biggest accumulated ecological losses were recorded in the Bolshoygor'skiy administrative county (47.7 billion rubles). The smallest one is in the Lomonosovskiy county (0.8 billion rubles). Such maps allow to objectively compare administrative counties according to the level of accumulated ecological losses in forest ecosystems as well as to provide possibility for taking a series of reasonable economic measures to parry observed this damage.



International

Top readers:

Finland, Russia, China, USA



E-Newsletter + Blog:



PEEX Arctic-Boreal Hub Newsletter

In this issue:

[News](#)
[PEEX Blog](#)
[Upcoming conferences](#)
[PEEX Special Issue publications](#)

[Education](#)
[Visual Corner](#)
[UArctic](#)
[Future Earth](#)

Upcoming conferences and meetings

News

The novel Coronavirus (COVID-19) has placed the PEEH Headquarters with everyone to remain safe and rearrange the way we work, communicate and collaborate. HQ will continue to work building our PEEH community.



Digital Belt and Road Program conference (DBAR 2018)
DBAR will hold its 3rd DBAR Conference on 5-7 December 2018, Tengchong, China. Registration is now open in the conference [website](#).

International Symposium on Digital Earth (ISDE 11)

We are pleased to host the Symposium in September in Italy. The Transforming Sponsors

HiMAC 2018
The 2nd International Undersea Regions (Arctic Sp (FMI), in situ and physical scientists Climate on Earth. HiMAC2018



P
U
T
C
N
A
B
d
R



Advisor position at the Indigenous Peoples' Secretariat (IPS) in Tromsø
The IPS has a full-time position available for an advisor who can demonstrate a professional background and relevant experience and who is ready to take on a diverse portfolio of tasks while working in a multicultural and multilingual environment. [Read more](#).

Open call for PhD School in arctic Russia.
Northern Arctic Federal University (Arkhangelsk, North-West Russia) is pleased

Newsletter:

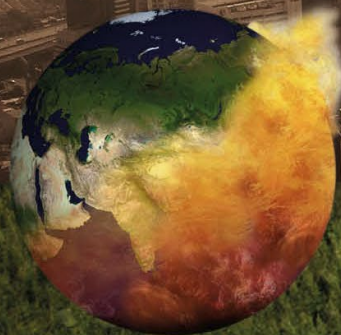
- 4 issues / year
- Part of UArctic network

BLOG:

- write your own text
- share your publications



Link to share
(in websites / social media)



Pan-Eurasian Experiment

PEEX

NEWSLETTER



Arctic-Boreal

HUB



UArctic

PEEX Partner Programme:

futureearth

Join us!

Share your research/articles/events with us!

Twitter: @PEEX_News

www.atm.helsinki.fi/peex

