

# Holocene chronology and tephrostratigraphy for the varved record of Diss Mere (UK)

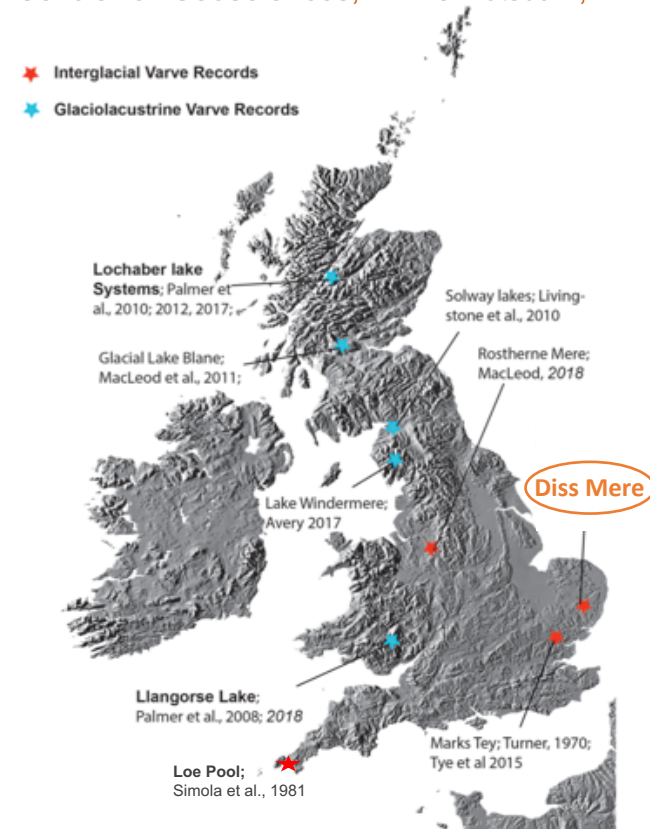
Celia Martin-Puertas<sup>1 \*</sup>, Amy Walsh<sup>1</sup>, Simon P.E. Blockley<sup>1</sup>, Poppy Harding<sup>1</sup>,  
George E. Biddulph<sup>2</sup>, Adrian Palmer<sup>1</sup>, Arne Ramisch<sup>3</sup>, Achim Brauer<sup>3,4</sup>

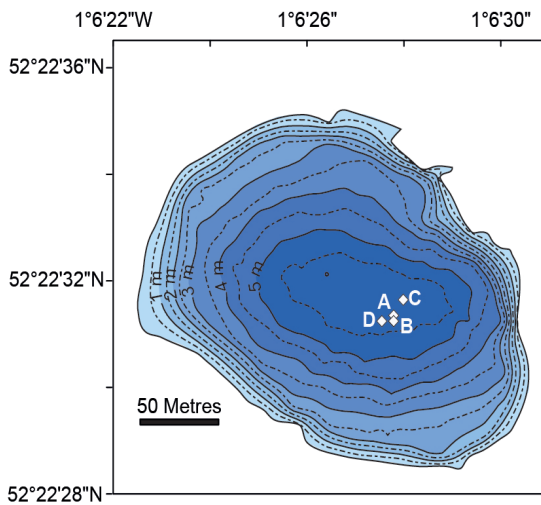
<sup>1</sup> Department of Geography, **Royal Holloway University of London**, Egham, Surrey TW20 0EX, UK; <sup>2</sup> Department of Geography, **University of St. Andrews**; <sup>3</sup> Climate Dynamics and Landscape Evolution, **GFZ German Centre for Geosciences**, 14473 Potsdam, Germany; <sup>4</sup> Institute of Geosciences, **University of Potsdam**, 14476 Potsdam, Germany.

## Diss Mere, Norfolk (England):

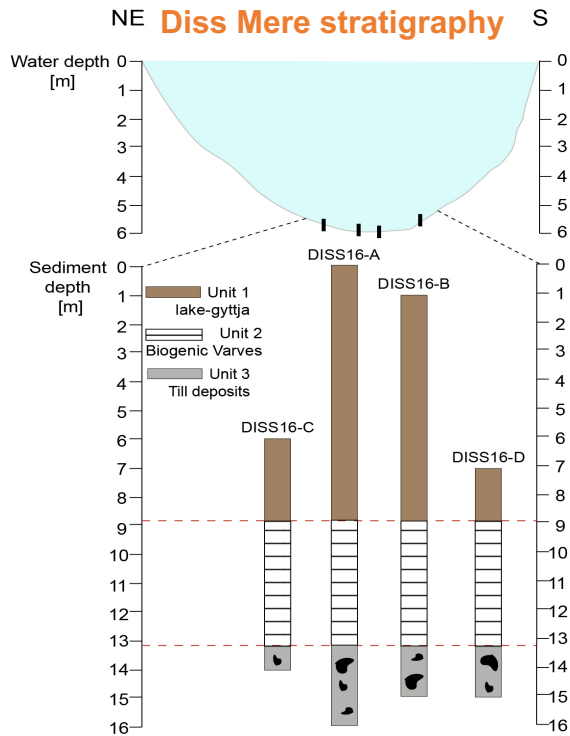
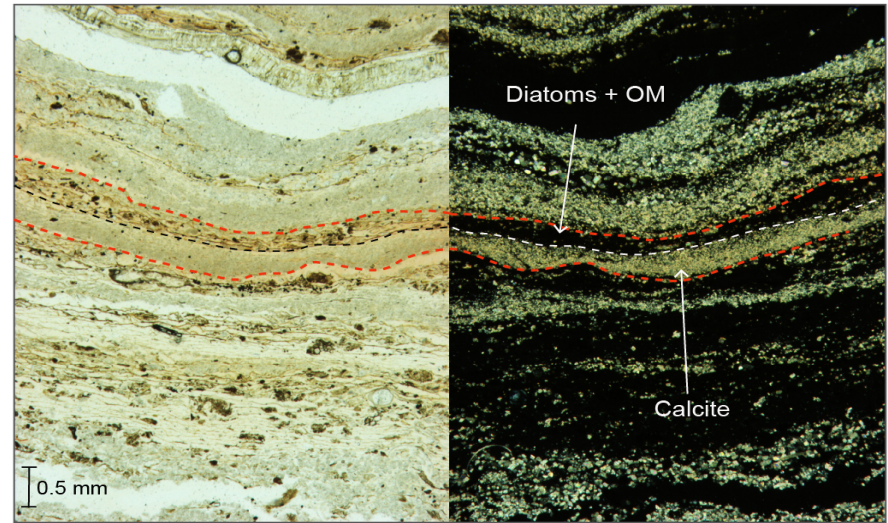
one of the rare lakes in the UK that preserved varves during the Holocene.

(Peglar et al., 1989, Fritz et al., 1989, Peglar, 1993)

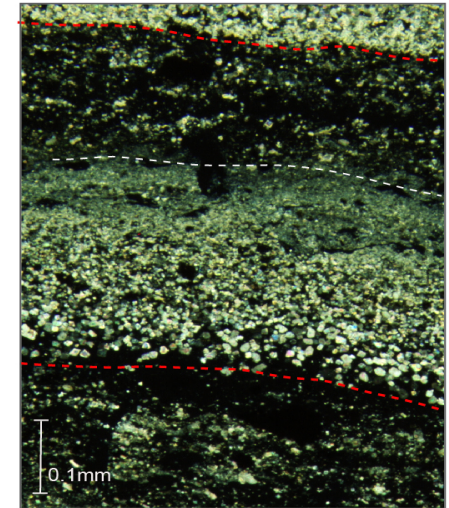




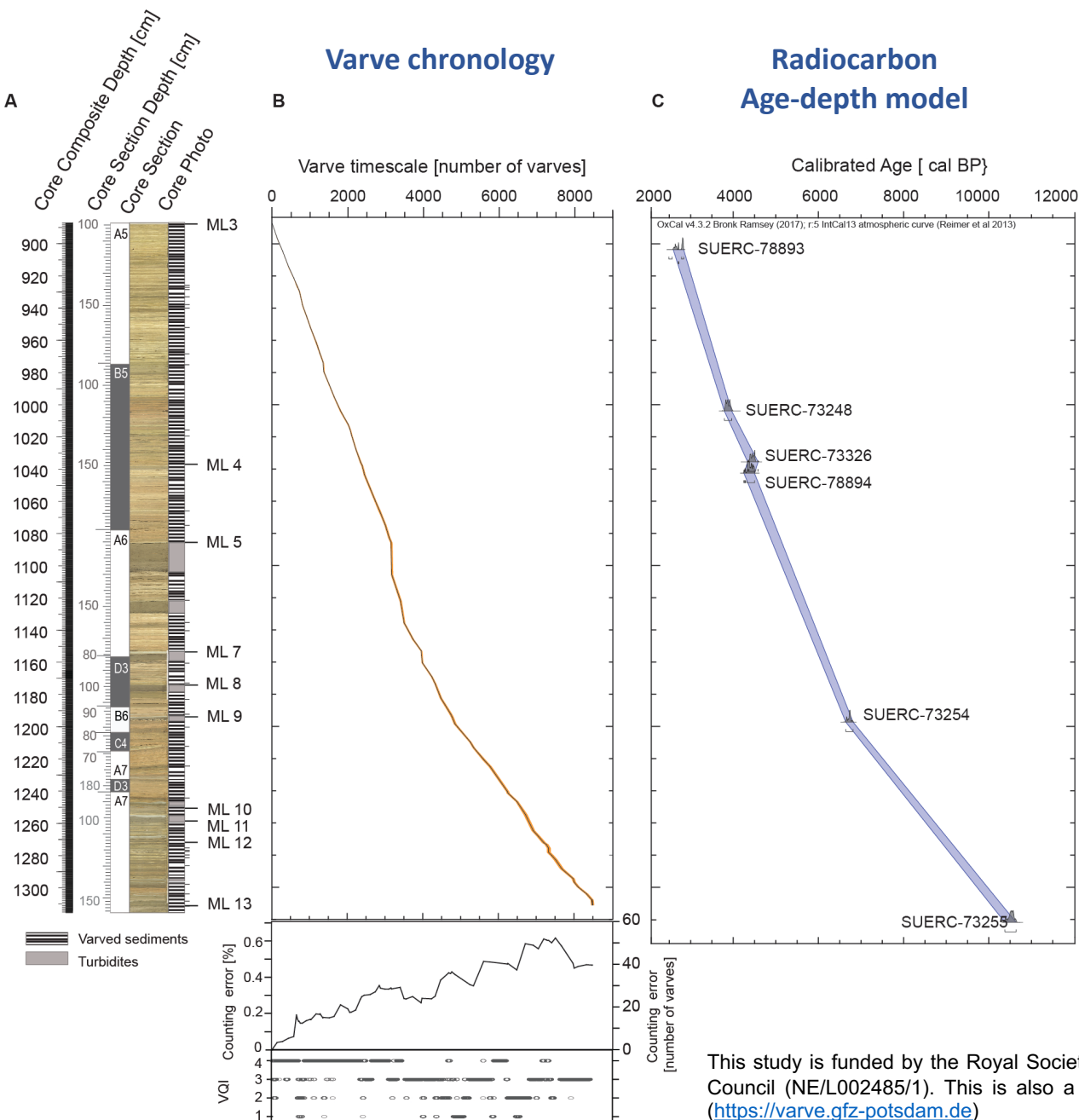
## Composition of varves in Diss Mere



Microscope images of the varved sediments showing the pale (calcite) - dark (diatoms and organic matter) couplet, normal light (left) and polarised light (right). (Microscope image of a varve showing the gradual decrease of the calcite grains within the pale layer.



Up: Bathymetry of Diss Mere and coring sites. Down: Stratigraphic correlation of the Diss Mere cores and sedimentary units. Cores are shown in a NE-SW section through the lake.



## Main results:

- **8473** continuous varves
- Max. counting error: **52** varves
- Time window:  
**2100 – 10,300** cal BP

## INTIMATE implications:

- **First** varve chronology in the **UK**
- **Decadal** age uncertainties
- **Comparison** to other annually-resolved Holocene records on **absolute timescales**

This study is funded by the Royal Society (ref: DH150185) and the Natural Environment Research Council (NE/L002485/1). This is also a contribution to the Varved Sediments Database, VARDA (<https://varve.gfz-potsdam.de>)