



FRIEDRICH-SCHILLER-
UNIVERSITÄT
JENA

Structural relief across the NW segment of the Zagros Mountain Front Flexure in the Kurdistan Region of Iraq: implications for basement thrusting

Mjahid Zebari

Christoph Grützner, Philipp Balling, Kamil Ustaszewski

Friedrich Schiller University Jena

@ Sharing Geoscience Online

© 2020 M. Zebari



Jena Structural Geology - Tectonics



Deutscher Akademischer Austauschdienst
German Academic Exchange Service



زانكۆی سه‌لاحه‌دین-هه‌ولێر
Salahaddin University-Erbil



Institut für Geowissenschaften
Friedrich-Schiller-Universität Jena



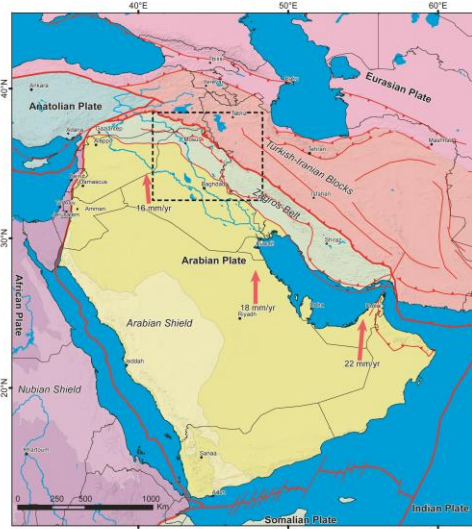
Deutsche
Forschungsgemeinschaft
German Research Foundation



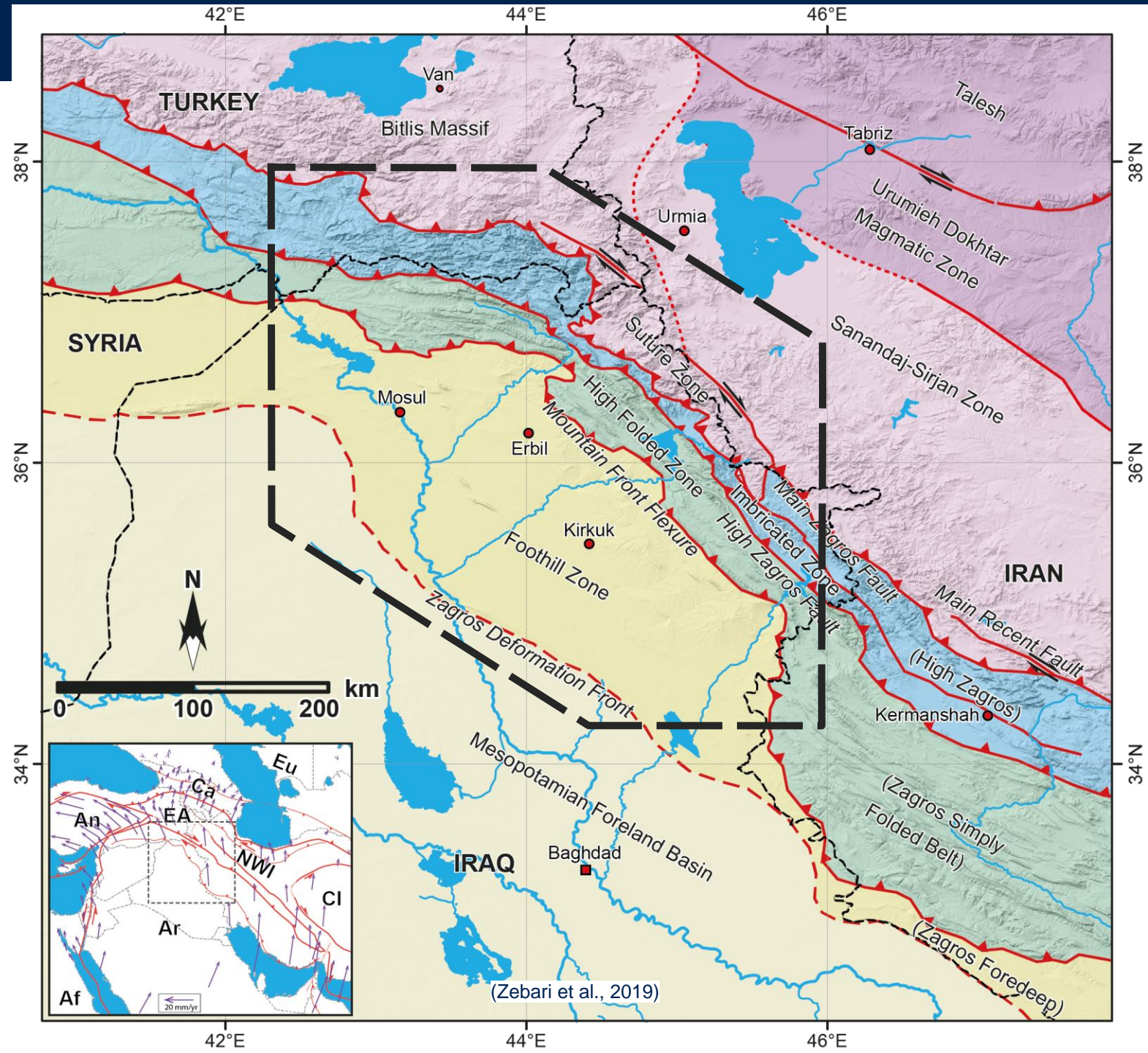
<https://doi.org/10.5194/egusphere-egu2020-18993>

Introduction

- Zagros Fold-Thrust Belt
- It is resulted from the closure of the Neotethys and the subsequent continent-continent collision between the Arabian and Eurasian plates in the Cenozoic
- It consist of several NW-SE belt parallel morphotectonic zones separated by major faults.

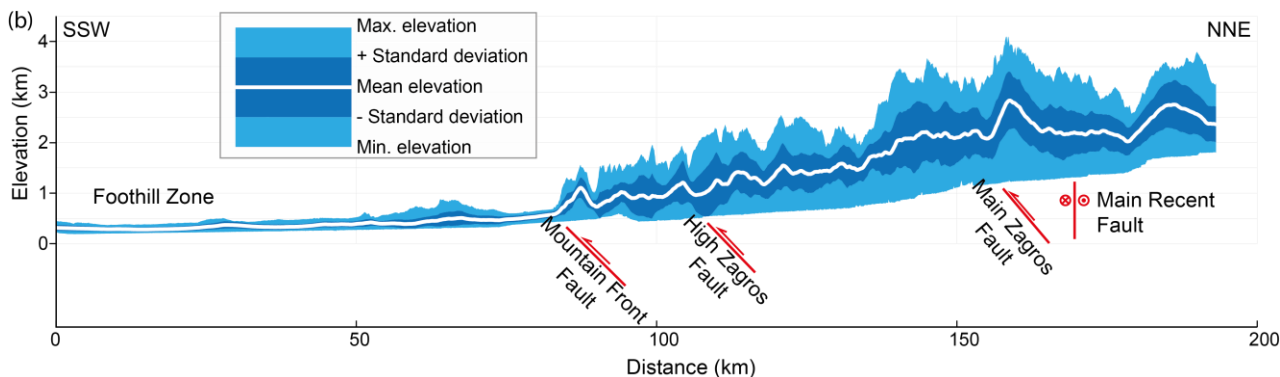


(modified after de Lamotte and Leturmy, 2013)

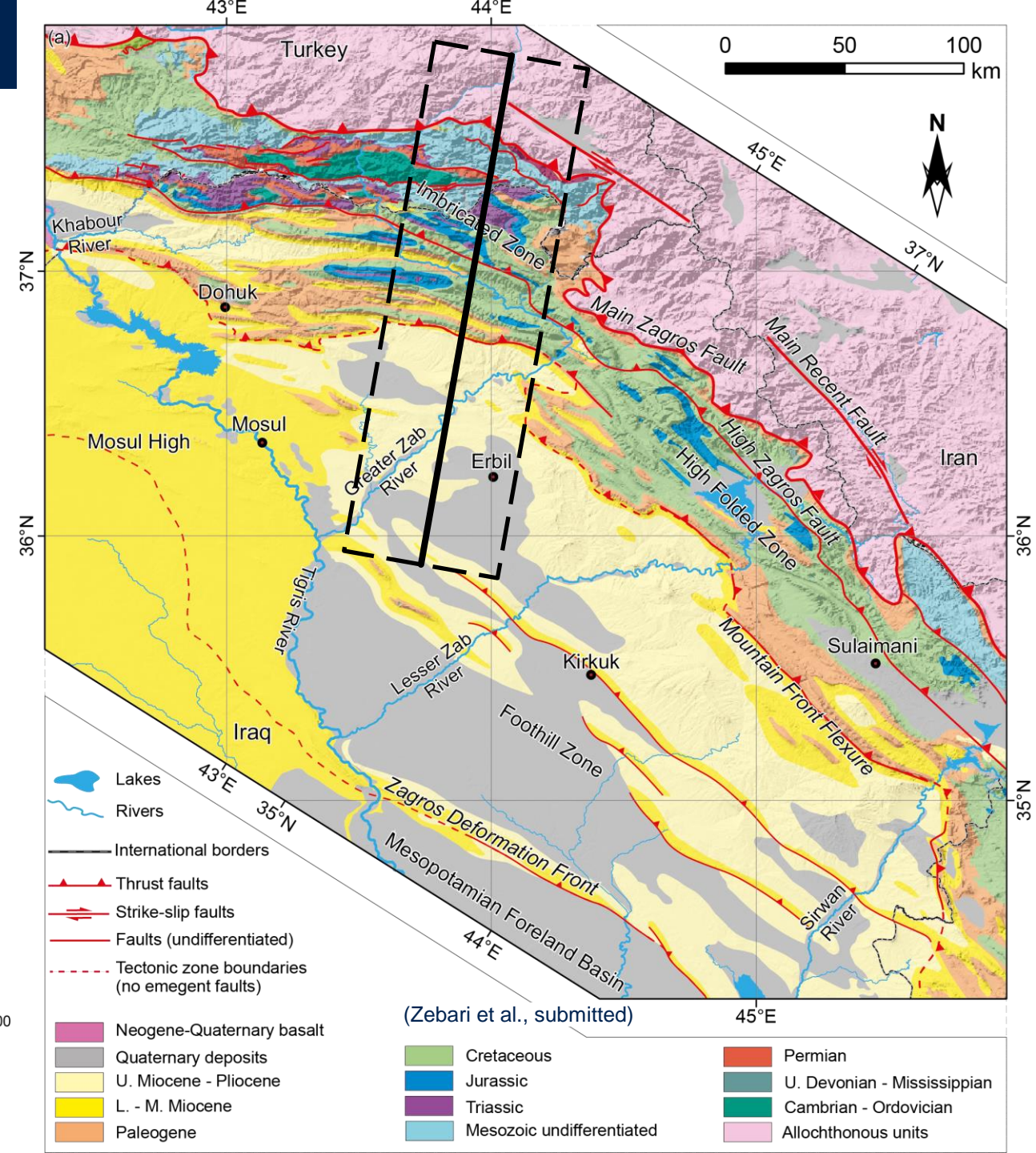


Introduction

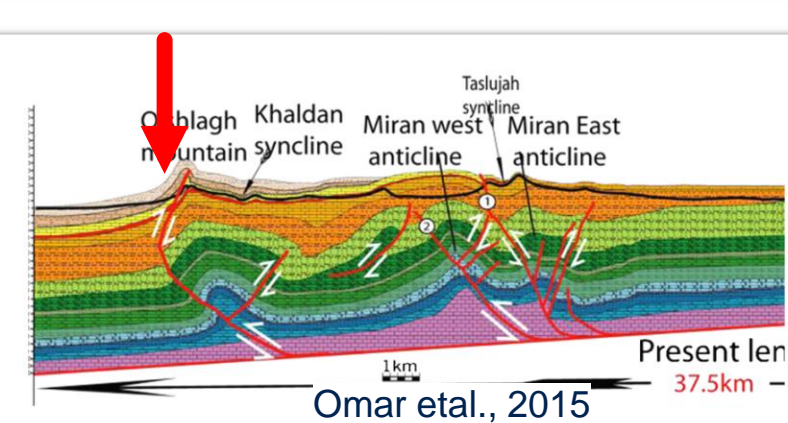
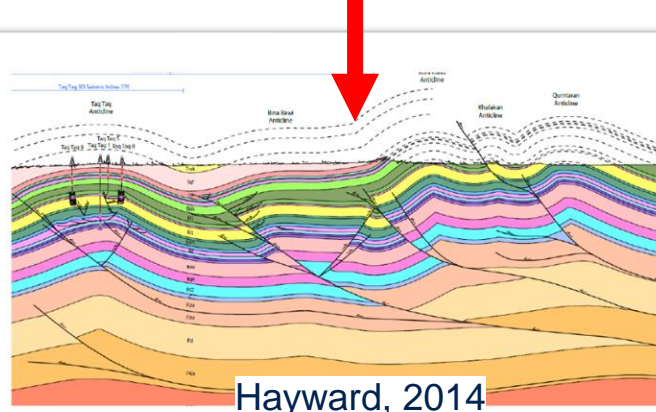
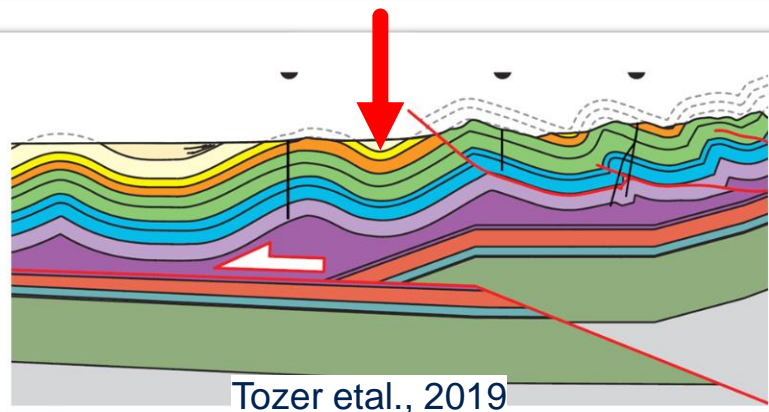
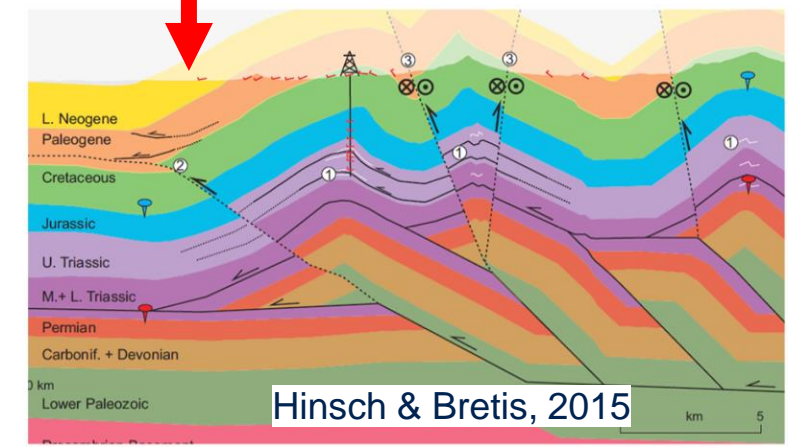
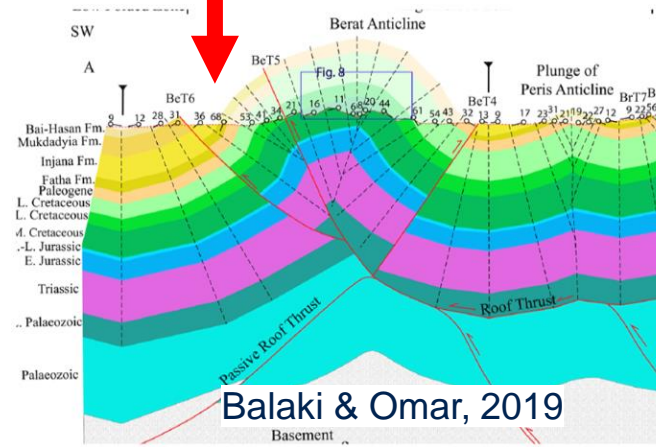
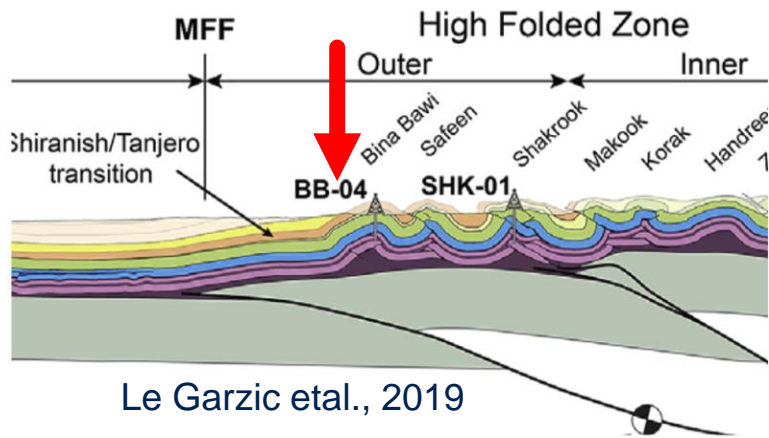
- Zagros Fold-Thrust Belt
- One of these boundaries is the Zagros Mountain Front Flexure or Fault (MFF).
- It separates folds of high amplitude and short wavelength of the High Folded Zone from the widely spaced low amplitude folds of the Foothill Zone.
- The structural style of the MFF at depth is not well constrained yet.



(Zebari et al., submitted)



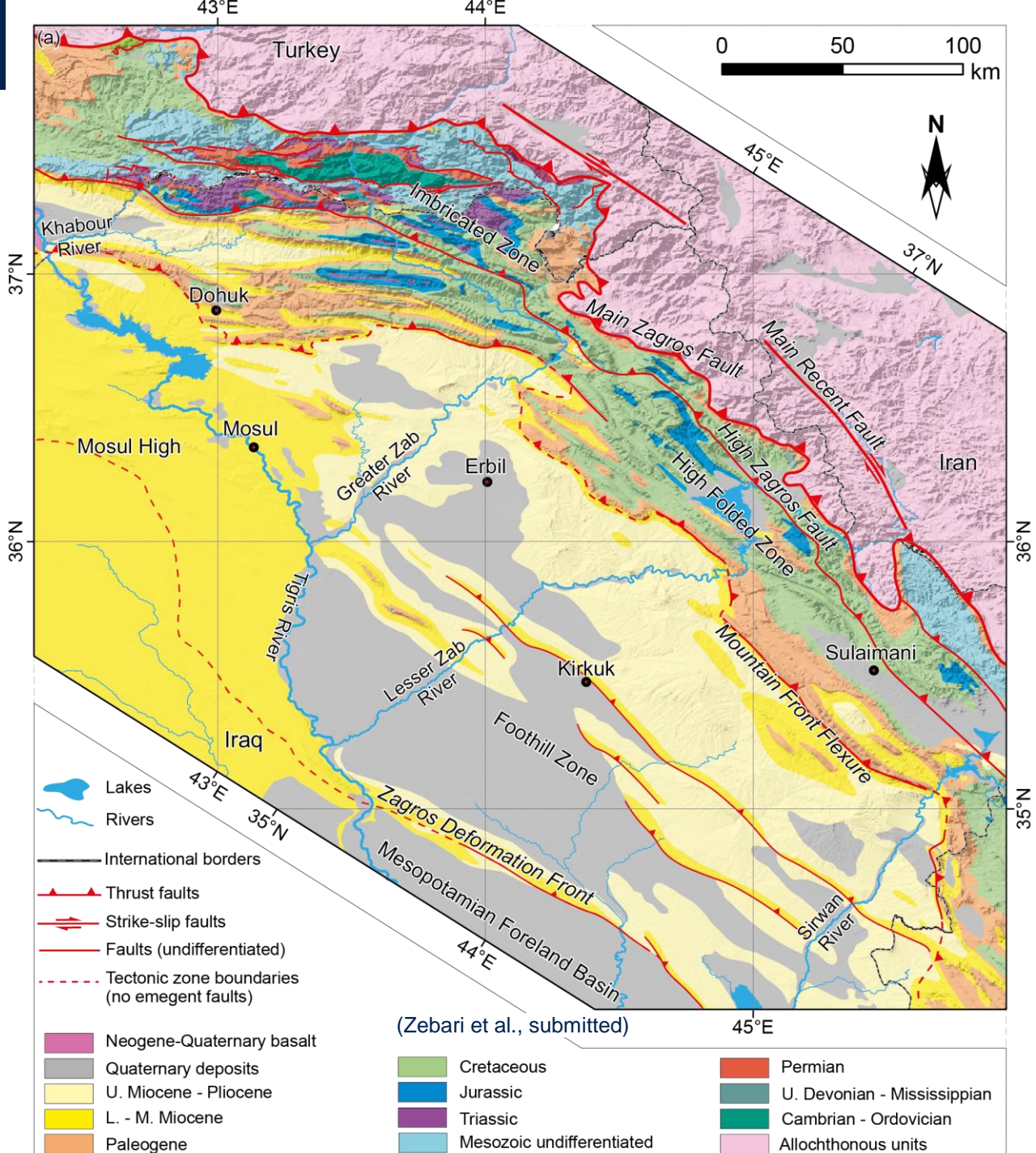
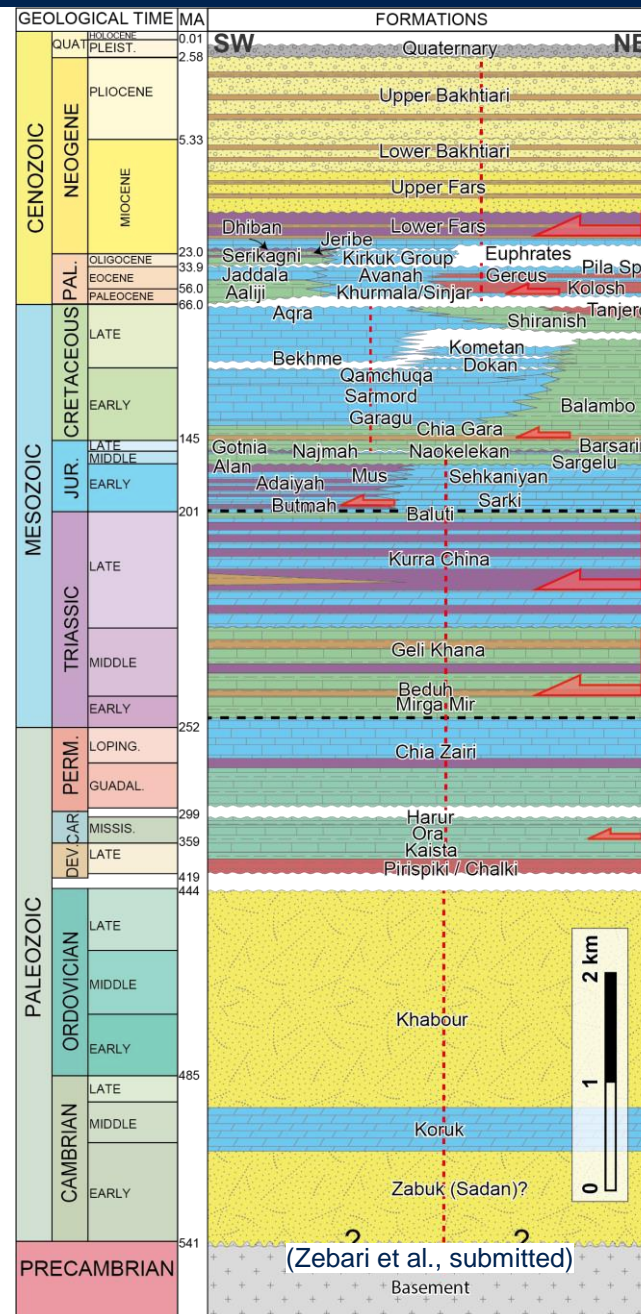
Mountain Front Flexure



- Several models for the deformation style of the MFF at depth have been proposed.
- This work aims to: i) estimate the structural relief (step) across the MFF in several transects, and
ii) reconstruct the geometry of the MFF using balanced cross-sections and forward modeling.

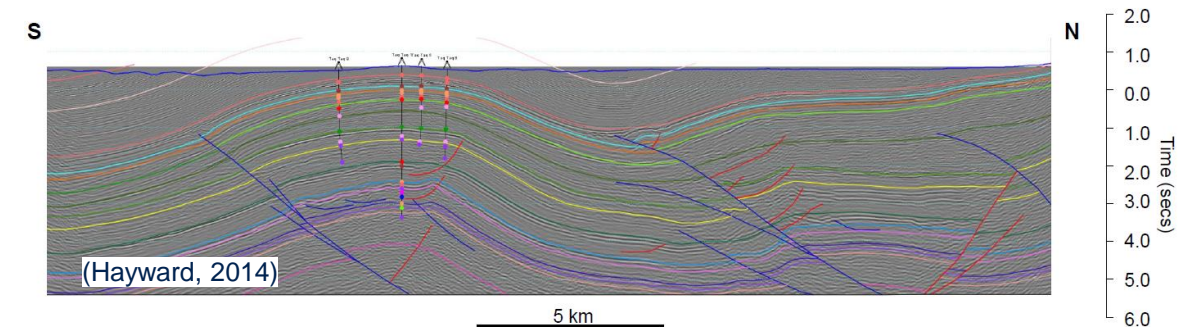
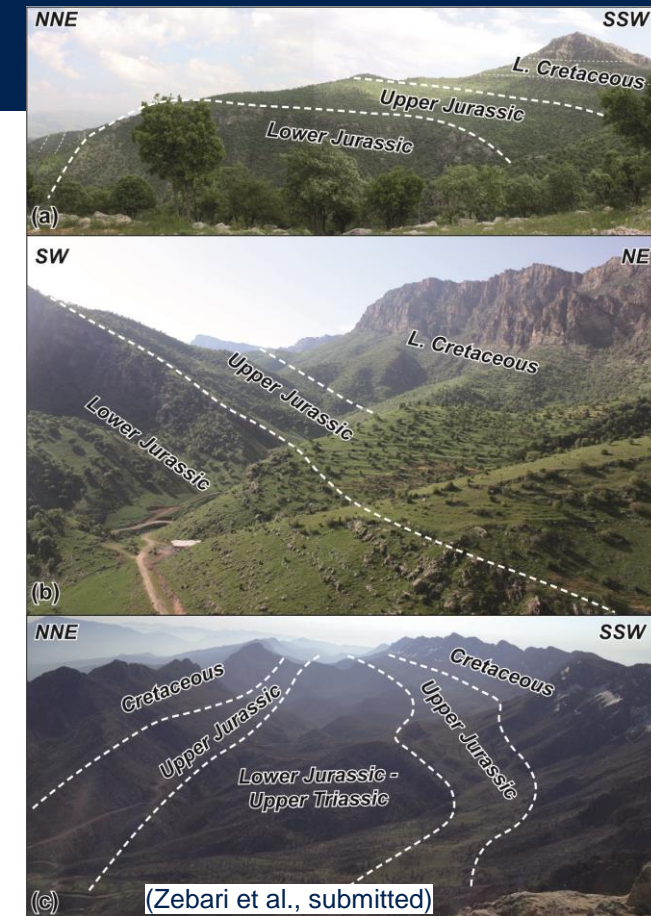
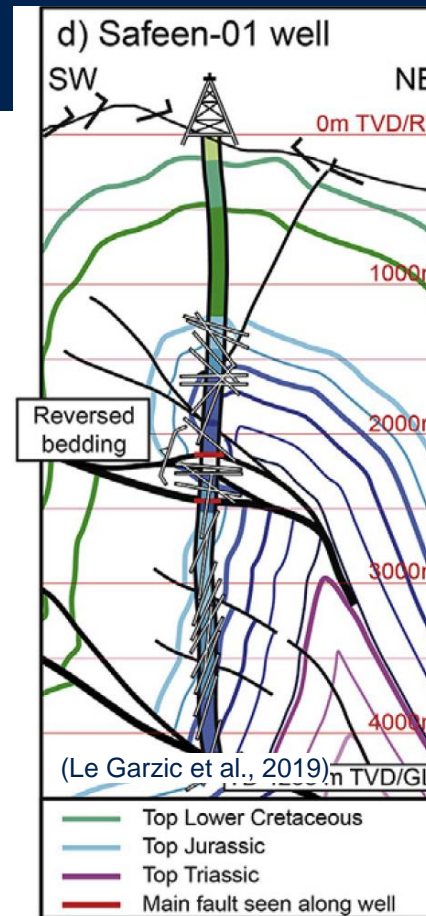
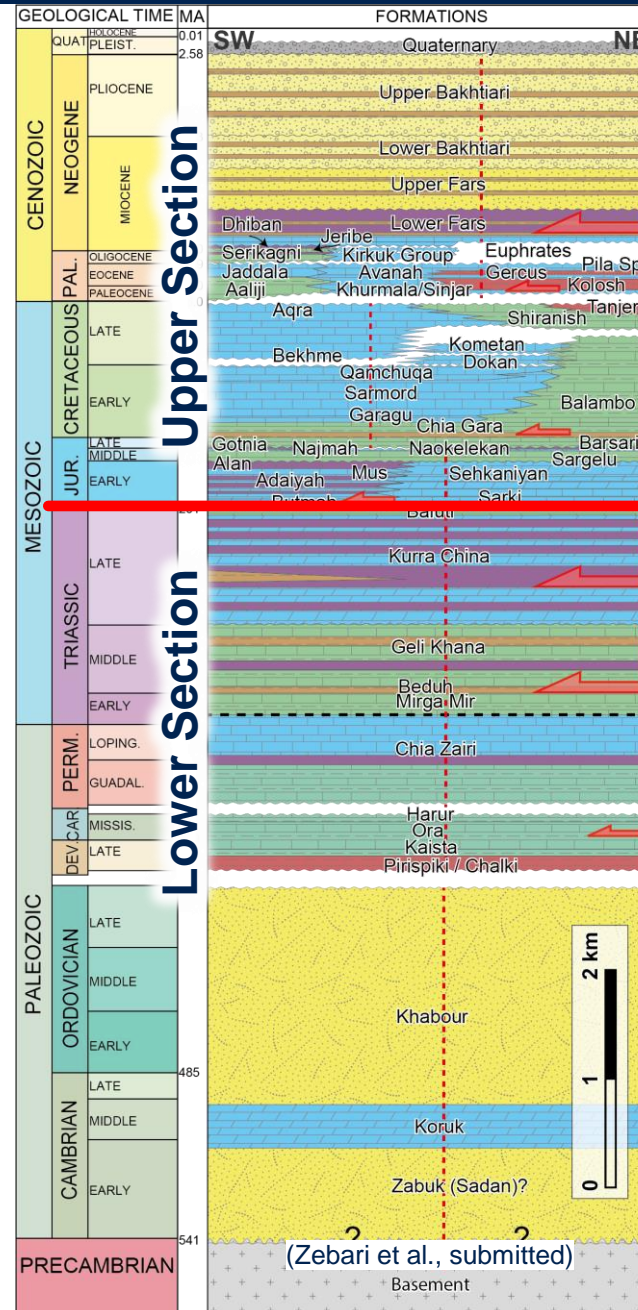
Geological Column

- Sedimentary cover is 8-12 km thick.
- In the vicinity of the MFF, geological units of the Cretaceous and Jurassic ages crop out.
- Upper Triassic and rarely older units rarely expose at surface.



Deformation

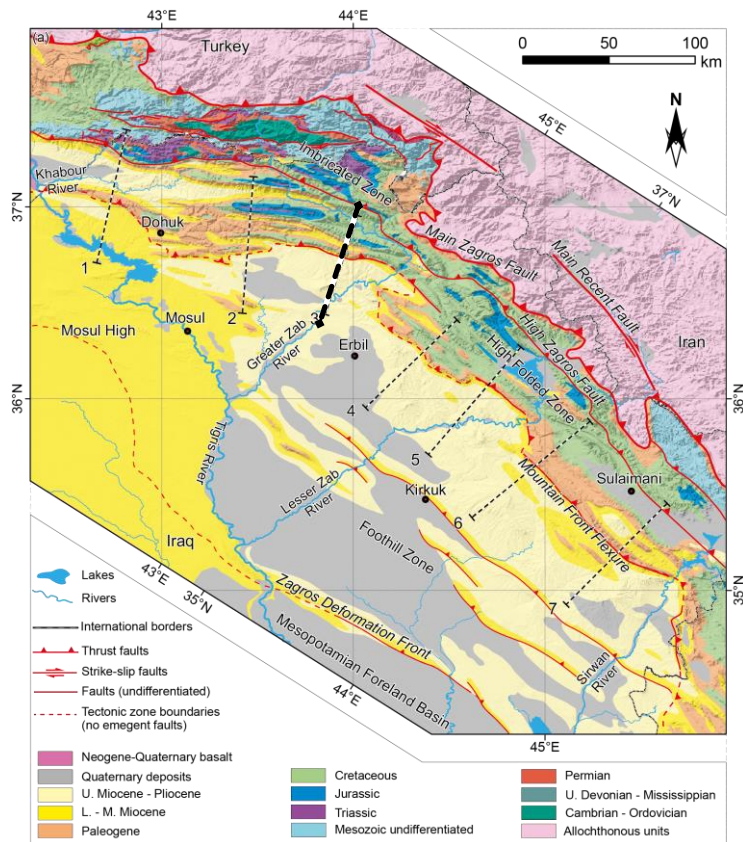
- Sedimentary cover is 8-12 km thick.
- In the vicinity of the MFF, geological units of the Cretaceous and Jurassic ages crop out.
- Upper Triassic and older units rarely expose at surface.
- Field observation and seismic data shows parallel folding with maintenance of bed thickness down to the upper Triassic horizon.
- There is no dominant detachment within the Jurassic & Cretaceous succession.



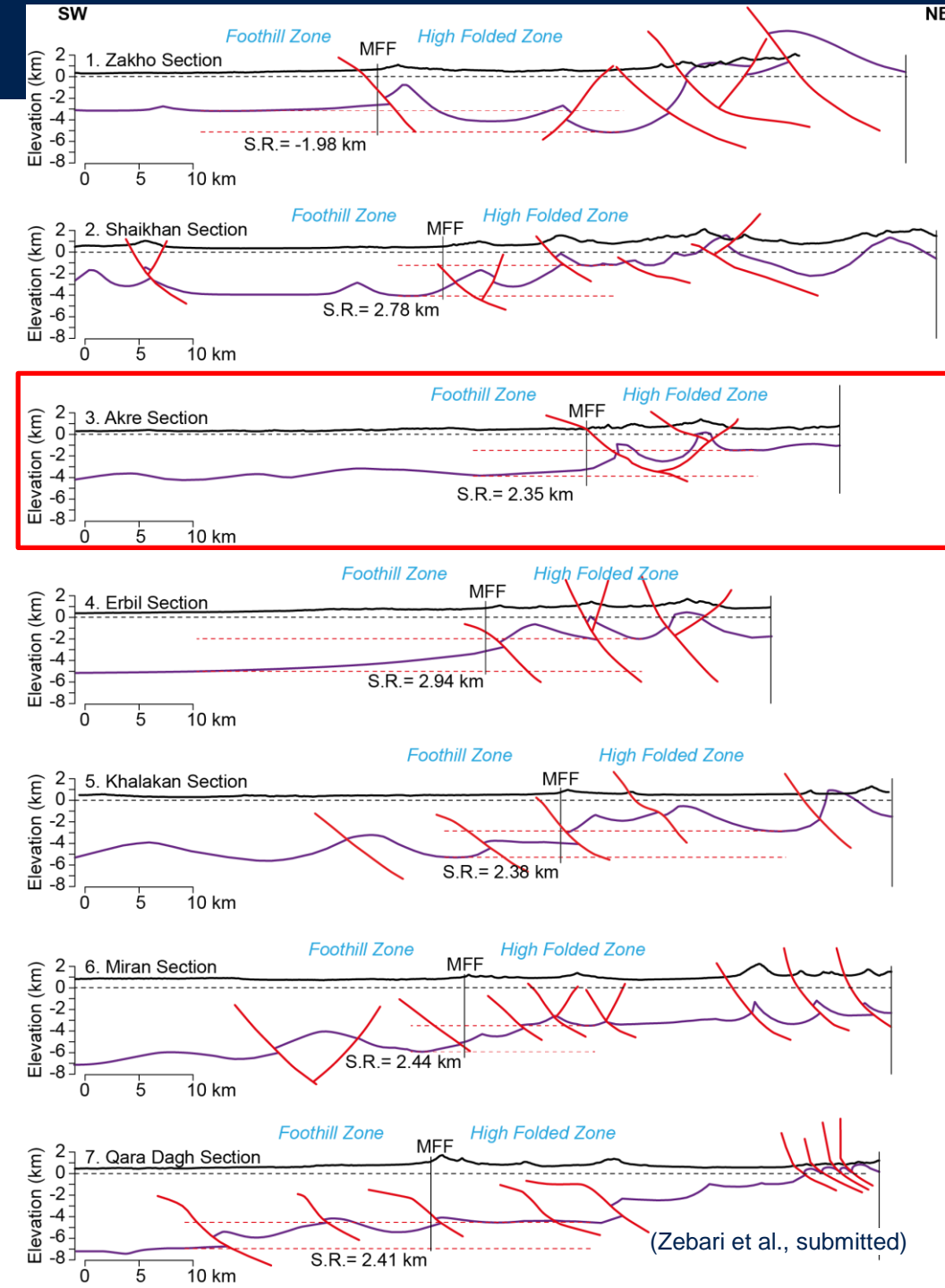
(modified after de Lamotte and Leturmy, 2013)

Structural Relief

- The structural relief across the MFF is calculated for Upper Triassic horizon along several transects crossing the belt.
- The relief is in between 2 and 3 km and 2.55 km as average.
- This makes an angle of more than 6° toward the foreland.



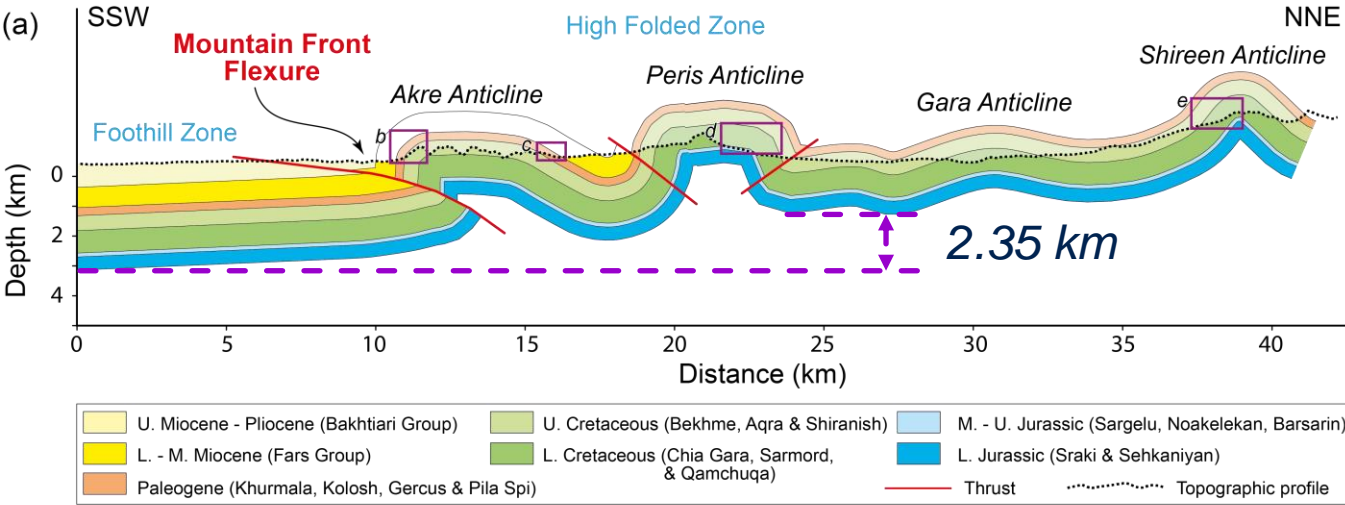
(Zebari et al., submitted)



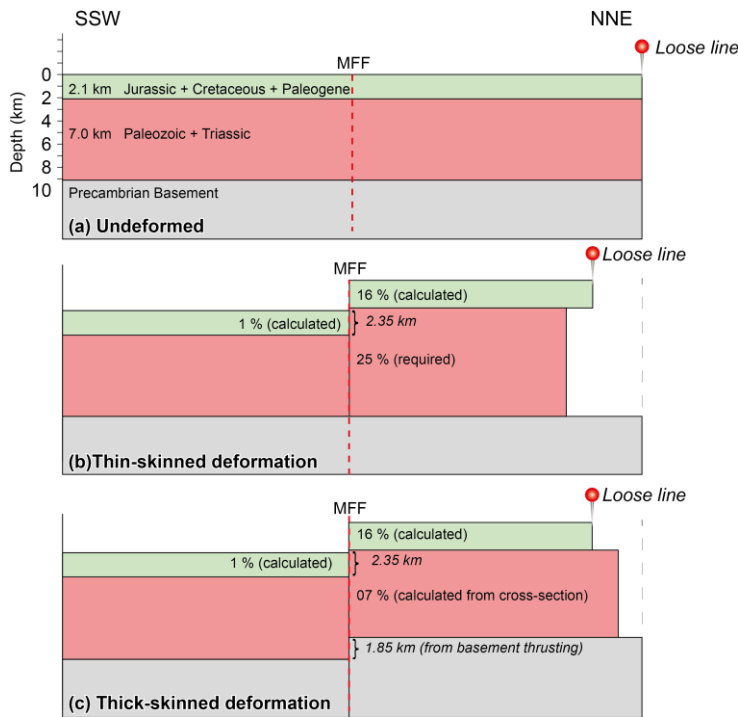
(Zebari et al., submitted)

Cross-Section

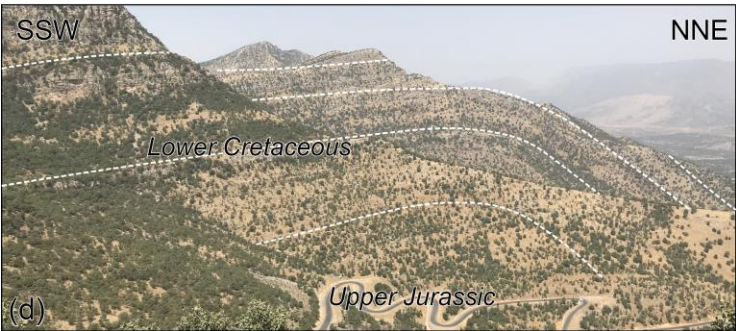
- The structural style for the upper section in the Akre transect is well constrained from the field data and the structural step across the MFF is 2.35 km.
- Theoretically this step can be formed by both thin-skinned model and combination of both thin- and thick-skinned model, with different consequences (requirement) for the lower section.
- While the latest model is more acceptable, and is validated by balanced cross-sections and forward modeling.



(Zebari et al., submitted)



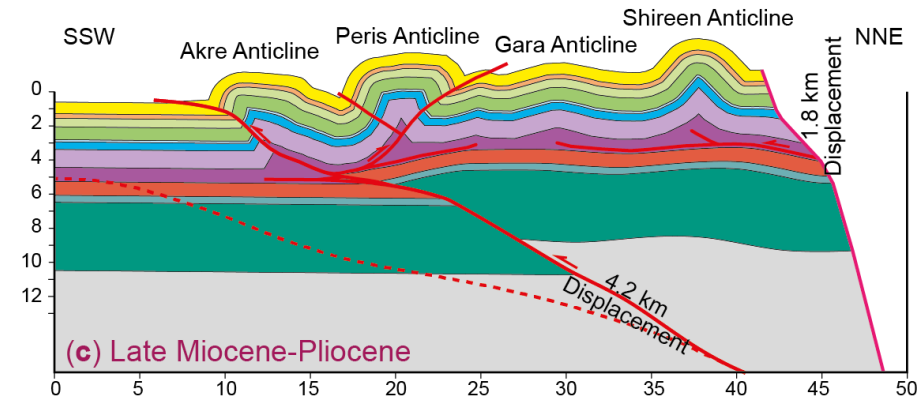
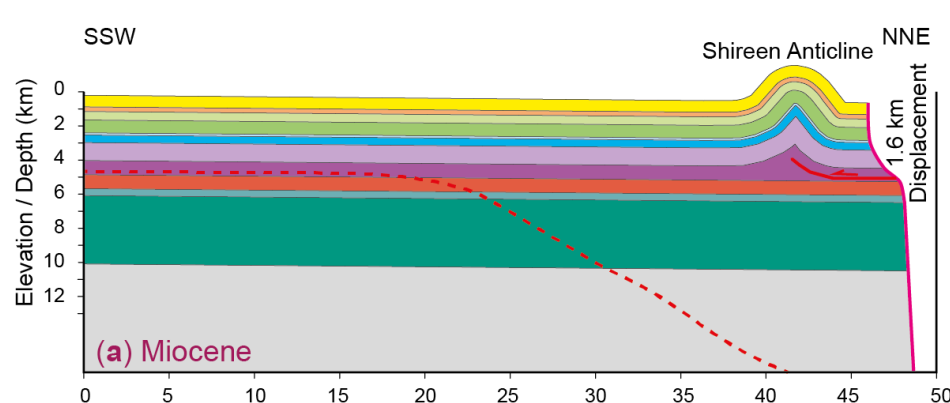
(Zebari et al., submitted)



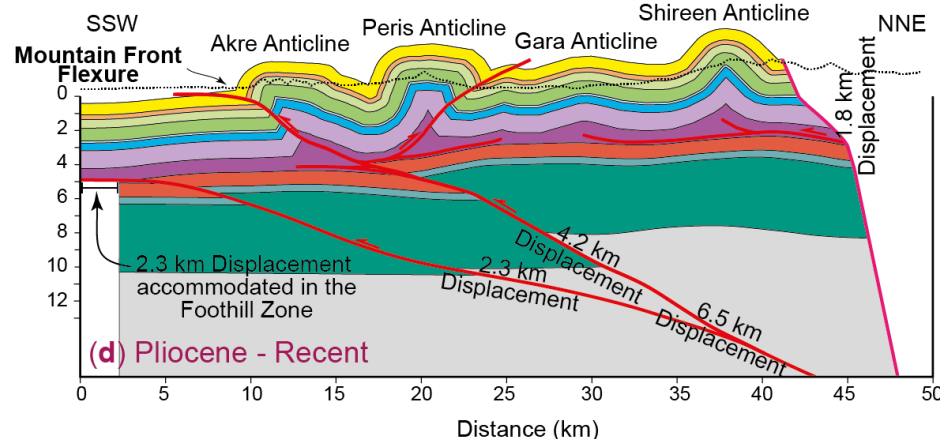
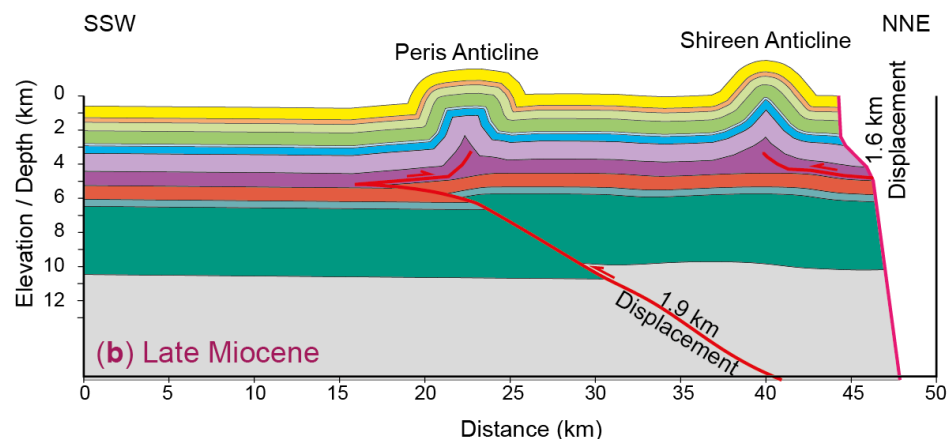
Forward Modeling

- Iterative kinematic forward modeling along the Akre transects suggests that a multi-stage evolution involving both:
 - Thin-skinned deformation by early detachment folds in the Mesozoic to Neogene succession above the Triassic detachment, and,
 - Thick-skinned deformation overprinted by a NE-dipping basement-rooted thrust system with a cumulative displacement of 6.5 km.

Age	Formations	Lithology
Triassic	Baluti	
	KCA Anhydrite	A
	Marker Dolomite	
	B1	
	B2	
	B3	
	B4	
	B5	
	Kurra China	B
	KCC Anhydrite	
Middle	KCC Carbonate	C
Lower	Geli Khana	M
	Beduh	L
	Mirga Mir	

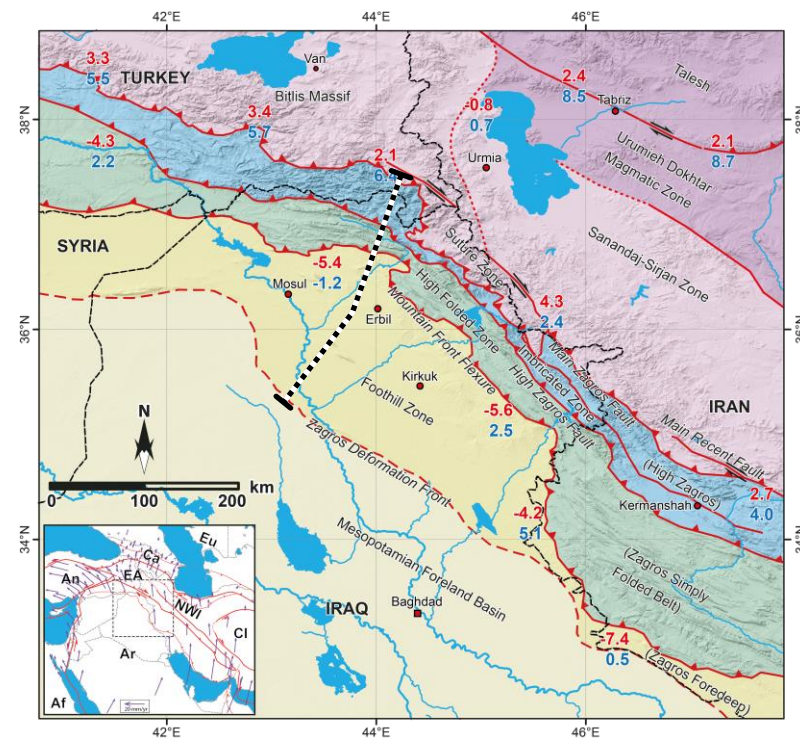
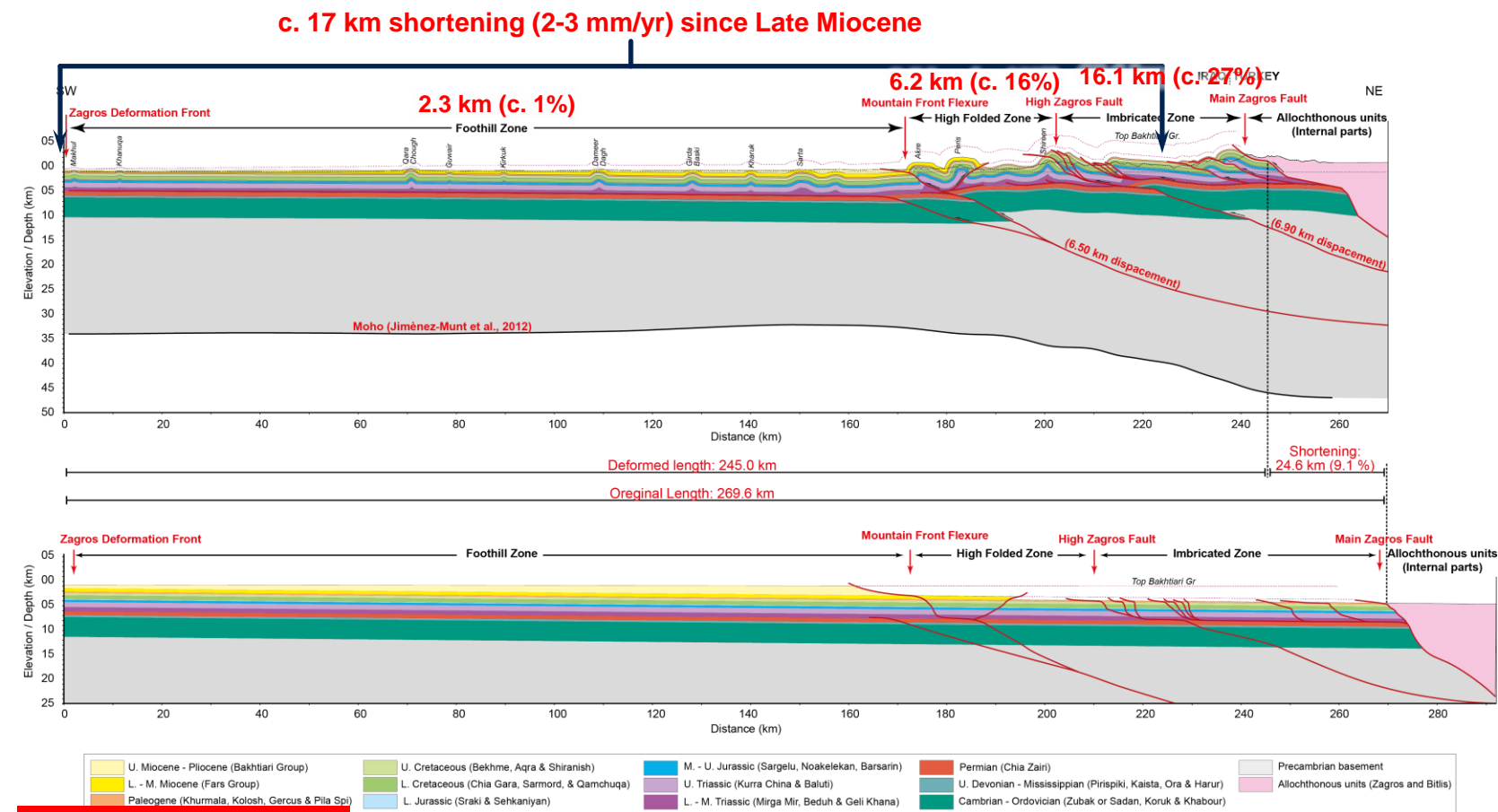


(Zebari et al., submitted)



Regional Cross-Section

- A regional balanced cross-section shows that the minimum horizontal shortening of the sedimentary cover is about 24.6 km (9.1 %) for this part of belt.
- The calculated shortening for the topographically low part of the belt is about 17 km at rates of 2-3 mm/yr since the deformation has reached there in Late Miocene. These shortening rates are much lower than geodetically derived present-day convergence rates (5.4 mm/yr).



Fault slip rates (block model)

- Red:** Fault normal component (positive = extension)
- Blue:** Fault parallel component (positive = right-lateral)

Fault slip rates are from (Khorrami et al., 2019)

Conclusions

- **The structural relief for the Upper Triassic horizon across the Zagros Mountain Front Flexure is 2-3 km on average.**
- **A balanced cross-section requires 6.5 km reverse displacement on a listric NE-dipping basement thrust.**
- **The shortening rates during Late Miocene-Quaternary in the topographically part of the Zagros were much lower than geodetically derived present-day convergence rates.**

Cited References:

- **Balaki**, H.G.K., Omar, A.A., 2019. Structural assessment of the Bradost and Berat structures in Imbricate and High Folded zones—Iraqi Kurdistan Zagros belt. *Arabian Journal of Geosciences* 12, 1–21.
- **Frizon de Lamotte**, D., Leturmy, P., 2014. The structural map of the Arabian Plate and surrounding areas. *Episodes*, 37 , pp. 111-114.
- **Hayward**, T., 2014. The Opening of the Kurdistan Oil and Gas Province: The Making of a Nation. Search and Discovery Article #110204 (2014), AAPG International Conference and Exhibition.
- **Hinsch**, R., Bretis, B., 2015. A semi-balanced section in the northwestern Zagros region: Constraining the structural architecture of the Mountain Front Flexure in the Kirkuk Embayment, Iraq. *GeoArabia* 20, 41–62.
- **Khorrami**, F., Vernant, P., Masson, F., Nilfouroushan, F., Mousavi, Z., Nankali, H., Saadat, S.A., Walpersdorf, A., Hosseini, S., Tavakoli, P., Aghamohammadi, A., Alijanzade, M., 2019. An up-to-date crustal deformation map of Iran using integrated campaign-mode and permanent GPS velocities. *Geophysical Journal International* 217, 832–843.
- **Lunn**, G.A., Miller, S., Samarrai, A., 2019. DATING AND CORRELATION OF THE BALUTI FORMATION, KURDISTAN, IRAQ: Implications for the regional recognition of a Carnian “marker dolomite”, and a review of the Triassic to Early Jurassic sequence stratigraphy of the Arabian Plate. *Journal of Petroleum Geology* 42, 5–36.
- **Omar**, A.A., Lawa, F.A., Sulaiman, S.H., 2015. Tectonostratigraphic and structural imprints from balanced sections across the north-western Zagros fold-thrust belt, Kurdistan region, NE Iraq. *Arabian Journal of Geosciences* 8, 8107–8129.
- **Tozer**, R.S.J., Hertle, M., Petersen, H.I., Zinck-Jørgensen, K., 2019. Quantifying vertical movements in fold and thrust belts: subsidence, uplift and erosion in Kurdistan, northern Iraq. *Geological Society, London, Special Publications* SP490-2019–118.
- **Zebari**, M., Grützner, C., Navabpour, P., and Ustaszewski, K., 2019. Relative timing of uplift along the Zagros Mountain Front Flexure (Kurdistan Region of Iraq): Constrained by geomorphic indices and landscape evolution modeling, *Solid Earth*, 10, 663–682.
- **Zebari**, M., Balling, P., Grützner, C., Navabpour, P., Witte, J., and Ustaszewski, K.. Structural style of the NW Zagros Mountains and the role of basement thrusting for its Mountain Front Flexure, Kurdistan Region of Iraq. Submitted to the *Journal of Structural Geology*.



FRIEDRICH-SCHILLER-
UNIVERSITÄT
JENA

Thank You



@ Sharing Geoscience Online