

The recent AMOC variability in the Subpolar Gyre: results across the OVIDE section

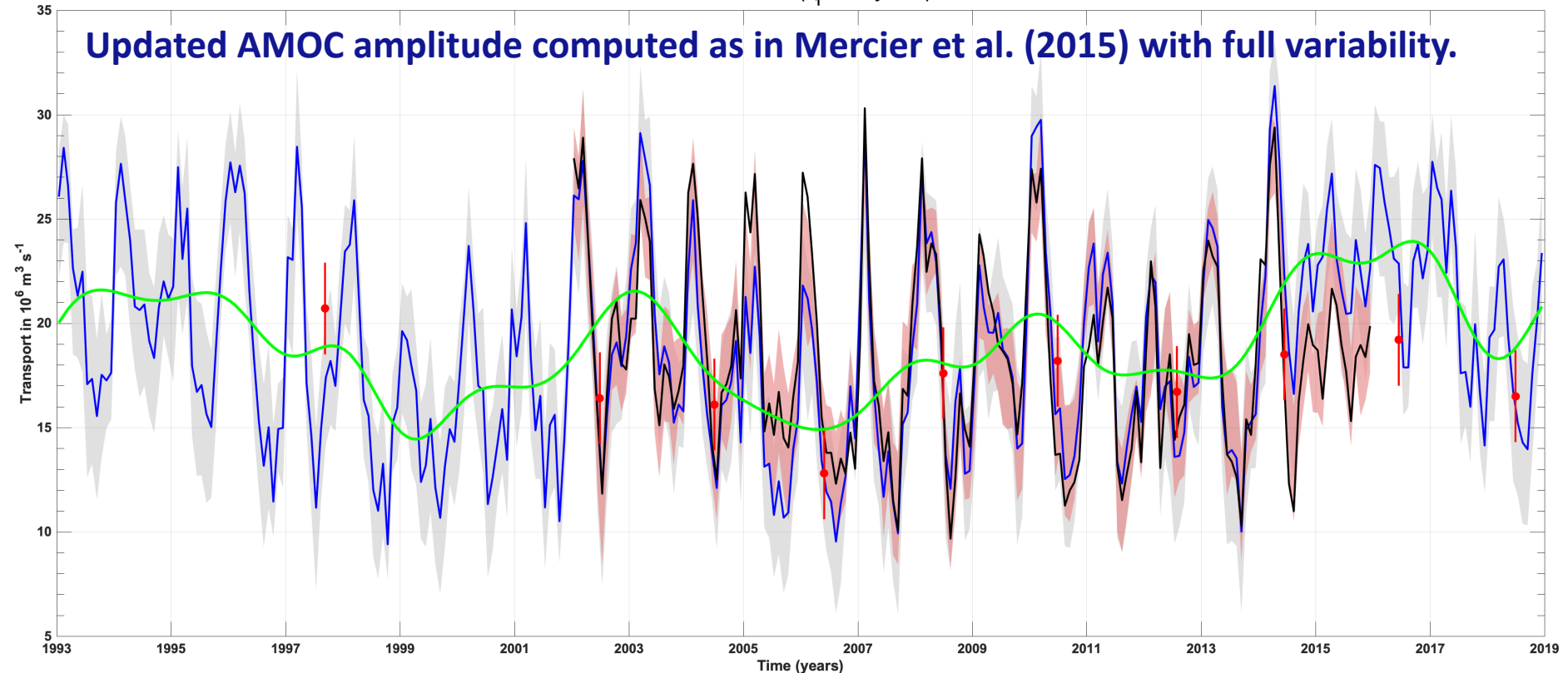
Pascale Lherminier, Herlé Mercier, Fiz F. Perez, and Marcos Fontela

Ifremer, CNRS, CSIC

AMOC variability across the OVIDE section

AMOC time series (σ_1 monthly fields)

Updated AMOC amplitude computed as in Mercier et al. (2015) with full variability.



In black: monthly hydrographic fields (ISAS) + monthly surface geostrophic currents (AVISO) ;
the associated error in pale red

In blue: monthly hydrographic climatology (ISAS) + monthly surface geostrophic currents (AVISO) ;
the associated error in grey

In green: the blue line with a 2-year low-pass-filter.

In red: the AMOC computed independently from in-situ data at OVIDE surveys (hydrography + SADCp)