

A regional assessment of land-based carbon mitigation options: Bioenergy, reforestation, forest management

Reiss M, Krause A, Rammig A

Professorship for [Land Surface-Atmosphere Interactions](#)



[@LSAI_TUM](#)

Technical University of Munich, TUM School of Life Sciences Weihenstephan, Freising, Germany

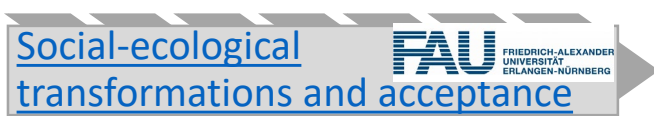
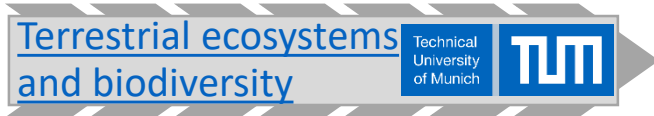




BLIZ – Interactions between society, land use and biodiversity in Bavaria until 2100 – a **bayklif** project



[@blizproject](https://twitter.com/blizproject)



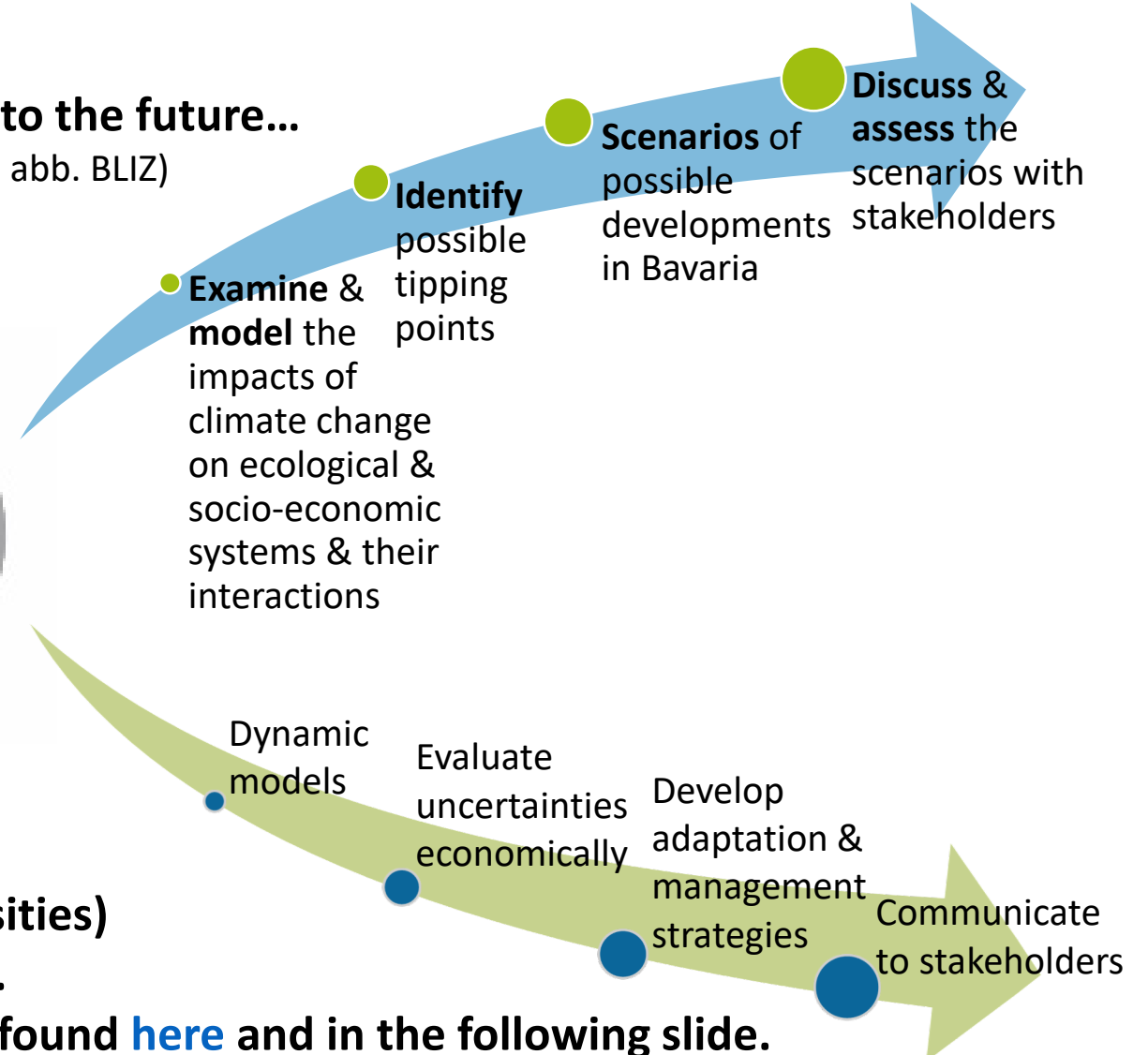
We take a glance into the future...

(ger: Blick in die Zukunft, abb. BLIZ)



The collaborative research project (6 groups, 4 universities) has started in 2018.

First results can be found [here](#) and in the following slide.



A regional assessment of land-based carbon mitigation potentials: Bioenergy, BECCS, reforestation, and forest management

Andreas Krause , Thomas Knoke, Anja Rammig

First published: 07 February 2020 | <https://doi.org/10.1111/gcbb.12675>

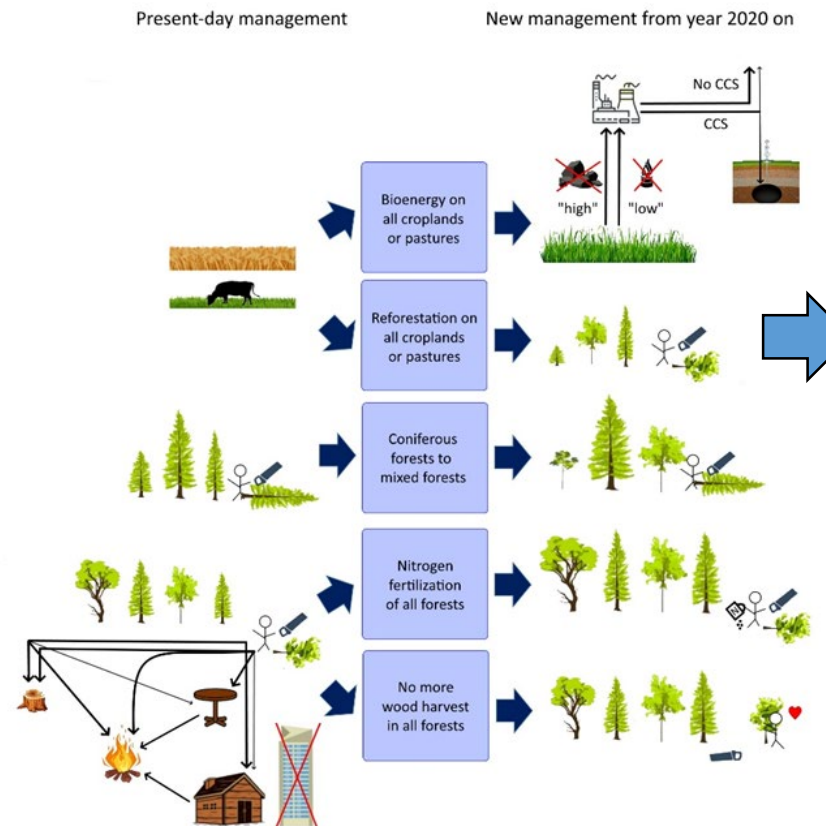


[@AndyKrause8](#)

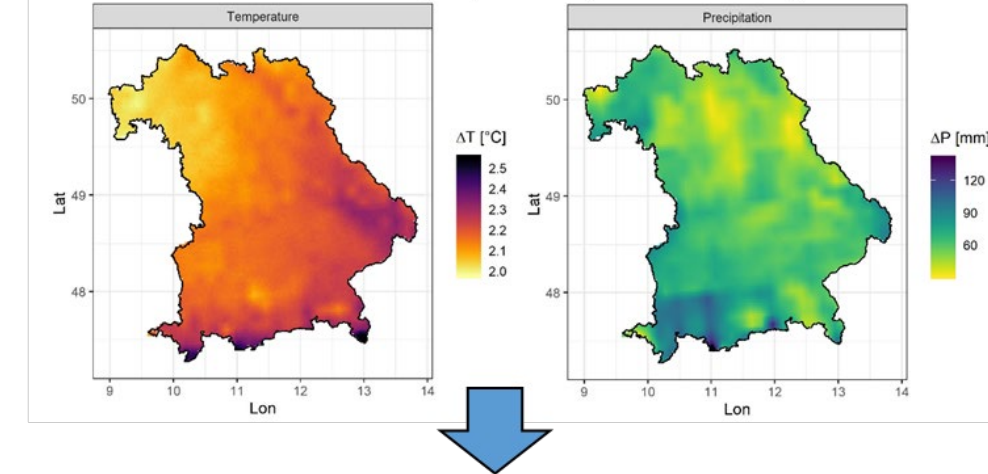
[@anjarammig](#)

Do you want to have a closer look at the study?
Read it [here](#)

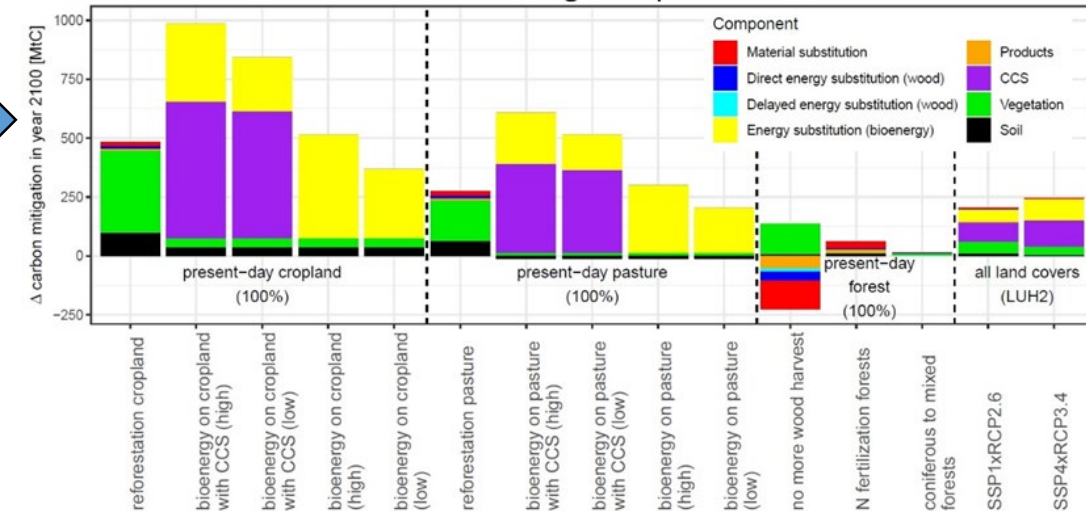
Land-use scenarios



RCP4.5 climate projections (EURO-CORDEX)



Carbon mitigation potential



Do you want to find out how carbon storage may change under climate and land-use change?
Have a look at our Shiny app [here](#)