

# Assessing geomorphic river sensitivity

by Sana Khan\* & Kirstie Fryirs

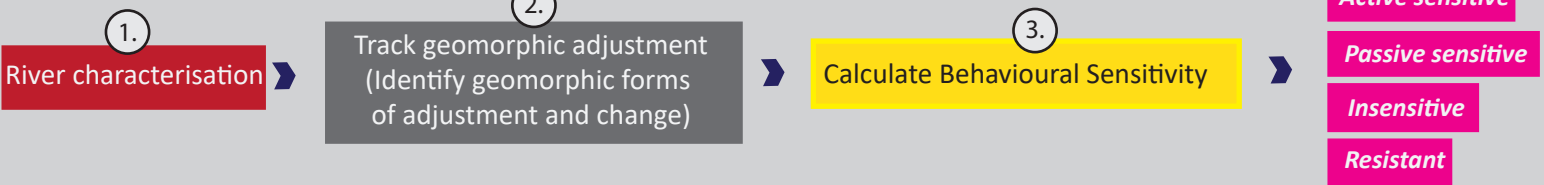


MACQUARIE  
University  
SYDNEY · AUSTRALIA

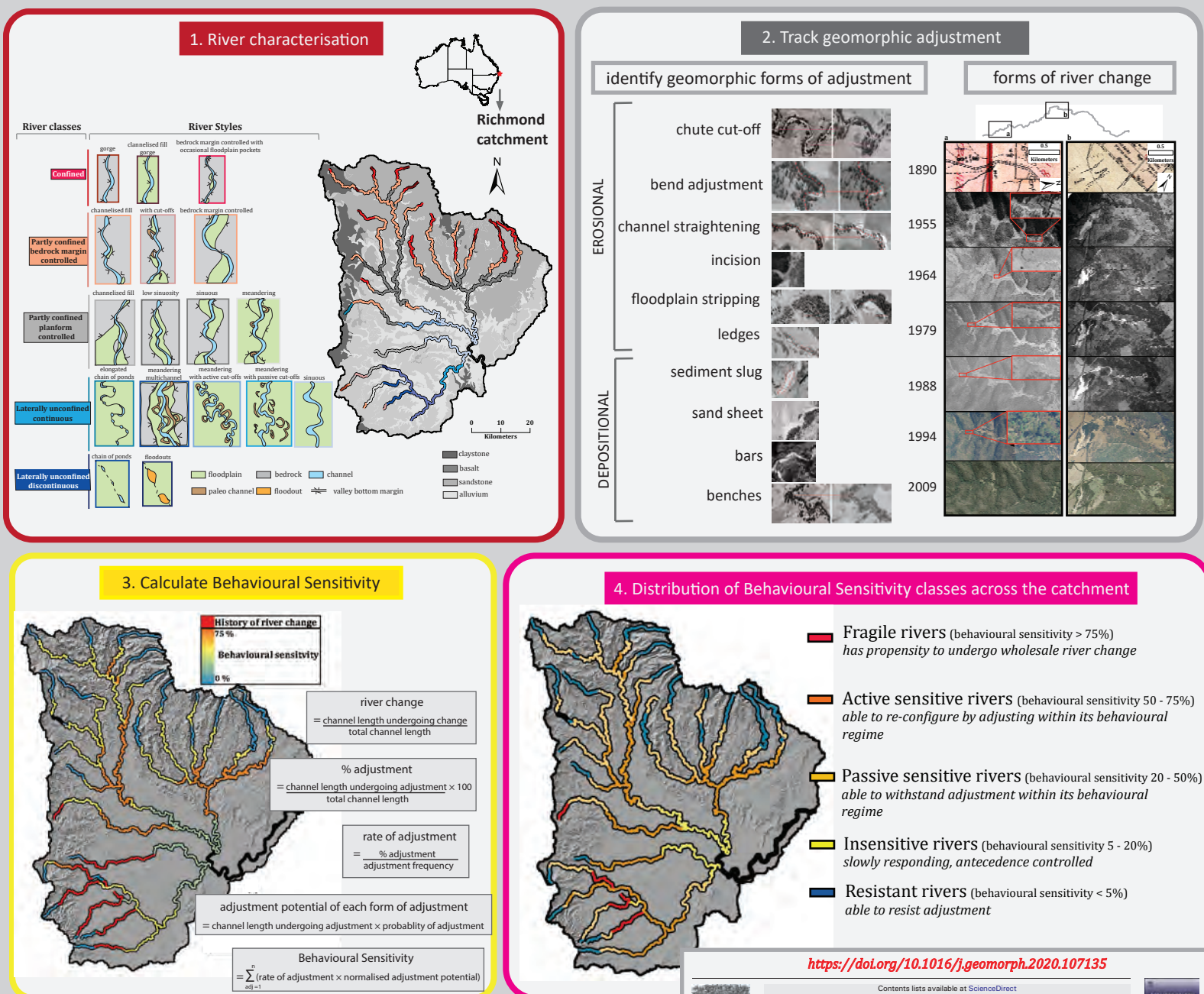


Contemporary river forms and processes can be heavily influenced by the legacies of anthropogenic disturbances to river systems. Knowledge of the historical range of river adjustment can be used to develop an understanding of a rivers' 'expected' character and behaviour.

Here we present an approach to assess and quantify reach scale behavioural sensitivity, defined as the ease with which geomorphic units and associated water, sediment and vegetation interactions adjust within the expected behavioural regime.



## Assessing geomorphic river sensitivity in Richmond Catchment, NSW, Australia



Acknowledgements:  
Sana Khan is supported by a Commonwealth Government International Research Training Program (iRTP) scholarship and Macquarie University Higher Degree Research Funds.  
\*sana.khan@hdr.mq.edu.au

For more details