

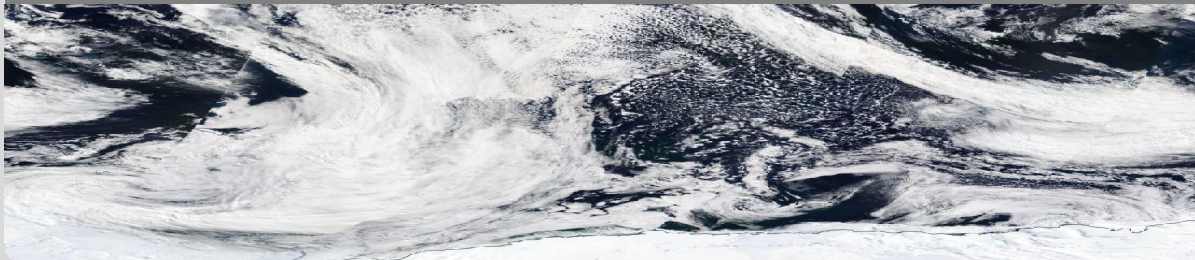


# Cloud Thermodynamic Phase Partitioning Over The Southern Ocean

A Passive Space-Based Instrument Perspective

Quentin Coopman, Corinna Hoose, Martin Stengel | May 4-8, 2020

INSTITUTE OF METEOROLOGY AND CLIMATE RESEARCH — DEPARTMENT TROPOSPHERE RESEARCH

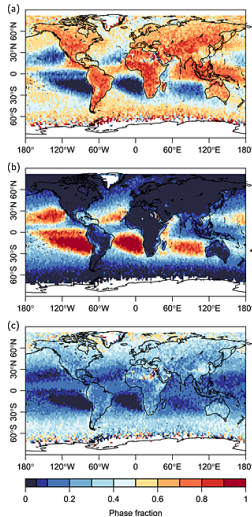


- We analyze the **thermodynamic phase partitioning of mixed phase clouds over the Southern Ocean**
- Evidence of processes showing **larger cloud droplets associated with higher ice fraction**
- Mixed phase clouds with larger cloud droplets are potentially associated with **higher ice crystal concentration**
- Clouds transition from liquid to ice via an **increase of the ice pocket density**

**Note for the reader:** On the outline slide you can choose the parts you are the most interested in, if you want to skip the introduction for example, on the bottom bar, etc. If you have any question or comment, you can contact me via email [quentin.coopman@kit.edu](mailto:quentin.coopman@kit.edu) or via the platform from EGU.

- 1 Introduction
  - Mixed phase clouds in models and observations
- 2 Data & Method
  - Geostationary space-based instrument SEVIRI
  - Mixed phase clouds from SEVIRI
- 3 Results & Discussions
  - Spatial distribution of mixed phase clouds
  - Which parameters do influence the ice fraction?
  - What is the spatial partitioning of ice and liquid pixels when clouds transition from liquid to ice?
- 4 Conclusion & Outlook

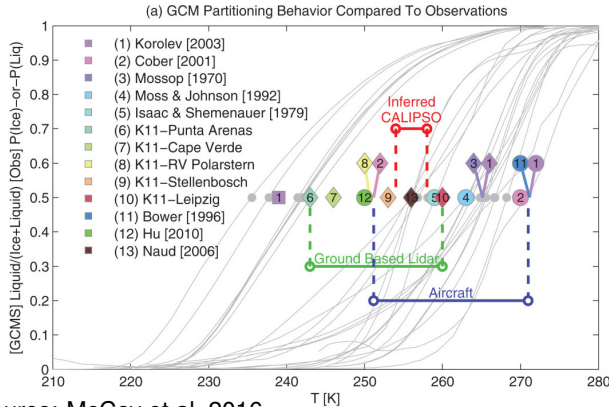
# Phase transition triggers precipitation



- 70% of precipitation is **produced via the ice phase**
- The phase transition has an impact on the net radiative properties of clouds

Source: Mülmenstädt et al. 2015

# Models overestimate the ice content and disagree with each other



Source: McCoy et al. 2016

- The temperature for which the liquid cloud fraction is equal to 50% ( $T_{50}$ ) from different **Global Cloud Models** **vary by 35°C**

# Phase partitioning in mixed phase clouds



## Why is there too much ice in models?

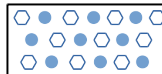
Several hypothesis:

- Too many ice nuclei particles
  - **Ice seeding too efficient**
  - Model resolutions are too coarse and clouds are uniformly mixed
- 
- **Different types of clouds** can be mixed phase (stratus, deep convective. . .)
  - The interaction of mixed phase clouds with aerosols, their radiative and dynamical effects, and their role in cloud electrification **are still undetermined**

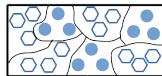
Ice cloud



Mixed-phase clouds



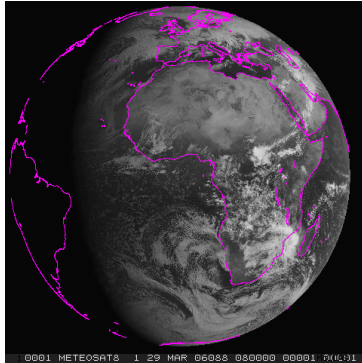
OR



Sources: Tan and Storelvmo 2016  
Korolev et al. 2017

# Data & Method

# Geostationary space-based instrument SEVIRI on board MSG



- **SEVIRI** (Spinning Enhanced Visible and Infrared Imager) is a passive instrument on the METEOSAT Second Generation satellite
- 12-channel imager
- Spatial resolution **3 km × 3 km** at nadir
- Temporal resolution **15 mins**

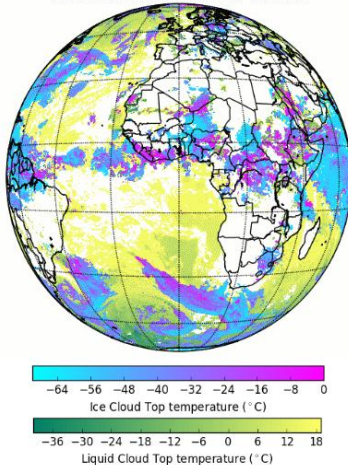
Picture source: NASA Langley pat Minnis group



# Cloud properties are obtained from CLAAS-2

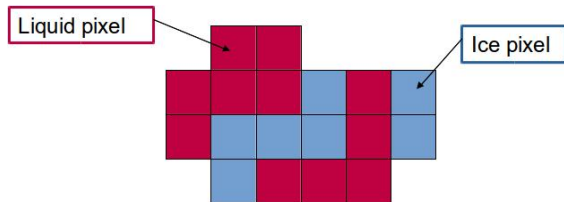


MSG-SEV-CLAAS2 2009-07-01 0000



- **CLAAS-2** (Cloud properties dAtAset using SEVIRI) Benas et al. 2017
- Spatial resolution:  $0.05^\circ \times 0.05^\circ$
- Temporal resolution: **15 mins**
- CLAAS-2 retrieves information on cloud microphysical properties, **such as cloud top temperature, effective radius, optical depth, cloud top pressure, cloud phase...**

# Mixed phase clouds from a geostationary satellite



Definition of mixed phase clouds from a passive instrument:

Cloud objects (connected cloudy pixels) which **contain both liquid and ice pixels** at **cloud top**. To avoid multi-layer scene, we constrain for the cloud top temperature variation to be less  $10^{\circ}\text{C}$ .

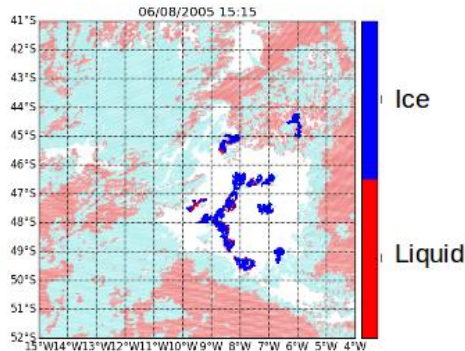
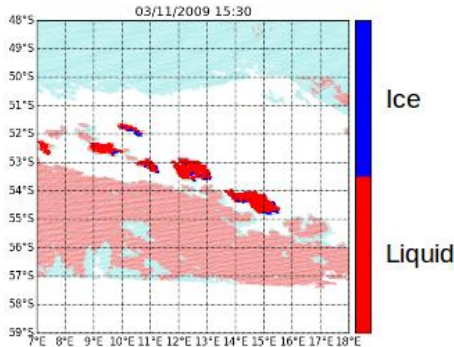
We look for different cloud top temperature (CTT) ranges:

- $-8^{\circ}\text{C} < \text{CTT} < 0^{\circ}\text{C}$
- $-20^{\circ}\text{C} < \text{CTT} < -8^{\circ}\text{C}$
- $-30^{\circ}\text{C} < \text{CTT} < -20^{\circ}\text{C}$

# Examples of mixed phase clouds from SEVIRI

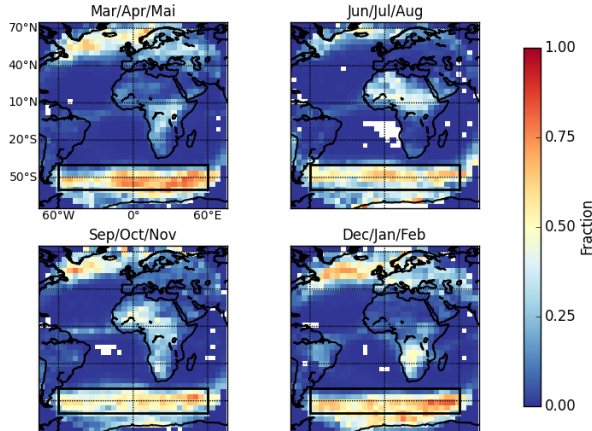


In the example below of the 03/11/2009, there are six mixed phase clouds. In the example of the 06/08/2005, there are nine mixed phase clouds. The cloud objects in pastel blue or pastel red are not considered because they have a **variation of cloud top temperature greater than 10°C**.



# Results & Discussions

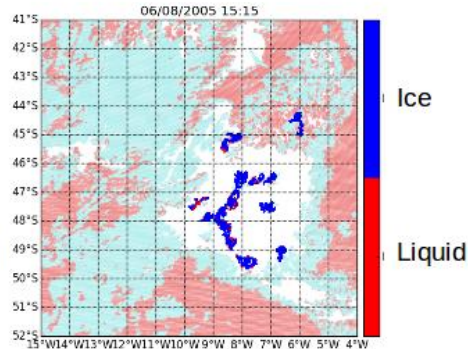
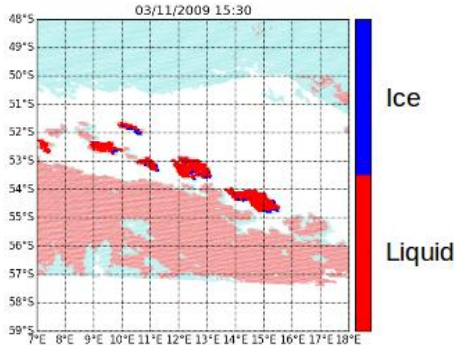
# Spatial distribution of mixed phase clouds



- Mixed phase cloud fraction relative to the total number of clouds over the entire temperature spectrum
- Similar to Figure 5.26 from Korolev et al. 2017 using active satellite measurements
- We focus on the **Southern Ocean** (black rectangle) from 2004 to 2015
- According to Gettelman and Sherwood 2016, the **uncertainty of the cloud feedback** mainly come from **the cloud thermodynamic phase over the Southern Ocean**

# Which parameters do influence the thermodynamic phase transition?

# Examples of mixed phase clouds from SEVIRI

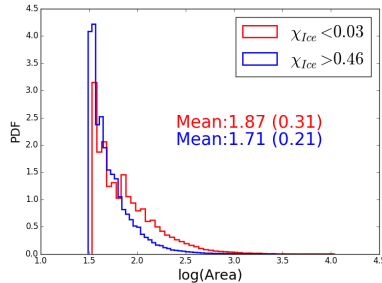
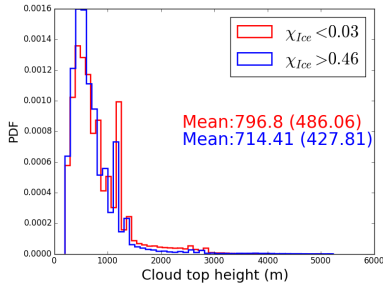


We look at the **distribution of cloud microphysical and radiative parameters** of mixed phase cloud for **different ice fraction** regimes

# Parameter distributions for different ice fraction regimes



For cloud top temperatures ranging from  $-8^{\circ}\text{C}$  to  $0^{\circ}\text{C}$

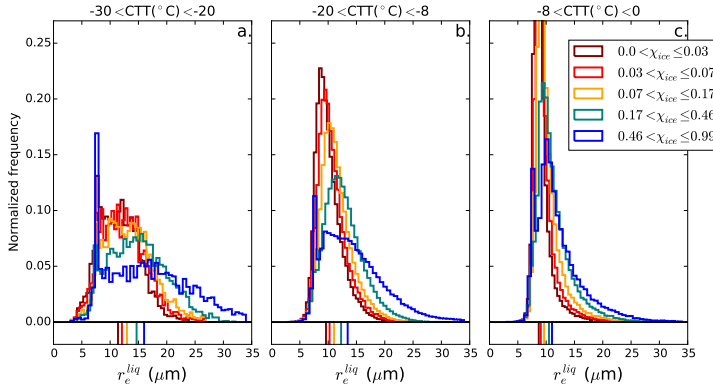


## Explanations:

The means are indicated with the standard deviations in parenthesis. **The distributions between high and low ice fractions are similar for most of the parameters and do not seem to enhance or inhibit the phase transition**



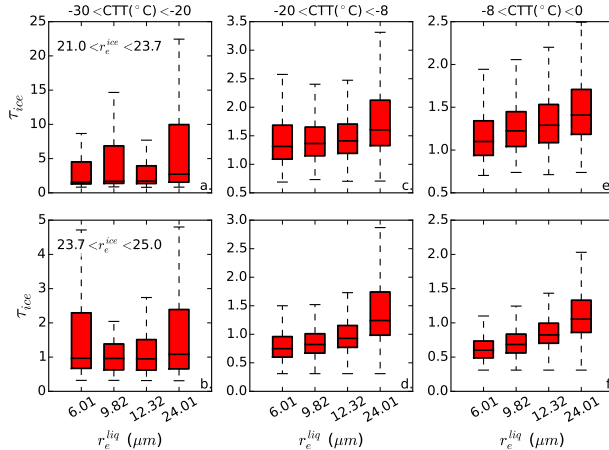
# Large cloud droplets are associated with large ice fraction



## Results & Discussions

- This effect can be associated with **secondary ice production (SIP)** in line with Rosenfeld et al. 2011 and Coopman et al. 2020
- Secondary ice production is associated with an **increase in the ice concentration**
- This effect is observed at different cloud top temperature ranges

# Secondary Ice Production (SIP) is associated with an increase in ice concentration

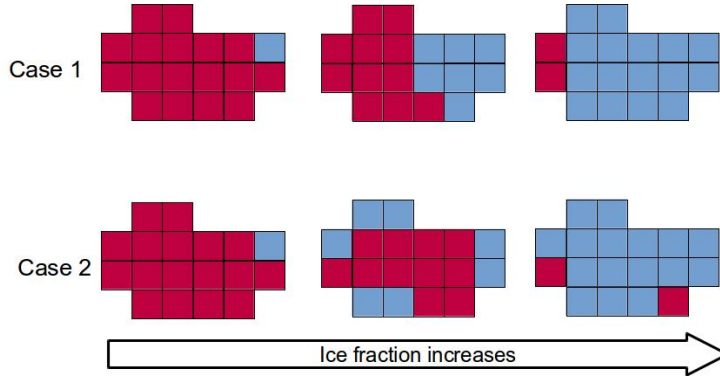


## Results & Discussions

- Cloud optical thickness of ice pixels ( $\tau_{ice}$ ) as a function of cloud droplet effective radius ( $r_e^{liq}$ ). Columns: different cloud top temperature ranges (CTT); rows: different effective radius of ice crystals ( $r_e^{ice}$ )
- When the size of ice crystals is constrained, an **increase in  $\tau_{ice}$  is associated with an increase in ice crystal concentration**
- The potential increase in ice concentration ( $\propto$  SIP) is not observed for cloud top temperatures between  $-30^{\circ}C$  and  $-20^{\circ}C$

# What is the spatial partitioning of ice and liquid pixels when clouds transition from liquid to ice?

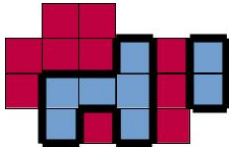
# How does the ice fraction increase?



Two different conceptual ideas:

- **Case 1:** The glaciation spreads from pixels to pixels
- **Case 2:** Ice-pixel clusters are created ("ice pockets") as the ice fraction increases

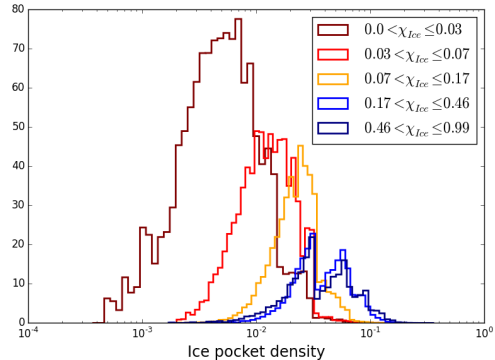
# Ice pockets density increases with the ice fraction



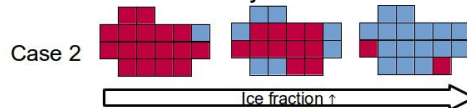
2 ice pockets and 3 liquid pockets

## Results:

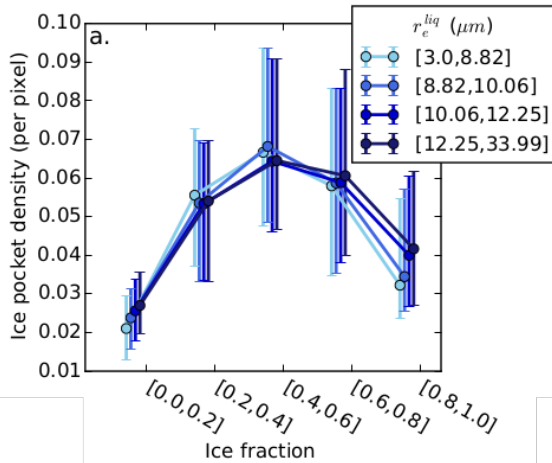
- Ice pocket density distributions for different regimes of cloud ice fraction
- **The increase in ice fraction is associated with an increase in ice pockets**



## Most likely Case:



# Ice pocket density for different regimes of cloud droplet effective radius



## Results & Discussions:

- Ice pocket density as a function of ice fraction for different regimes of cloud droplet effective radius ( $r_e^{liq}$ )
- **The increase in ice fraction is associated with an increase in ice pocket density and then a decrease** (ice pockets merge)
- For the different regimes of  $r_e^{liq}$  there is not much difference in the number of ice pockets
- **The cloud droplet size does not influence the number of ice pockets**

# Spatial distribution of liquid and ice phase



$$D(P) \propto 2 \cdot \frac{\ln(P)}{\ln(A)}$$

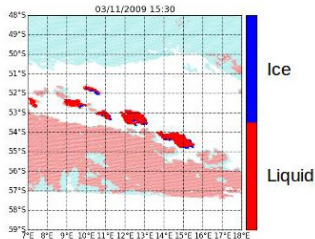
P: Cloud perimeter

A: Cloud area

Source: Batista-Tomás et al. 2016

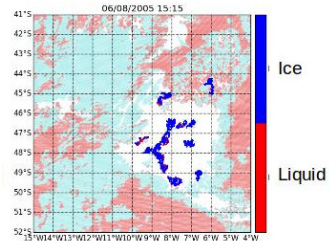
$$D(P) < 1.96$$

Clouds have **regular boundaries**  
(cumulus type)

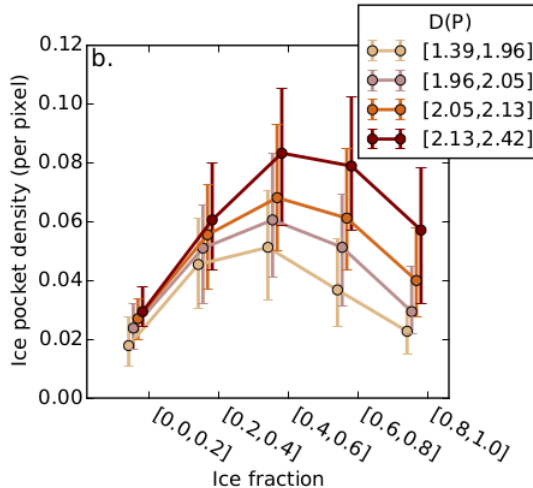


$$D(P) > 2.13$$

Clouds have **ragged boundaries**  
(frontal type)



# Ice pocket density for different regimes of $D(P)$

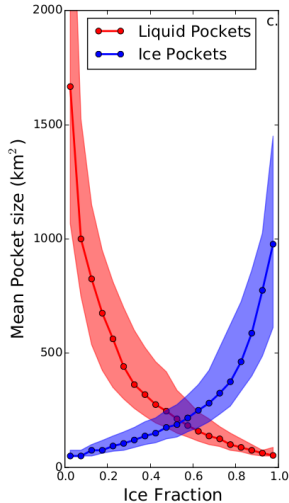


## Results & Discussions:

- Ice pocket density as a function of ice fraction for **different regimes of  $D(P)$**
- **The larger the  $D(P)$ , the higher the ice pocket density**
- Ragged-boundary clouds have a higher ice pocket density, the cloud shape influences the number of ice pockets (or reverse ?!)
- Clouds with regular boundaries are in a **more uniform environment**, the glaciation spreads from pixels to pixels or clouds are glaciated more quickly



# Size of liquid and ice pockets



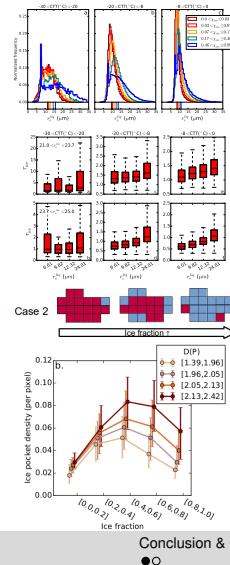
## Results & discussions

- Mean pocket size as a function of the ice fraction for liquid and ice pockets
- Considering ice pockets, **at first ice pocket size increases slowly** until ice fraction equals to 0.6 and **then increases rapidly** for ice fraction greater than 0.6
- Ice pocket density is increasing and growing and then they merge.
- The opposite is observed for liquid pockets

# Conclusions



- We analyzed the thermodynamic cloud **phase partitioning** for different temperature ranges,
- Analysis of the distributions for different parameters
- Evidence of processes showing a **larger cloud droplet effective radius ( $r_e^{liq}$ ) is associated with higher ice fraction**
- Mixed phase clouds with **larger  $r_e^{liq}$  are potentially associated with higher ice crystal concentration**
- Clouds transition from liquid to ice by an **increase of the ice pocket density**
- The shape of clouds impact the number of ice pockets



- Compare our results with lidar-radar **DARDAR** products from CALIPSO/CLOUDSAT which retrieve directly the **ice concentration** (Sourdeval et al. 2018), to confirm that large cloud droplets are associated with higher ice crystal concentration in mixed phase clouds
- Comparing our results with **field campaigns** in the Southern Ocean
- ...



A. R. Batista-Tomás et al. „Classification and dynamics of tropical clouds by their fractal dimension“. In: *Quarterly Journal of the Royal Meteorological Society* 142.695 (2016), pp. 983–988. ISSN: 1477870X. DOI: 10.1002/qj.2699.



Nikos Benas et al. „The MSG-SEVIRI-based cloud property data record CLAAS-2“. In: *Earth System Science Data* 9.2 (July 2017), pp. 415–434. ISSN: 1866-3516. DOI: 10.5194/essd-9-415-2017. URL: <https://www.earth-syst-sci-data.net/9/415/2017/>.



Quentin Coopman et al. „Space Based Analysis of the Cloud Thermodynamic Phase Transition for Varying Microphysical and Meteorological Regimes“. In: *Geophysical Research Letters* 47.6 (Mar. 2020). ISSN: 0094-8276. DOI: 10.1029/2020GL087122. URL: <https://onlinelibrary.wiley.com/doi/abs/10.1029/2020GL087122>.



Andrew Gettelman and S. C. Sherwood. „Processes Responsible for Cloud Feedback“. In: *Current Climate Change Reports* 2.4 (Dec. 2016), pp. 179–189. ISSN: 2198-6061. DOI: 10.1007/s40641-016-0052-8. URL: <http://dx.doi.org/10.1007/s40641-016-0052-8>. URL: <http://link.springer.com/10.1007/s40641-016-0052-8>.



Alexei Korolev et al. „Mixed-Phase Clouds: Progress and Challenges“. In: *Meteorological Monographs* 58 (Jan. 2017), pp. 5.1–5.50. ISSN: 0065-9401. DOI: 10.1175/AMSMONOGRAPHIS-D-17-0001.1. URL: <http://journals.ametsoc.org/doi/10.1175/AMSMONOGRAPHIS-D-17-0001.1>.



Daniel T. McCoy et al. „On the relationships among cloud cover, mixed-phase partitioning, and planetary albedo in GCMs“. In: *Journal of Advances in Modeling Earth Systems* 8.2 (June 2016), pp. 650–668. ISSN: 19422466. DOI: 10.1002/2015MS000589. arXiv: arXiv:1011.1669v3. URL: <http://doi.wiley.com/10.1002/2015MS000589>.



Johannes Mülmenstädt et al. „Frequency of occurrence of rain from liquid-, mixed-, and ice-phase clouds derived from A-Train satellite retrievals“. In: *Geophysical Research Letters* 42.15 (2015), pp. 6502–6509. ISSN: 19448007. DOI: 10.1002/2015GL064604.



Daniel Rosenfeld et al. „Glaciation temperatures of convective clouds ingesting desert dust, air pollution and smoke from forest fires“. In: *Geophysical Research Letters* 38.21 (Nov. 2011), p. L21804. ISSN: 00948276. DOI: 10.1029/2011GL049423. URL: <http://doi.wiley.com/10.1029/2011GL049423>.



Odran Sourdeval et al. „Ice crystal number concentration estimates from lidar–radar satellite remote sensing – Part 1: Method and evaluation“. In: *Atmospheric Chemistry and Physics* 18.19 (Oct. 2018), pp. 14327–14350. ISSN: 1680-7324. DOI: 10.5194/acp-18-14327-2018. URL: <https://www.atmos-chem-phys.net/18/14327/2018/>.



Ivy Tan and Trude Storelvmo. „Sensitivity Study on the Influence of Cloud Microphysical Parameters on Mixed-Phase Cloud Thermodynamic Phase Partitioning in CAM5“. In: *Journal of the Atmospheric Sciences* 73.2 (Feb. 2016), pp. 709–728. ISSN: 0022-4928. DOI: 10.1175/JAS-D-15-0152.1. URL: <http://journals.ametsoc.org/doi/10.1175/JAS-D-15-0152.1>.