

FARMLAND TAKE AND THE BUILDING OF THE INDUSTRIAL ZONES

**Czech University of Life Sciences Prague
Faculty Agrobiological, Food and Natural Resources
Department of pedology and protection of soils**

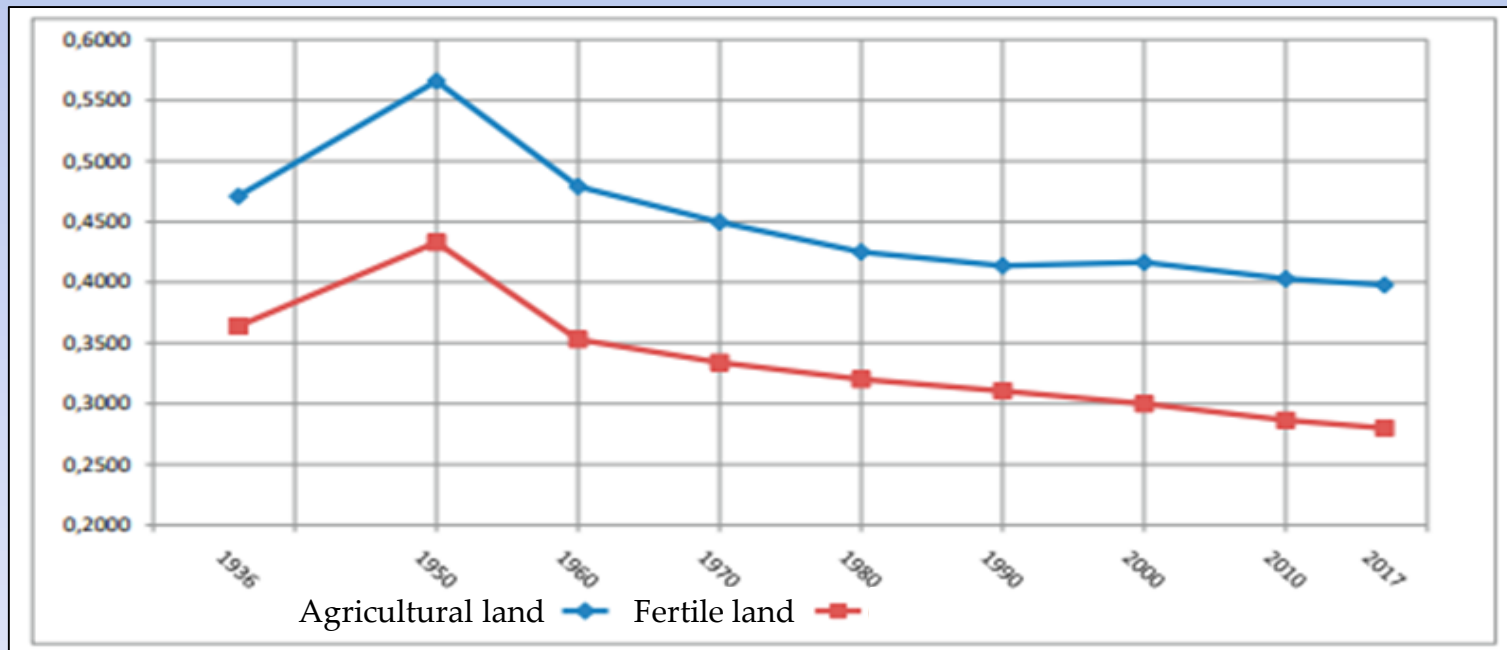


**Jaroslava Janků, Josef Kozák,
Kristina Heřmanová**

Farmland take

Decrease the share of agricultural land in the total area of the state is the fastest in comparison with other EU countries (Department of Agriculture, 2016)

From 1966 to 2007 235 thousand hectares agricultural land were lost (3 %)



Building of industrial zones

- **Solution of the unemployment**

X



- **Size**
- **Protection classes**
- **Water deficit**
- **Using of industrial zones x using of brownfields**
- **Agency workers x criminality**
- **Road congestion**

Building of industrial zones

- **In Czechia - 147 industrial zones**
- **The number of industrial zones exceeds demand**
- **„Program for the support of business real estate and infrastructure,, issued by the Ministry of Industry and Trade in 2015**
- **Preconditions for the creation of new jobs**

Methods

- **Analysis for 3 regions in Czechia**

Assessment:

- **area of industrial zones**
- **use of industrial zones**
- **number of employees (Czech and foreigners)**
- **bonita soil**

Results:

- **The benefits of industrial zones for the state and society**

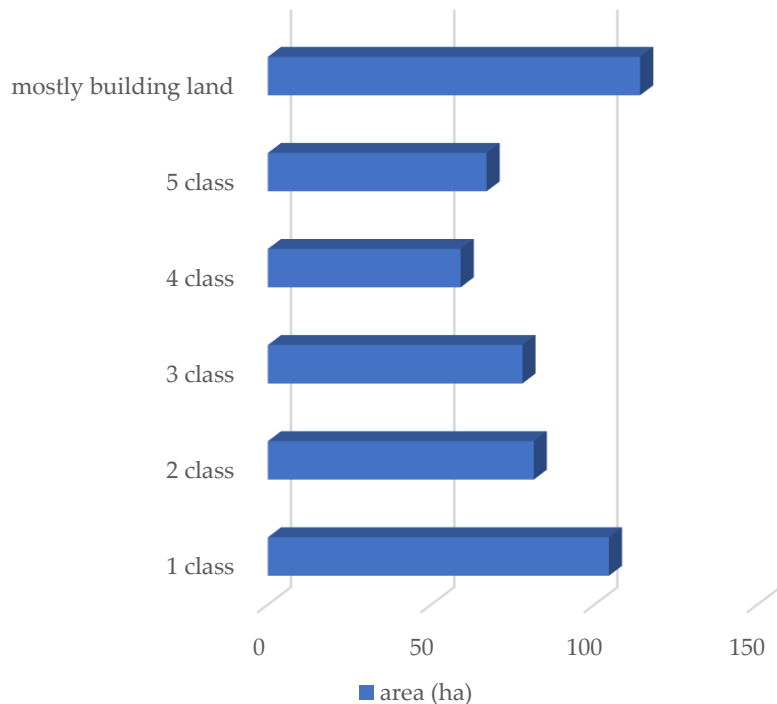
Brownfields and their use for the construction of industrial zones

INDUSTRIAL ZONE	Area (ha)	Brownfield (ha)	%
Doubí	107,82	2,24	2,08
Růžodol	62,54	1,59	2,54
Na Americe	48,41	27,69	57,2
Hrádek nad Nisou	27,39	4,09	14,93
Okrouhlá	21,97	0	0
Kuřivody	70,47	2,65	3,76
Za Krystalexem	17,91	5,71	31,89
Vesecko	40,86	2,53	6,19
TOTAL	397,36	46,5	11,7

- Only 11% of the total area of industrial zones consists of revitalized areas ●

Industrial zones and protection class

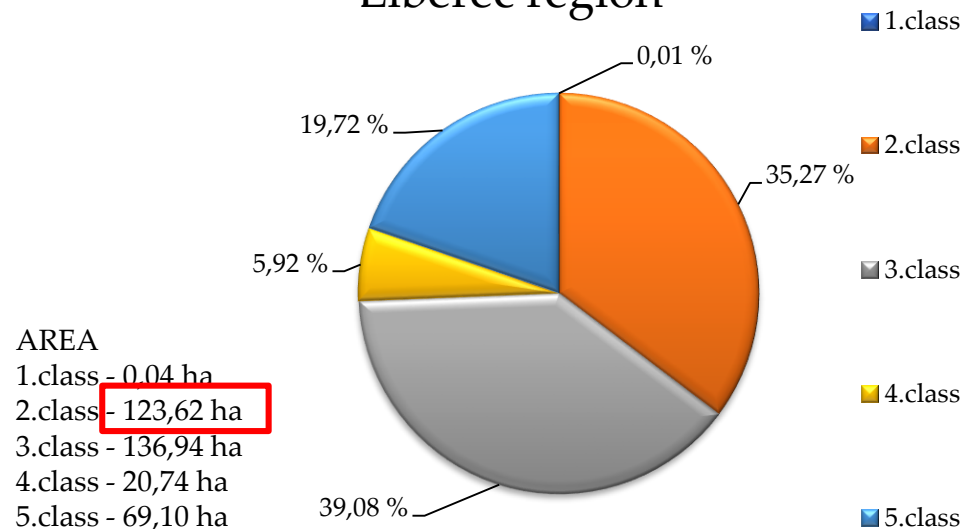
- Hradec Králové Region**



- Liberec Region**

Protection classes in the industrial zones

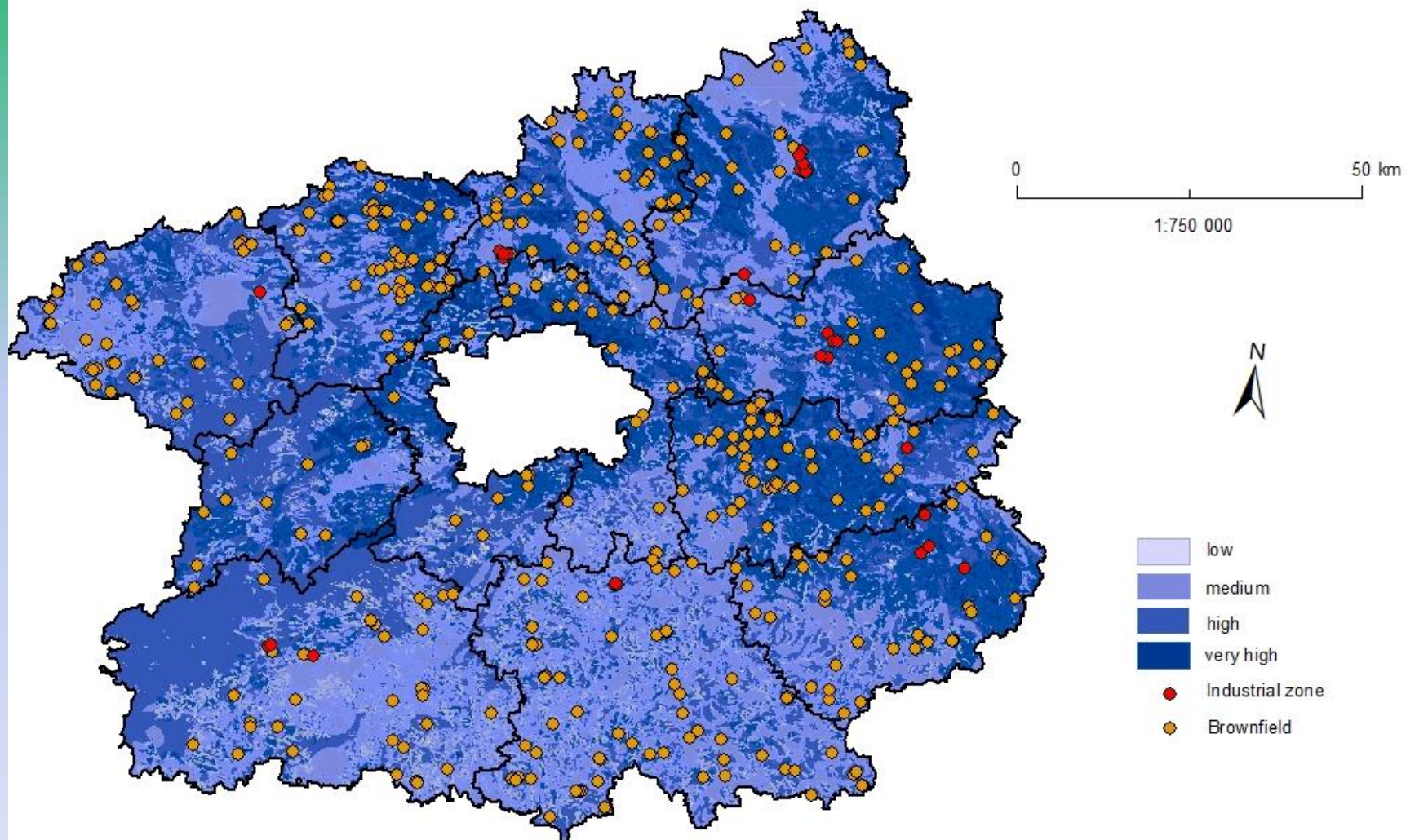
Liberec region



Industrial zones - more than half soils in the 1st - 3rd protection class

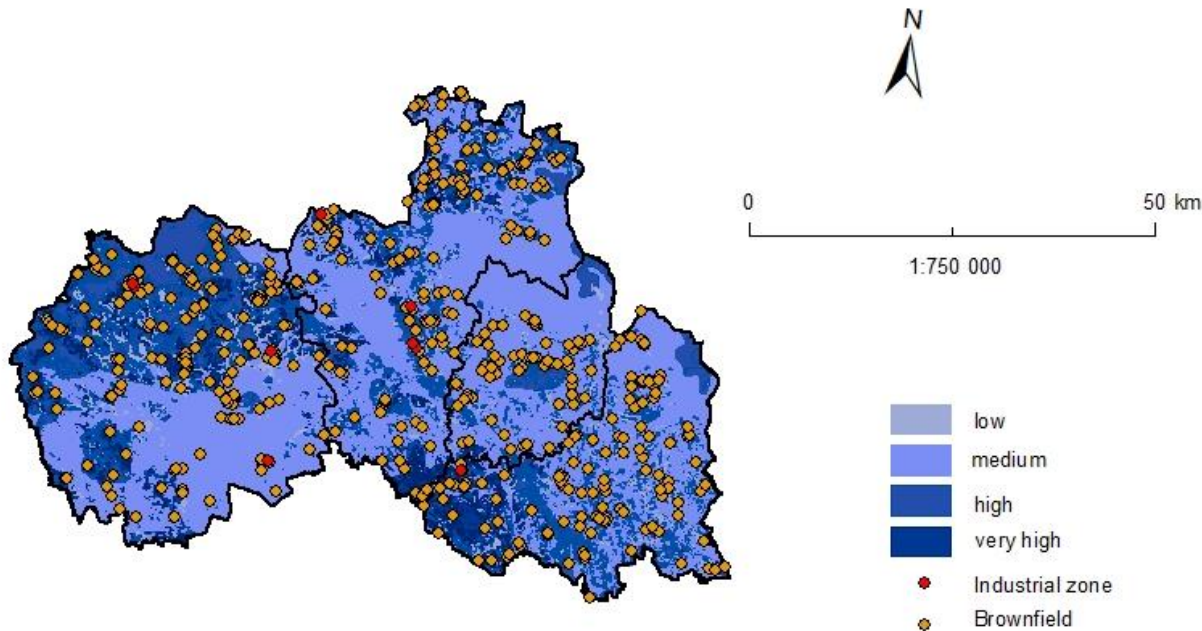
CENTRAL BOHEMIA REGION

Retention water capacity



LIBEREC REGION

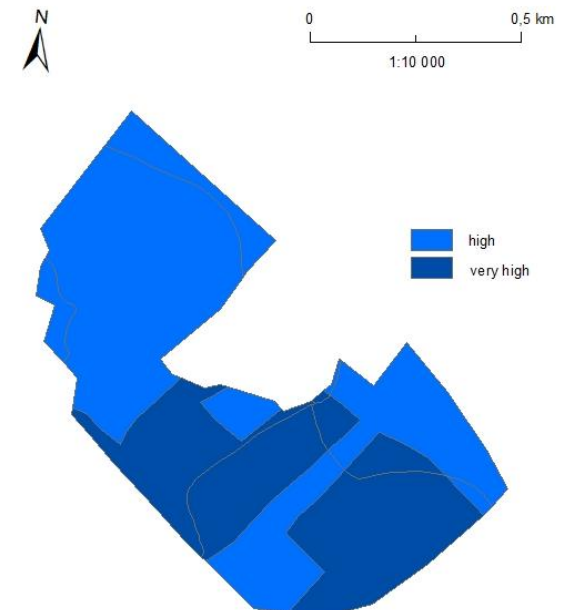
Retention water capacity



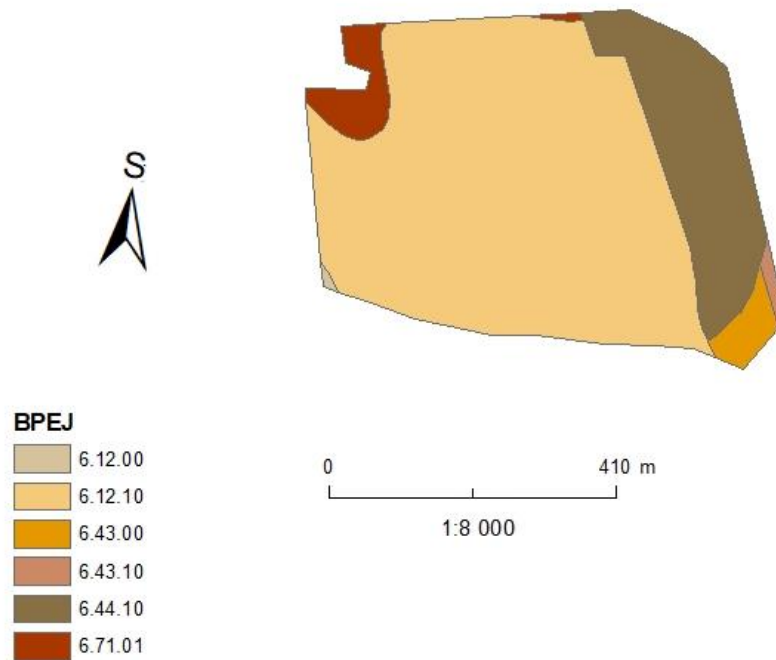
- **Number of Brownfields: 516**
- **Number of Industrial zones: 8**
- **The largest industrial zone in Liberec Region: 125 ha**
- **Liberec Region Area: 3 163 km²**

RETENTION WATER CAPACITY

Industrial zone Liberec - North



Industrial zone in Liberec Region Hrádek nad Nisou

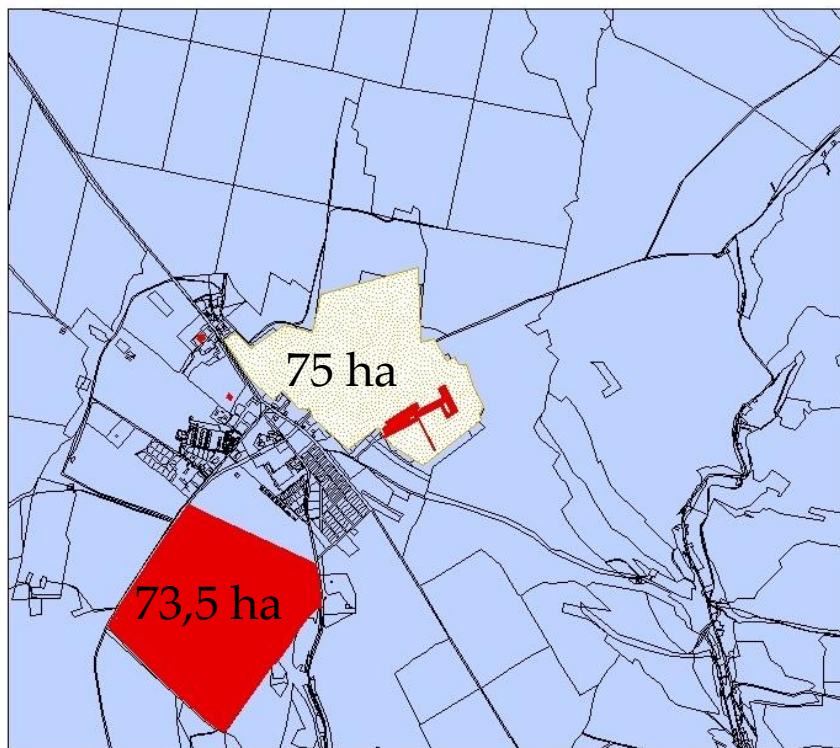


Protection class	%
1	0,15
2	73,42
2	2,38
2	0,68
3	19,22
5	4,14

Area: 40ha
Use: 15 ha!

The use of brownfields is insufficient

INDUSTRIAL ZONE
Kuřivody
and the use of Brownfields



LEGENDA

- Brownfield
- Industrial zone
- Land parcel

0 1 km
1:24 000



Insufficient
incentives to reuse
brownfields

- **In Czechia about 11 000 brownfields**
- **Of the 102 Industrial zones, 98 were created on a green field**
- **(CzechInvest, 2017)**

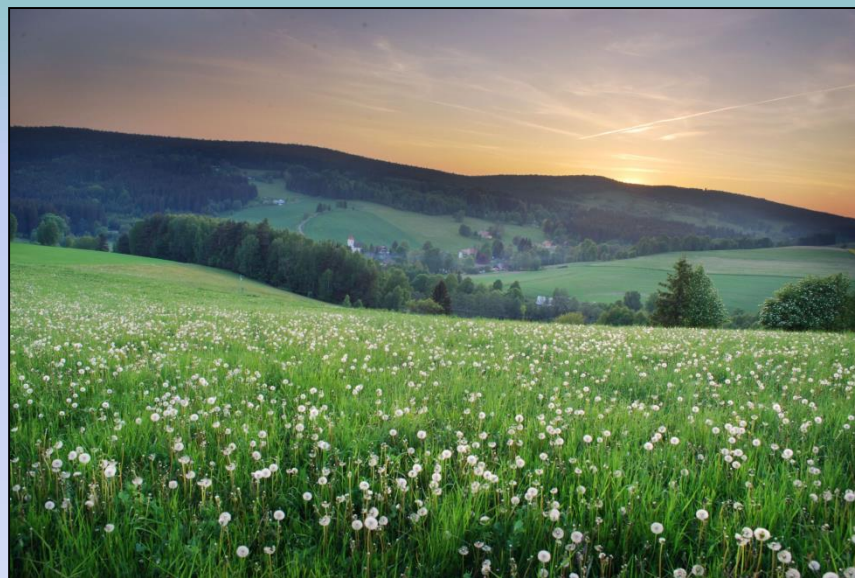
Conclusion

- **For the construction of industrial zones fertile lands are widely used – Liberec: 35% of industrial zones are built on the 1st and 2nd class of the soil protection**
- **Liberec Region- only 11 % area of the industrial zone are built on brownfields**
- **Industrial zones are not used completely**
- **No analysis to confirm the benefit of Industrial zones**

Thank you for your attention



X



Study supported by Ministry of Agriculture CZ (grant n. QK1910299)