

NH3.12/CL2.49/SSS2.11

Landslides and Soil Erosion in a Changing Climate: Analysis, Trends, Uncertainties and Adaptation Solutions

Guido Rianna, Stefano Luigi Gariano, Fausto Guzzetti, Alfredo Reder, Monia Santini

Chat Thu, 07 May, 10:45–12:30



Web survey

As reported in the mail we sent you on Monday, a websurvey has been prepared to collect your insights and remarks about the Session's topics.

If you haven't already compiled it, please go to www.menti.com using the code

46 79 55

We recall that it is not possible to trace the single contributions but only aggregated information will be collected and discussed at the end of the session.

Furthermore, they are available for all the concerned.



Session organization

According to the works you submitted to the Session, we identified four subtopics concerning:

- **European case studies** moderated by *Stefano Luigi Gariano*
- **Extra-European case studies** moderated by *Alfredo Reder*
- **Modeling issues supporting** moderated by *Guido Rianna*
- **Water erosion dynamics** moderated by *Monia Santini*



European case studies

D1898 | EGU2020-9327 ★ | **Highlight**

Impacts of future land cover and climate changes on landslide susceptibility. Results obtained from regional-scale modelling in the Pyrenees. ▶

Marcel Hürlimann, Vicente Medina, Zizheng Guo, Carol Puig-Polo, Antonio Lloret, and Jean Vaunat

D1899 | EGU2020-3358 ★

Towards a dynamic landslide susceptibility assessment: evaluation of a novel climate-related variable ▶

Irene Corno, Corrado Camera, Greta Bajni, Stefania Stevenazzi, and Tiziana Apuani

D1900 | EGU2020-20083 ★ | **Highlight**

Snowmelt influence in shallow landslides ▶

Renzo Rosso, Maria Cristina Rulli, Mattia Galizzi, Davide Danilo Chiarelli, and Daniele Bocchiola

Stefano Luigi Gariano, CNR-IRPI Italy



Extra-European case studies

D1902 | EGU2020-4546 ★

[On the Landslide Hazard with the Impact of Climate Change in Central Taiwan](#) ▶

Keh-Jian Shou

D1903 | EGU2020-22030 ★

[Swelling clayey soils promote slope instability in the Muhunguzi watershed, western Burundi](#) ▶

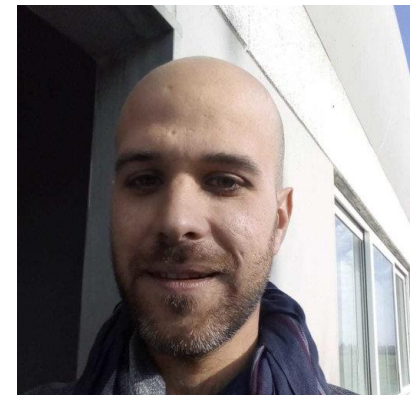
Bruno Delvaux, Clairia Kankurize, and Gervais Rufyikiri

D1904 | EGU2020-5703 ★

[Daily rainfall above 75mm is a major trigger to landslides in the Muhunguzi, western Burundi](#) ▶

Clairia Kankurize, Gervais Rufyikiri, and Bruno Delvaux

Alfredo Reder, CMCC Foundation



Modeling issues

D1901 | EGU2020-21500 ★

[Technical solutions for landslide risk mitigation with law impact on landscape](#) ▶

Evelina Volpe, Diana Salciarini, and Elisabetta Cattoni

D1906 | EGU2020-22249 ★ | **Highlight**

[Climate change and landslides: introducing a thermo-hydro-mechanical approach](#) ▶

Gianvito Scaringi

D1907 | EGU2020-11816 ★

[Numerical Modeling of Non-Newtonian Flows within a Newtonian Equation Framework](#) ▶

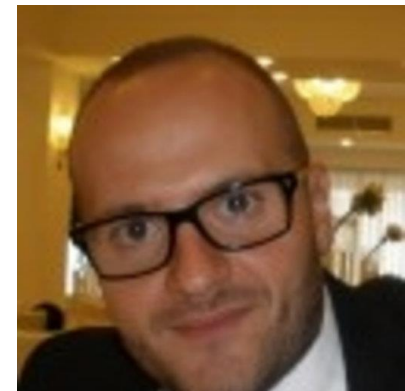
Gaurav Savant, Ian Floyd, and Ronald Heath

D1908 | EGU2020-22194 ★

[Soil Moisture Initialization Input Scale Effect on Parameter Value Identification of a Physically Based Distributed Hydrologic Modelling](#) ▶

Nawa Raj Pradhan, Steven Brown, and Ian Floyd

Guido Rianna, CMCC Foundation



Water erosion dynamics

D1909 | EGU2020-1853 ★ 

[SWAT modeling for assessing future scenarios of soil erosion in West Rapti River Basin of Nepal](#) ▶

Rocky Talchabhadel, Hajime Nakagawa, Kenji Kawaike, Kazuki Yamanoi, Anil Aryal, Binod Bhatta, and Saroj Karki

D1910 | EGU2020-11356 ★

[Exploiting Copernicus Climate Change Service \(C3S\) to assess ongoing and future soil erosion over Italy](#) ▶

Guido Rianna, **Monia Santini**, Marco Mancini, Roberta Padulano, and Sergio Noce

Monia Santini, CMCC Foundation



Further details

We really appreciate your interest for the session.

We are sure that the discussion could be respectful, interesting and fruitful.

Nevertheless, we support you for preventing unbecoming conduct or any other issue

Thank you!

