



# Virtual Data Help Desk

**EGU 2020: Sharing Geoscience Online**  
**May 4th-8th, 2020**

#shareEGU20  
#DataHelpDesk  
[bit.ly/DataHelpEGU20](https://bit.ly/DataHelpEGU20)



Helen Glaves  
EGU ESSI Division President

@essi\_egu

ORCID:0000-0001-8179-4444







# Virtual Data Help Desk EGU 2020

## 4–8 May 2020

- Engage with Data Experts
- Learn Skills and Techniques
- Make your Data Open and FAIR



Ask questions through twitter via **#DataHelpDesk**



View short tutorials and demos. Details: [bit.ly/DataHelpEGU20](https://bit.ly/DataHelpEGU20)



*Credit: Shelley Stall*

A program of EGU, AGU, ESIP,  
EarthCube, and their partners.





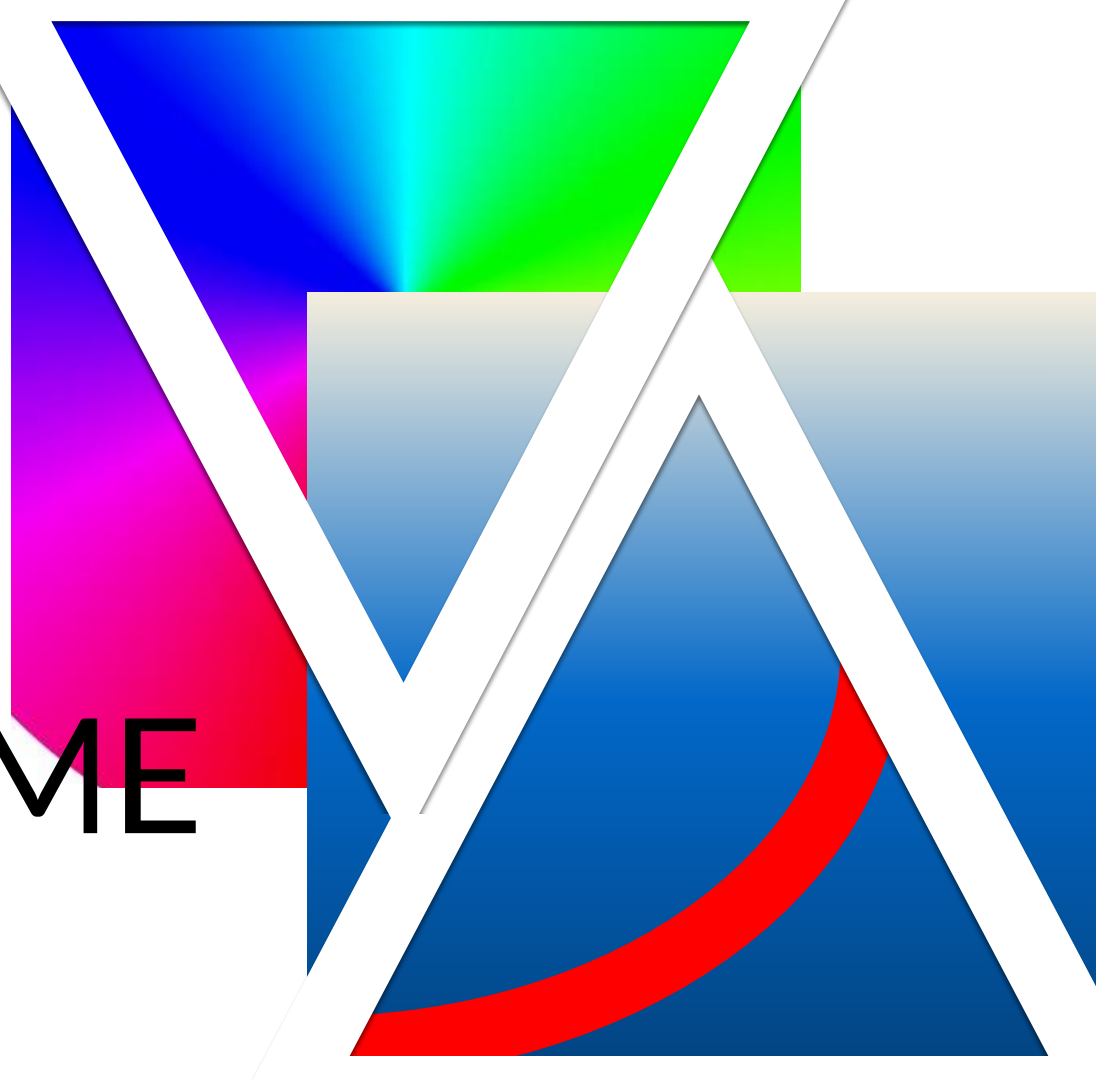
# ESIP Welcome

Erin Robinson,  
ESIP Executive Director  
@esipfed | @esip\_erin



VARIETY

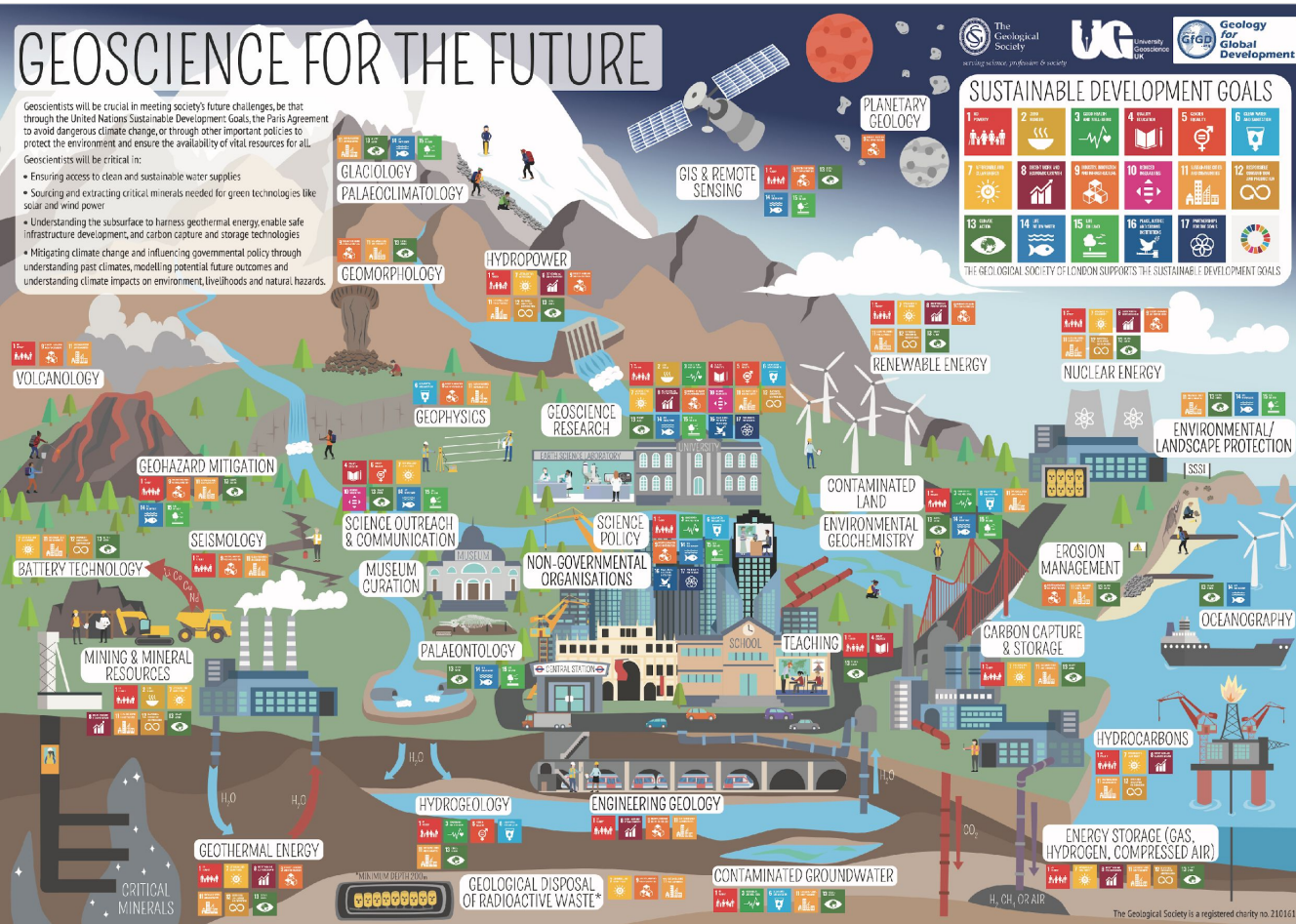
VOLUME



# GEOSCIENCE FOR THE FUTURE

Geoscientists will be crucial in meeting society's future challenges, be that through the United Nations Sustainable Development Goals, the Paris Agreement to avoid dangerous climate change, or through other important policies to protect the environment and ensure the availability of vital resources for all. Geoscientists will be critical in:

- Ensuring access to clean and sustainable water supplies
- Sourcing and extracting critical minerals needed for green technologies like solar and wind power
- Understanding the subsurface to harness geothermal energy, enable safe infrastructure development, and carbon capture and storage technologies
- Mitigating climate change and influencing governmental policy through understanding past climates, modelling potential future outcomes and understanding climate impacts on environment, livelihoods and natural hazards.



## Variety

THE 'V' THAT REQUIRES WE  
WORK TOGETHER!



Supported by:



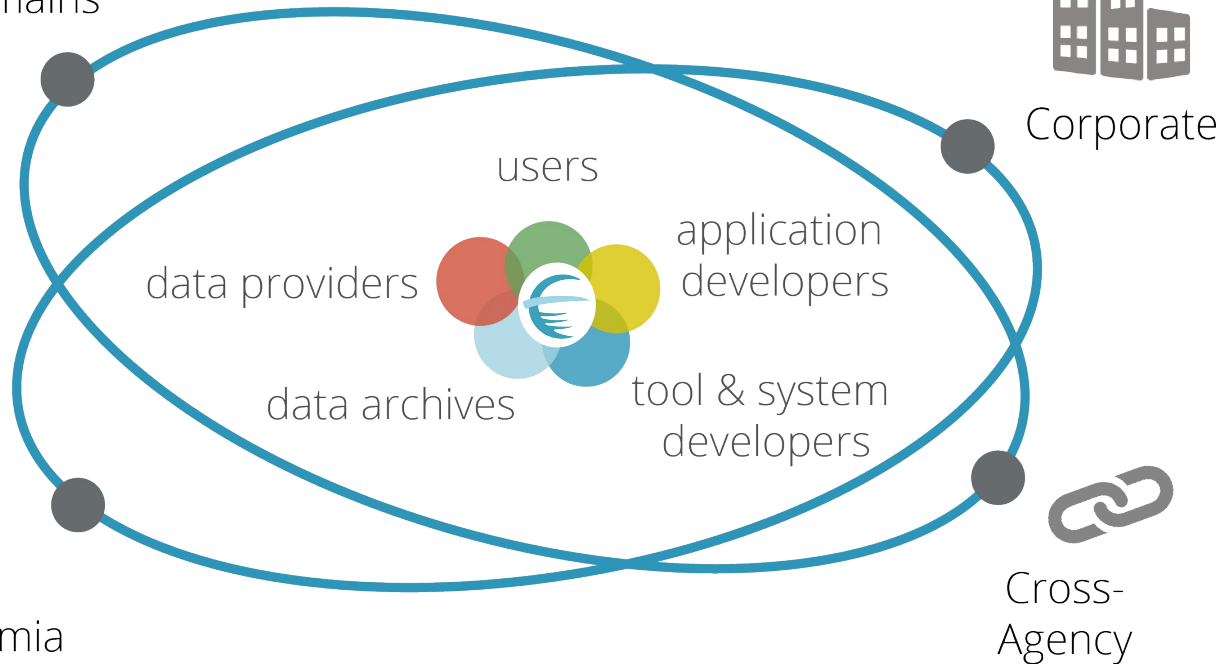
120+ Member Orgs  
1000 Active Participants  
30+ Working Groups



Multiple Science  
Domains



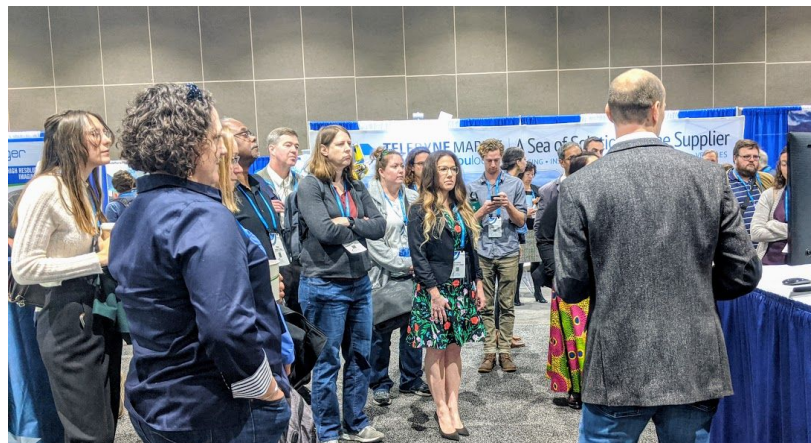
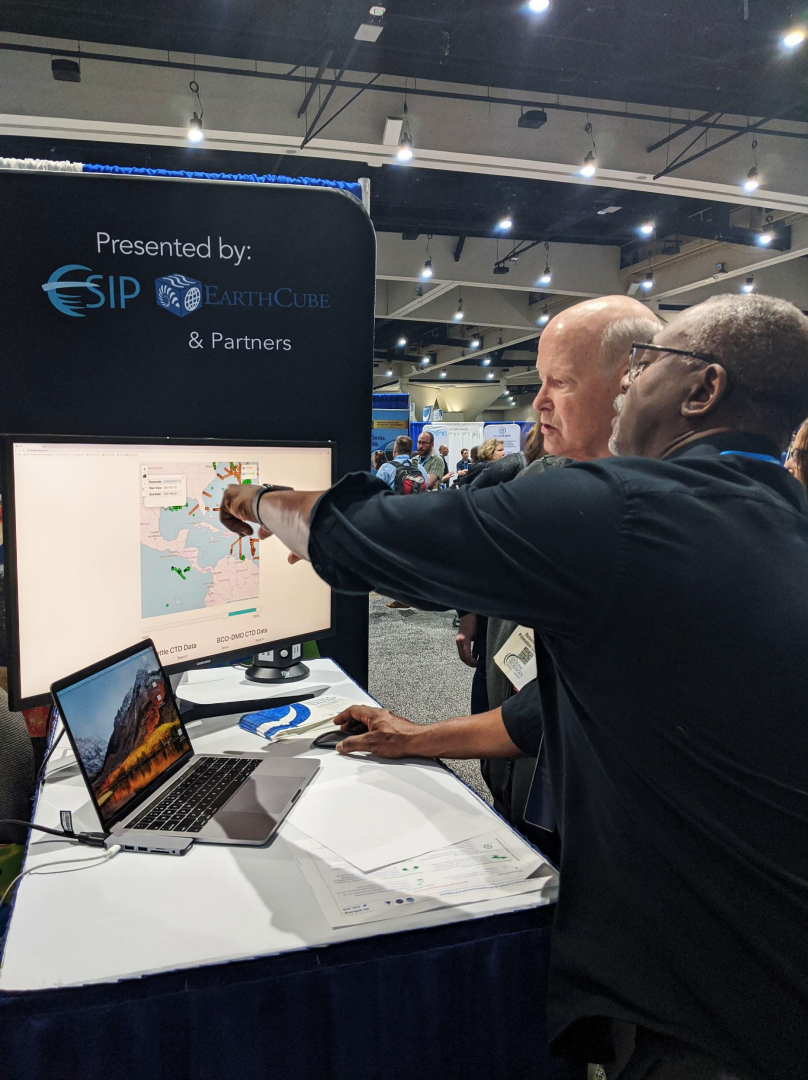
Academia





# DATA HELP DESK

Provides researchers with opportunities to engage with informatics experts familiar with their scientific domain and learn about skills and techniques that help further research and make data and software open and FAIR.



# Data Help Desk History



2020

- 1st International & virtual Data Help Desk @EGU!

2018

- Data Fair goes to Oceans Sciences
- 1<sup>st</sup> Community planned Help Desk at ESA

2017

- Data Fair Expands
- Data Help Desk is added at AGU FM

2015

- 1<sup>st</sup> Data Fair
- 3 panels at AGU FM

# Greetings!

Shelley Stall

AGU Sr. Director, Data Leadership

sstall@agu.org @ShelleyStall

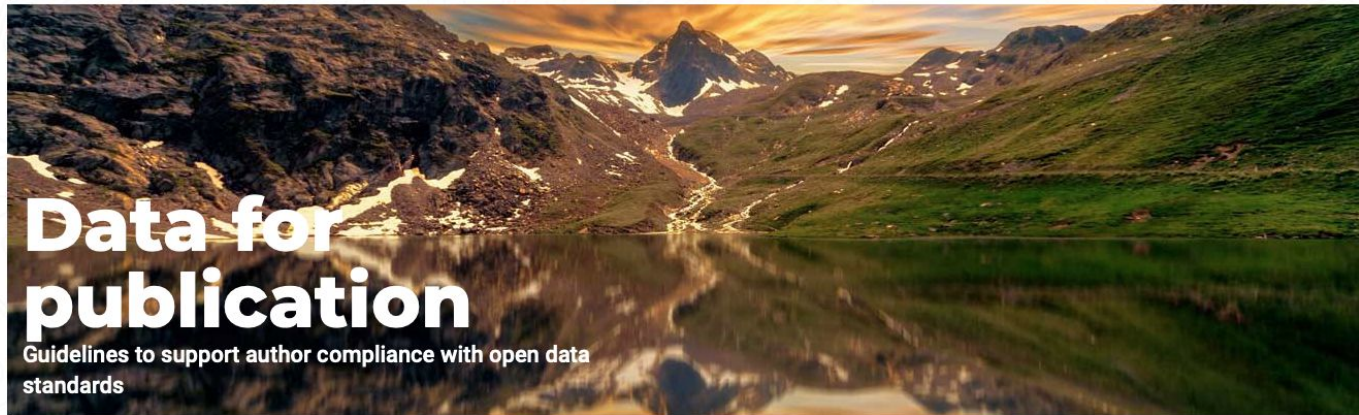
<https://orcid.org/0000-0003-2926-8353>



**AGU's position statement on data affirms that**  
**“Earth and space science data are a world heritage,**  
**and an essential part of the science ecosystem. All**  
**players in the science ecosystem—researchers,**  
**repositories, publishers, funders, institutions,**  
**etc.—should work to ensure that relevant scientific**  
**evidence is processed, shared, and used ethically,**  
**and is available, preserved, documented, and fairly**  
**credited.”**



<https://www.agu.org/Publish-with-AGU/Publish/Author-Resources/Data-for-Authors>



## WHAT IS NEEDED

The data that supports your research and the visualizations in your paper must be deposited in a trusted repository that supports the **FAIR** principles. When identifying the most appropriate repositories for your data, please consider the following prioritization. We recommend a repository that specializes in the data for your scientific domain as this will maximize the probability that the deposited data will be interoperable and reusable. If that is not available for your data type, next is your institutional repository, your computing center, and finally a general repository. Please note that the repository you select must offer a translation to English in order to comply.

Data availability statements   Data citations   Repository selection   Modeling data

### Data availability statement examples

For each dataset that supports your research, both a citation and a data availability statement must be present. The data availability statement for each data set must be included in the Open Research section of your paper indicating where readers can access the data. See the information on data



- Author Guidance
- Data Citation
- Software Citation
- Availability Statements
- Repository Selection





# Meet the Data Experts & How to Get Involved

Megan Carter  
ESIP Community Director  
[@esipfed](https://twitter.com/esipfed) | [megancarter@esipfed.org](mailto:megancarter@esipfed.org)



# DATA EXPERT TEAM

---

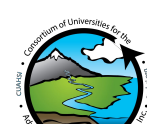


## 60+ Experts

Our team of Earth science data professionals has experience in informatics and in many scientific domains. They specialize in a wide range of data-related topics like finding, sharing, analyzing, publishing, and citing data.

---

# Participating Organizations



# GET INVOLVED

---

VIEW DEMOS &  
TUTORIALS

- ▶ See demos of tools and resources you can use to manage your data and enhance your research.

ASK  
QUESTIONS

- ▶ Share your questions any time from 5/4-5/8 by Tweeting with the hashtags #DataHelpDesk and #shareEGU20.

ATTEND  
VIRTUAL  
OFFICE  
HOURS

- ▶ Join our partners in live events throughout the week.



#DataHelpDesk  
#shareEGU20

This work is supported in part by NSF Grant # 1928208, as well as many other supporting agencies.