

Last Millennium/Last 2k temperatures in China based on reconstructions and compared to simulations

E. García Bustamante (CIEMAT)
J. F. González Rouco (UCM)
L. Fernández Donado (UCM)
J. Luterbacher (U. Giessen)
J. Jungclaus (MPI- Hamburg)

EMS 2016. 12-16 Sep, Trieste, Italy



1000 AD 1110

1300

1400

1500

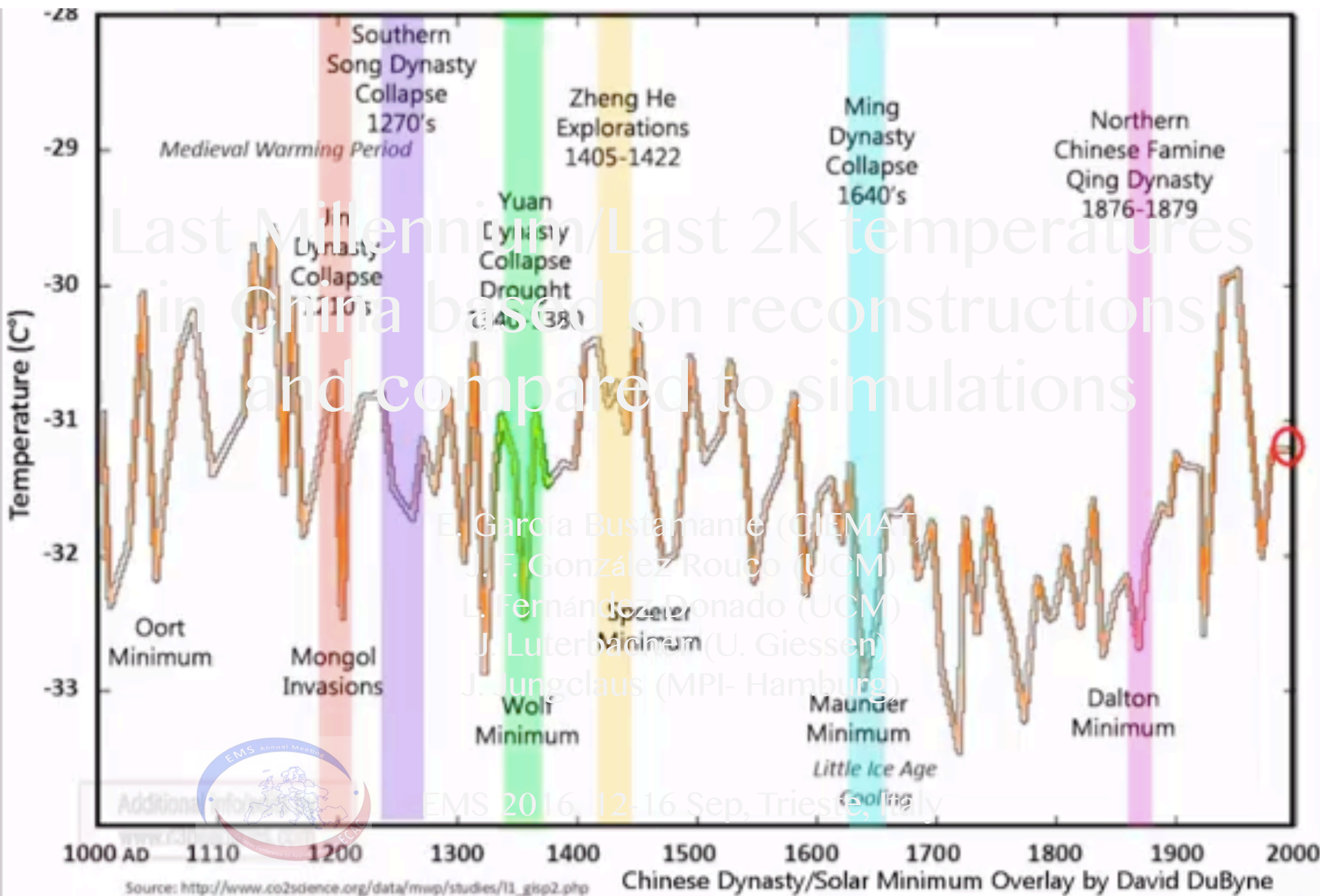
1600

1700

Source: http://www.co2science.org/data/mip/studies/t3_gisp2.php

Chinese Dynasty/Solar Minimum

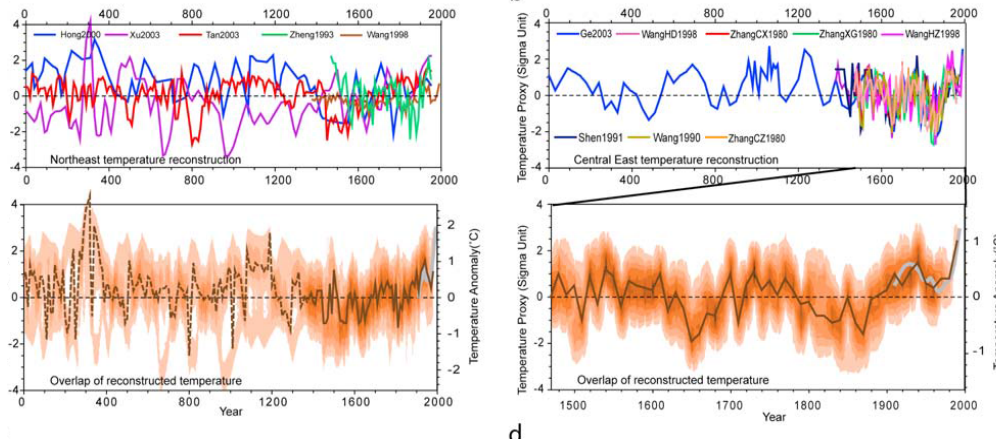




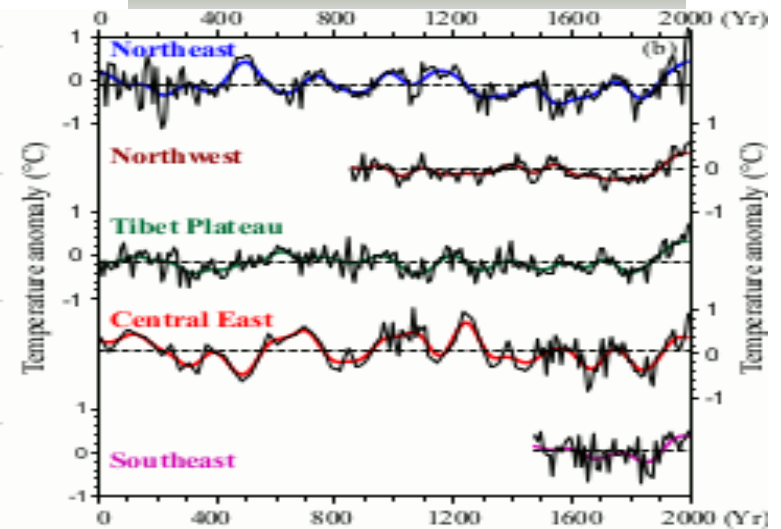
Temperature Reconstructions in China from literature

Regional reconstructions

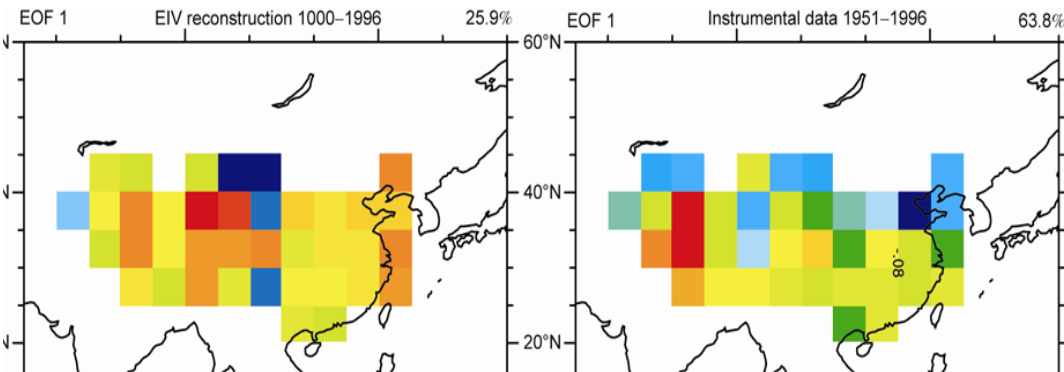
Ge et al., Geophys. Res. Lett., 2010



Ge et al., Clim. Past, 9, 2013



China reconstructions

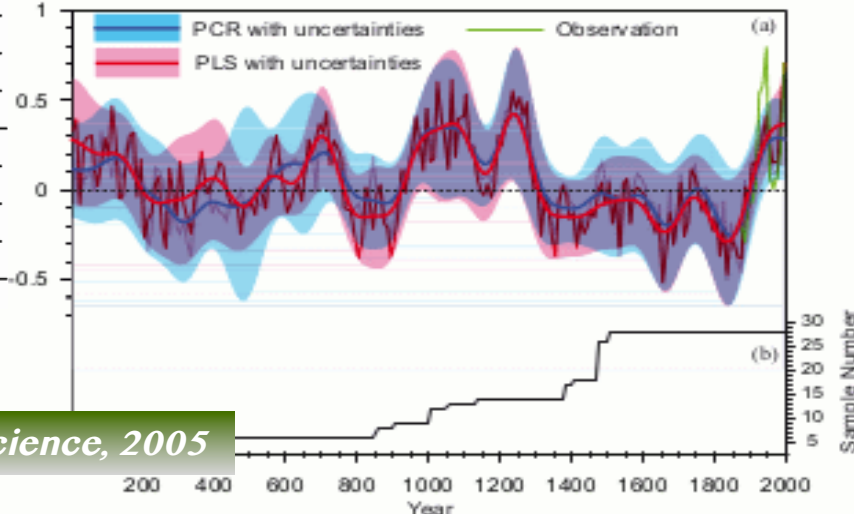


Shi et al., Science China, 2013

Rutherford et al., J. Clim., 2005

Moberg et al., Science, 2005

Ge et al., Clim. Past, 9, 2013



Temperature Reconstructions in China

China reconstructions

A **review** of the state-of-the-art of last millennium/last 2k temperatures in China from reconstructions

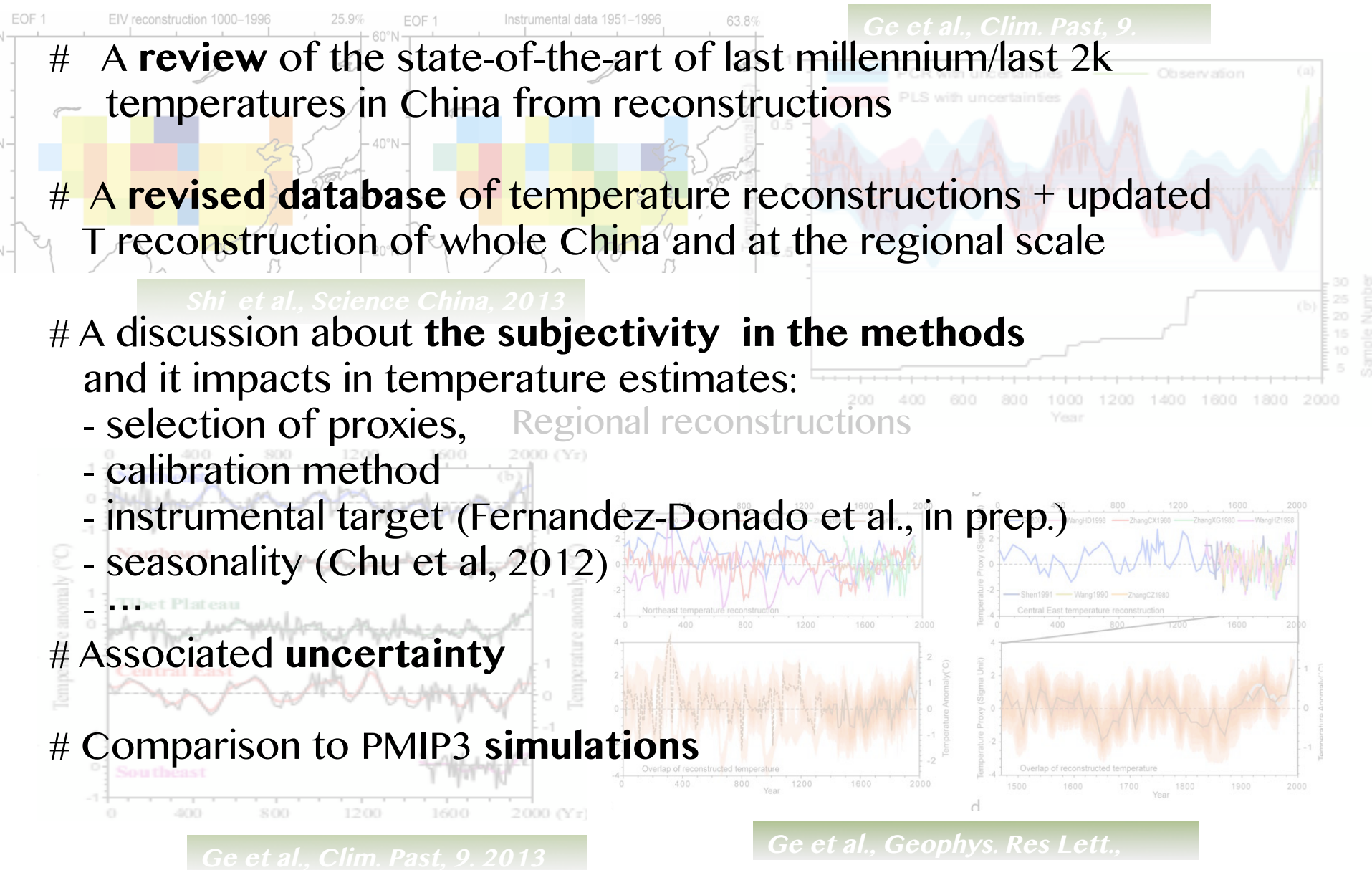
A **revised database** of temperature reconstructions + updated T reconstruction of whole China and at the regional scale

A discussion about **the subjectivity in the methods** and it impacts in temperature estimates:

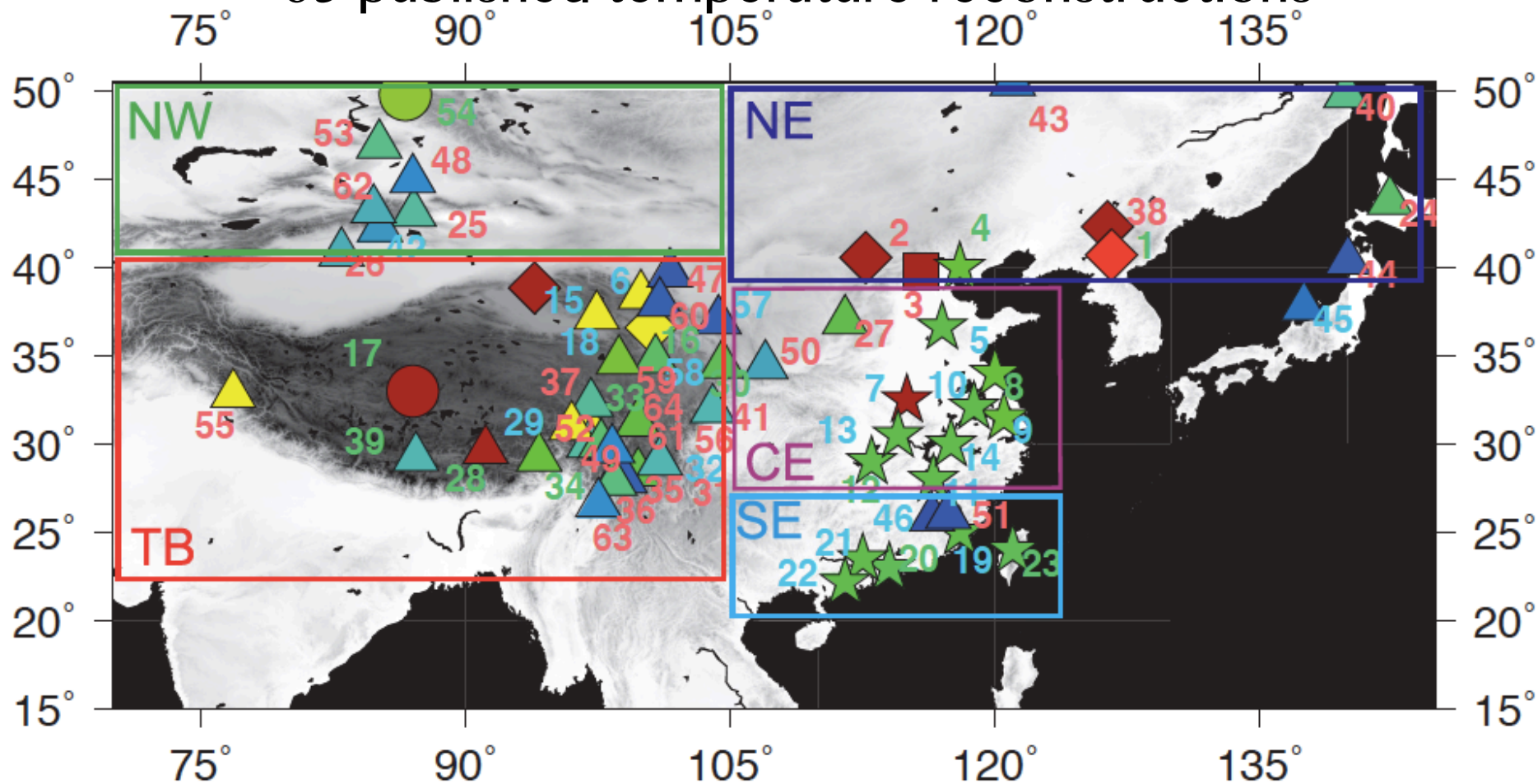
- selection of proxies,
- calibration method
- instrumental target (Fernandez-Donado et al., in prep.)
- seasonality (Chu et al, 2012)
- ...

Associated **uncertainty**

Comparison to PMIP3 **simulations**

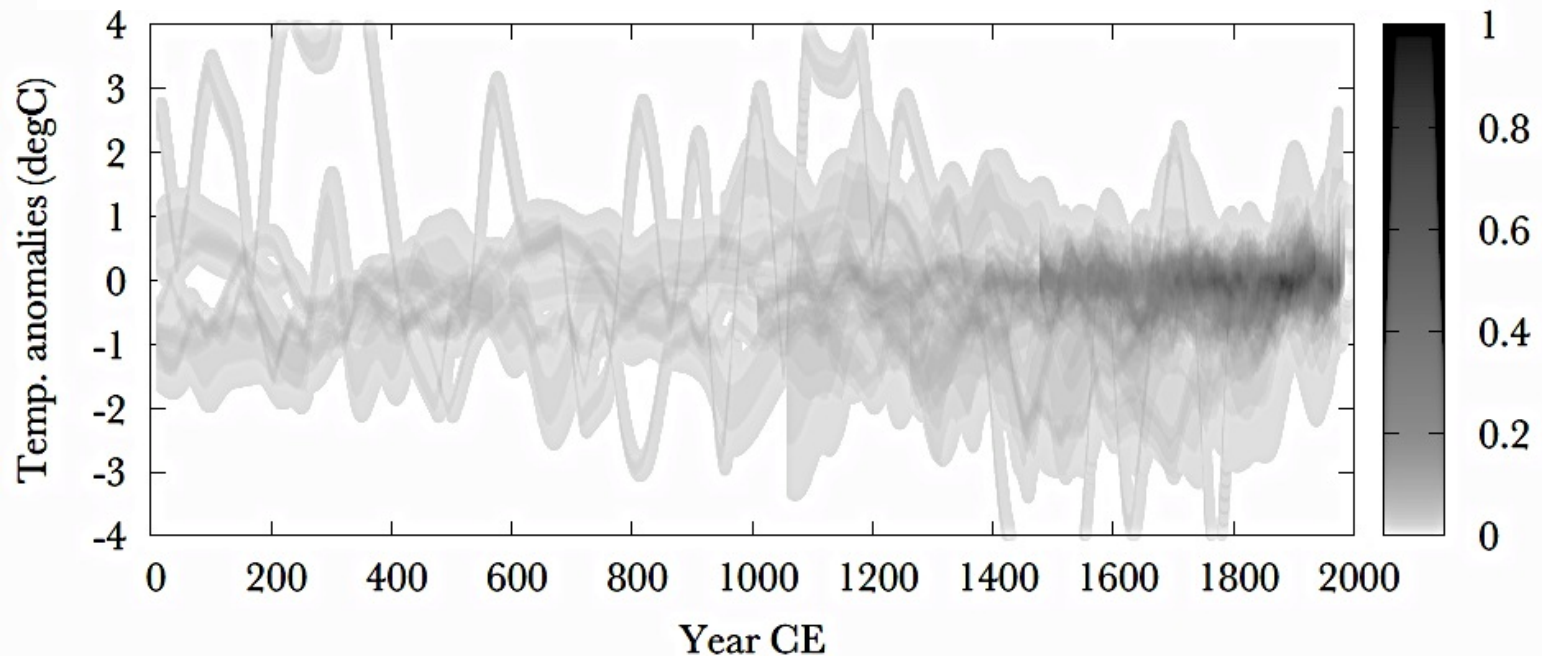
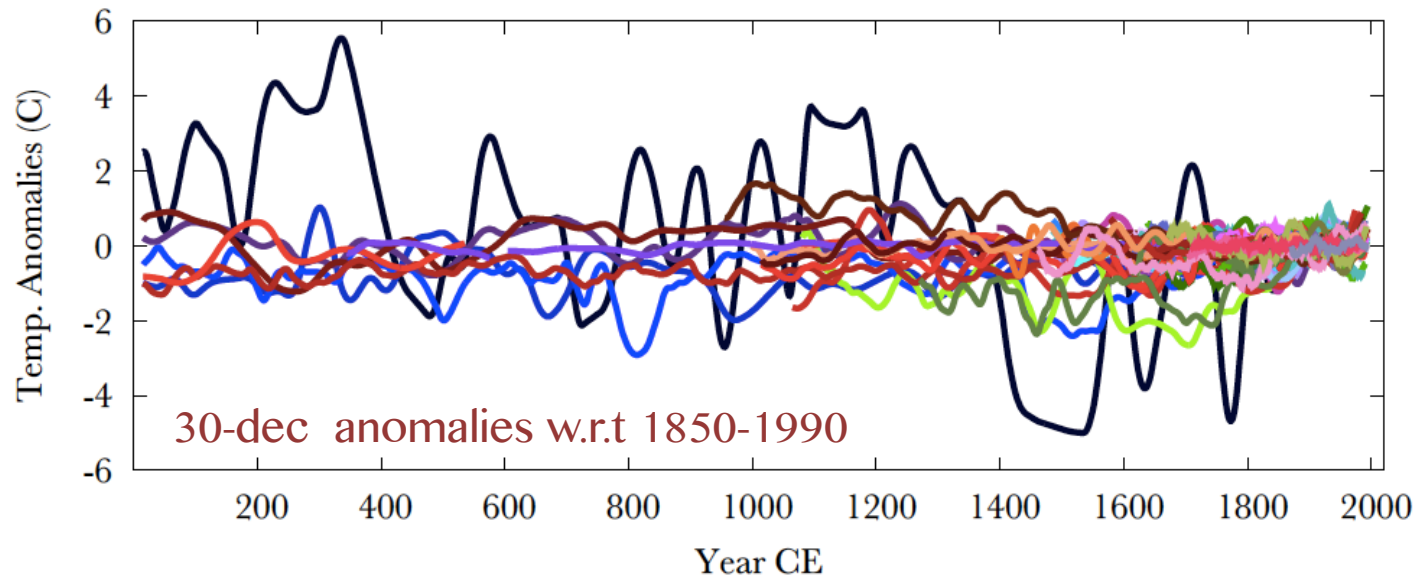


65 published temperature reconstructions

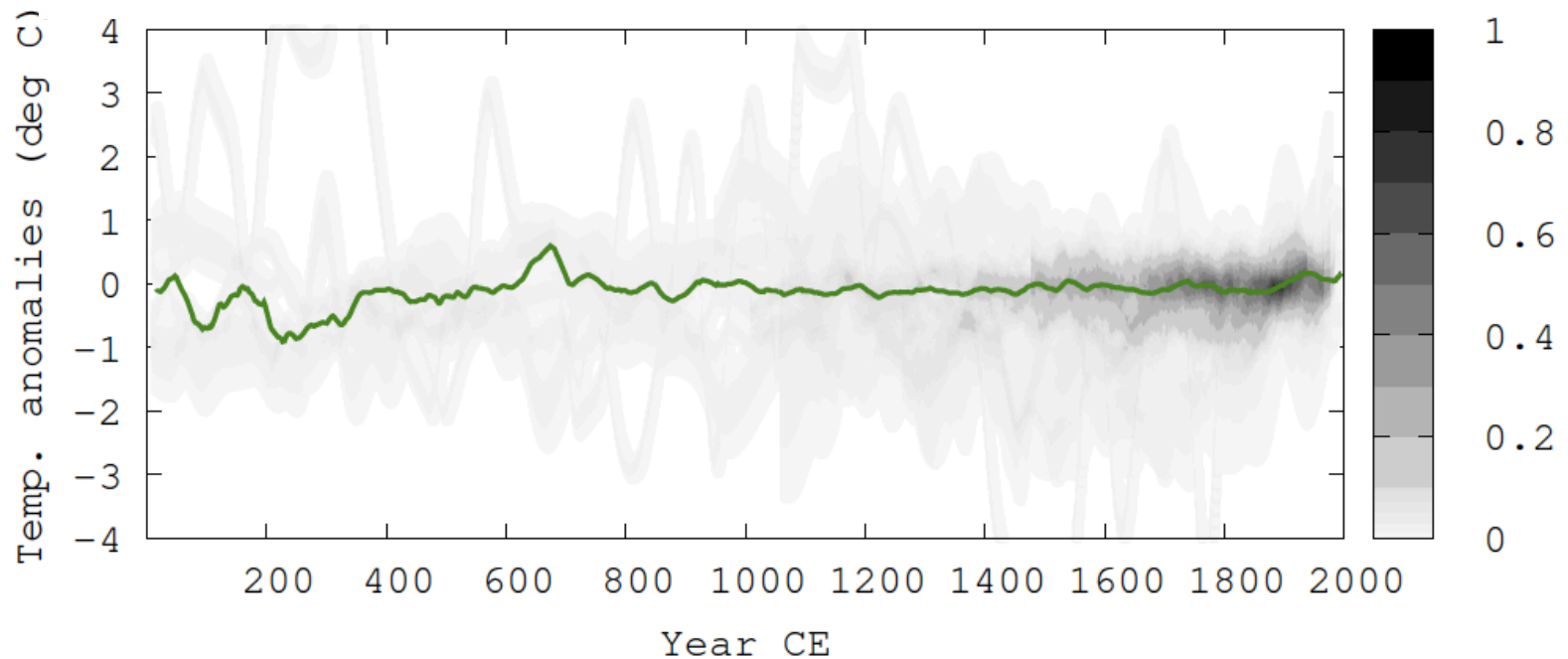
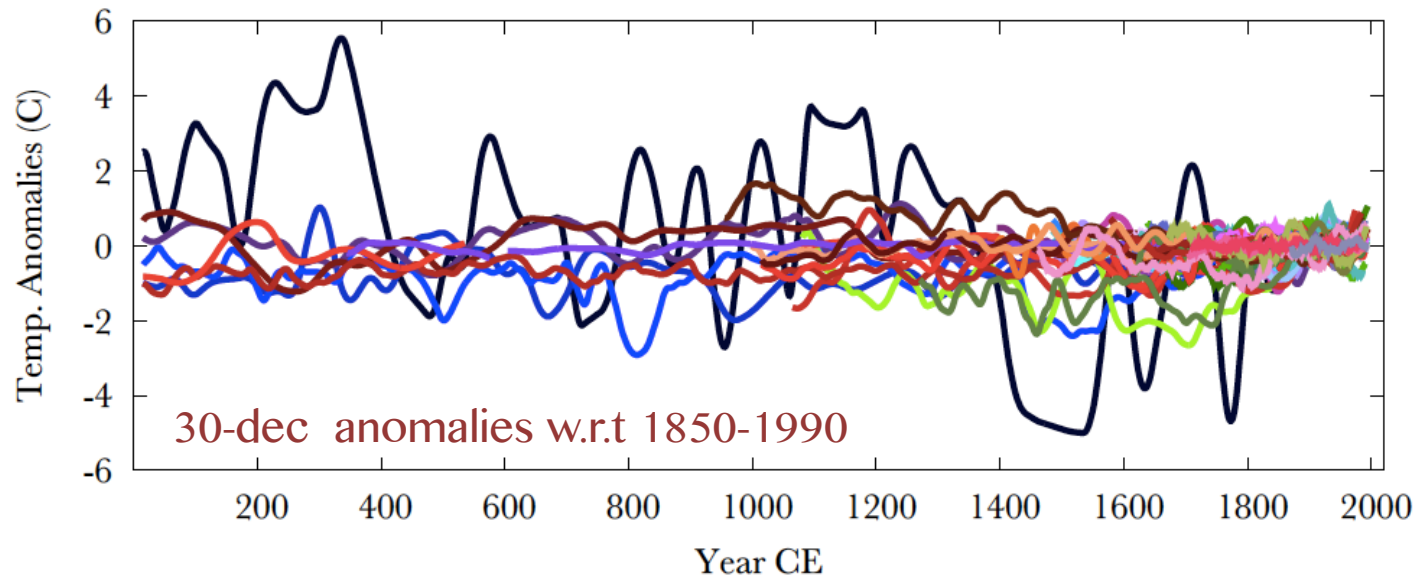


x=warm season
y=cold season
z=annual

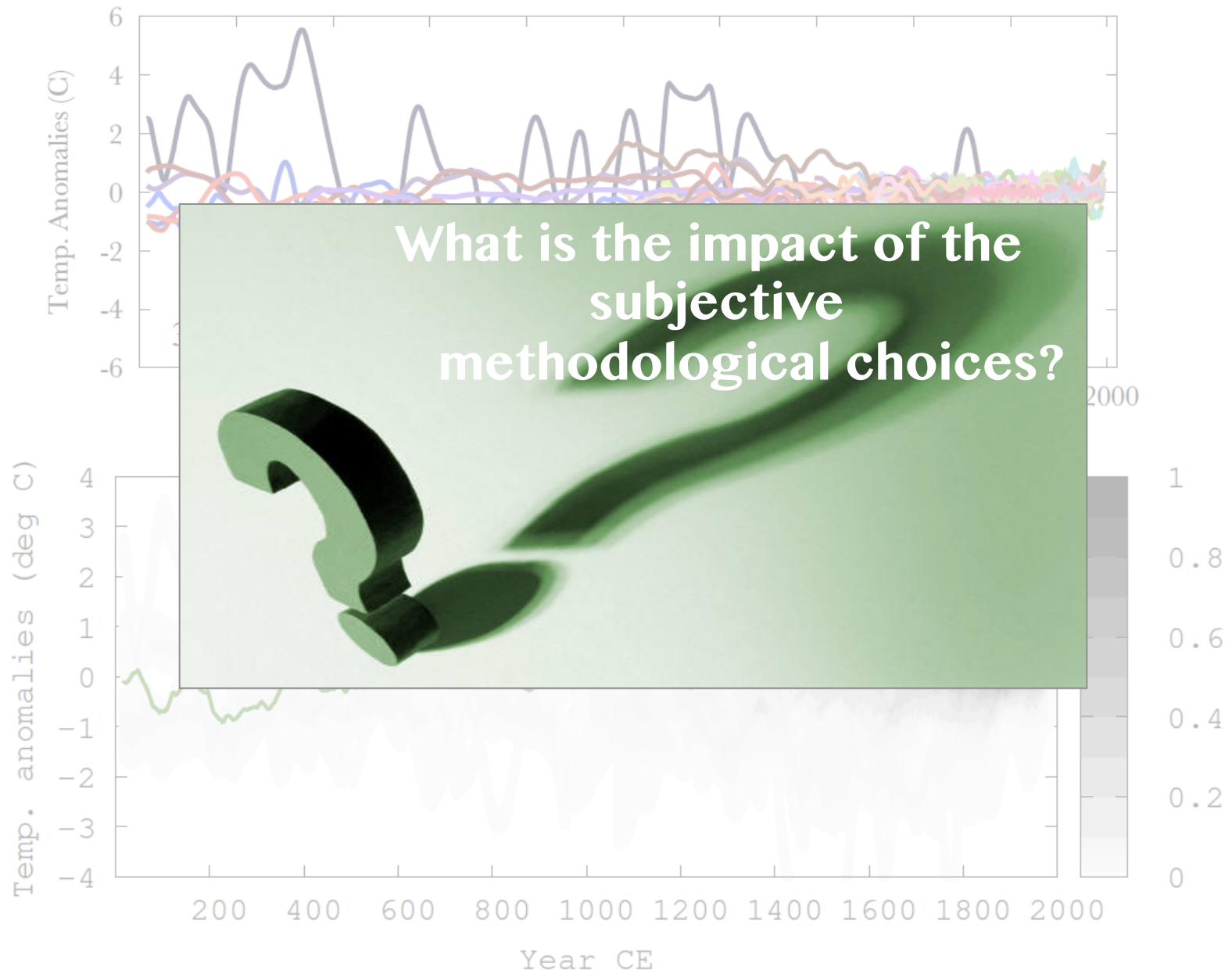
65 published temperature reconstructions & the statistical uncertainty



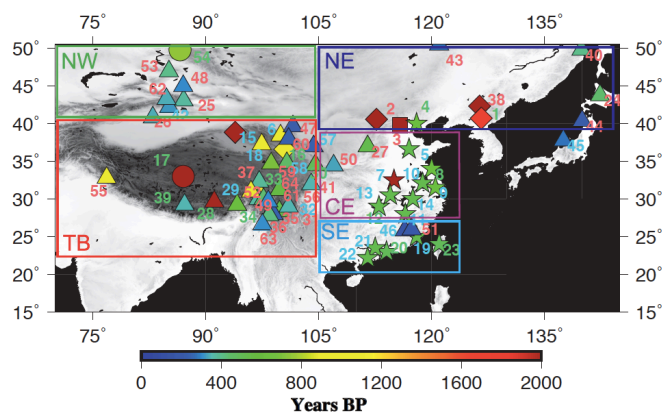
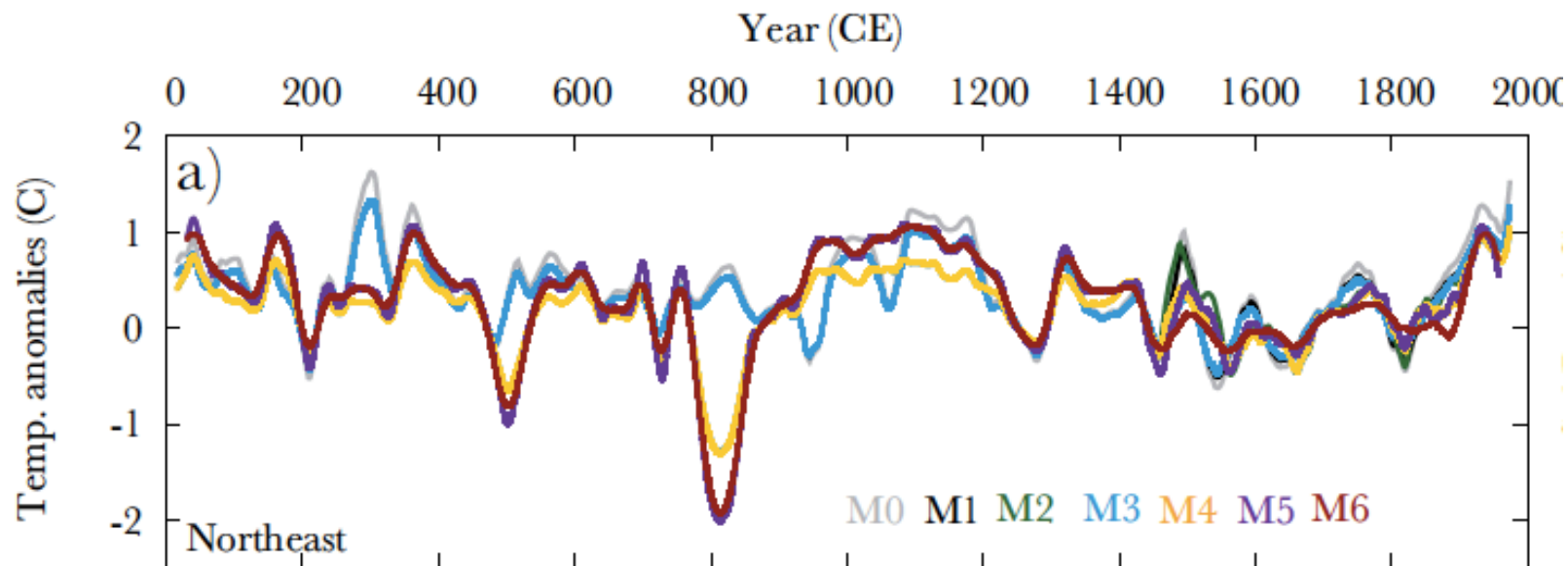
65 published temperature reconstructions & the statistical uncertainty



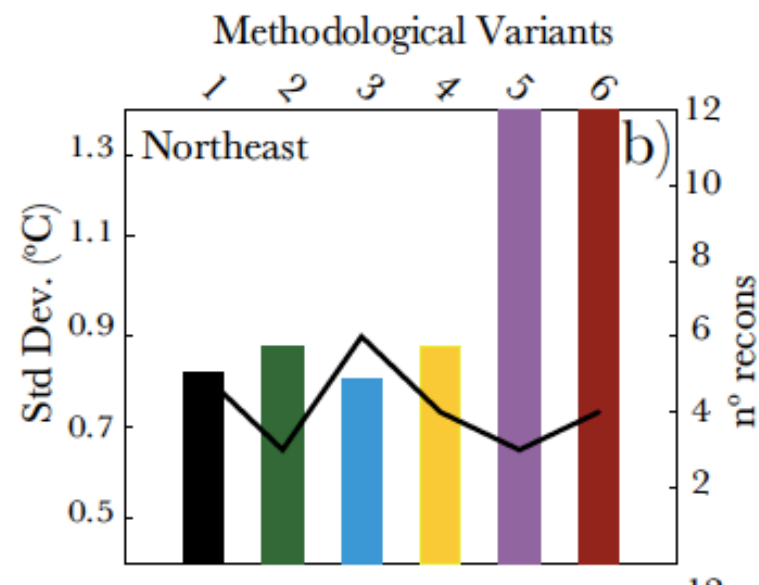
65 published temperature reconstructions & the statistical uncertainty



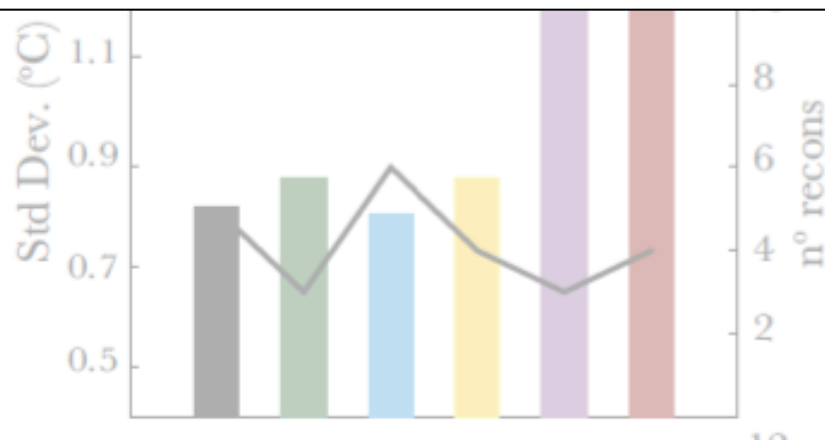
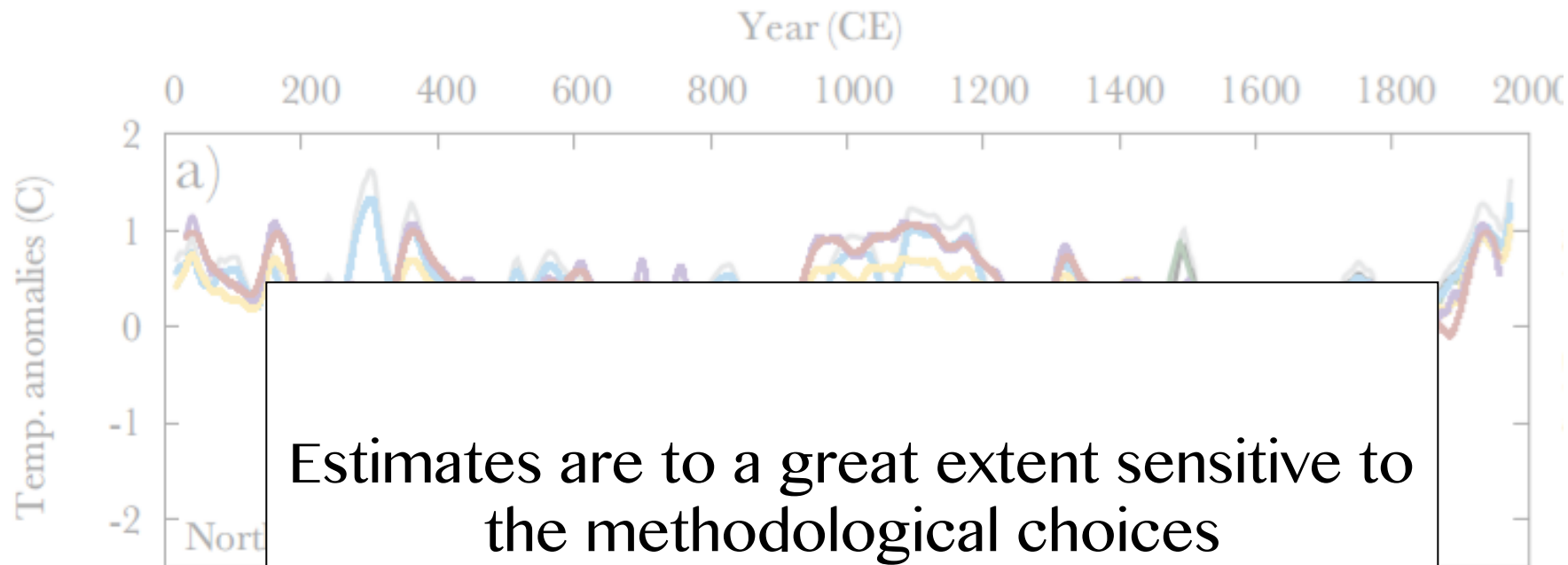
Methodological sensitivity



Version	Reconstructions	Re-calibration method
M0	[Ge10,13]	Regional
M1	[Ge10,13 _{pseudo}]	Regional
M2	[Ge10,13 _{pseudo}] - NRR	Regional
M3	[Ge10,13 _{pseudo}] + N	Regional
M4	[Ge10,13 _{pseudo}] - NRR + N	Regional
M5	[Ge10,13 _{pseudo}] - NRR	Local
M6	[Ge10,13 _{pseudo}] - NRR + N	Local

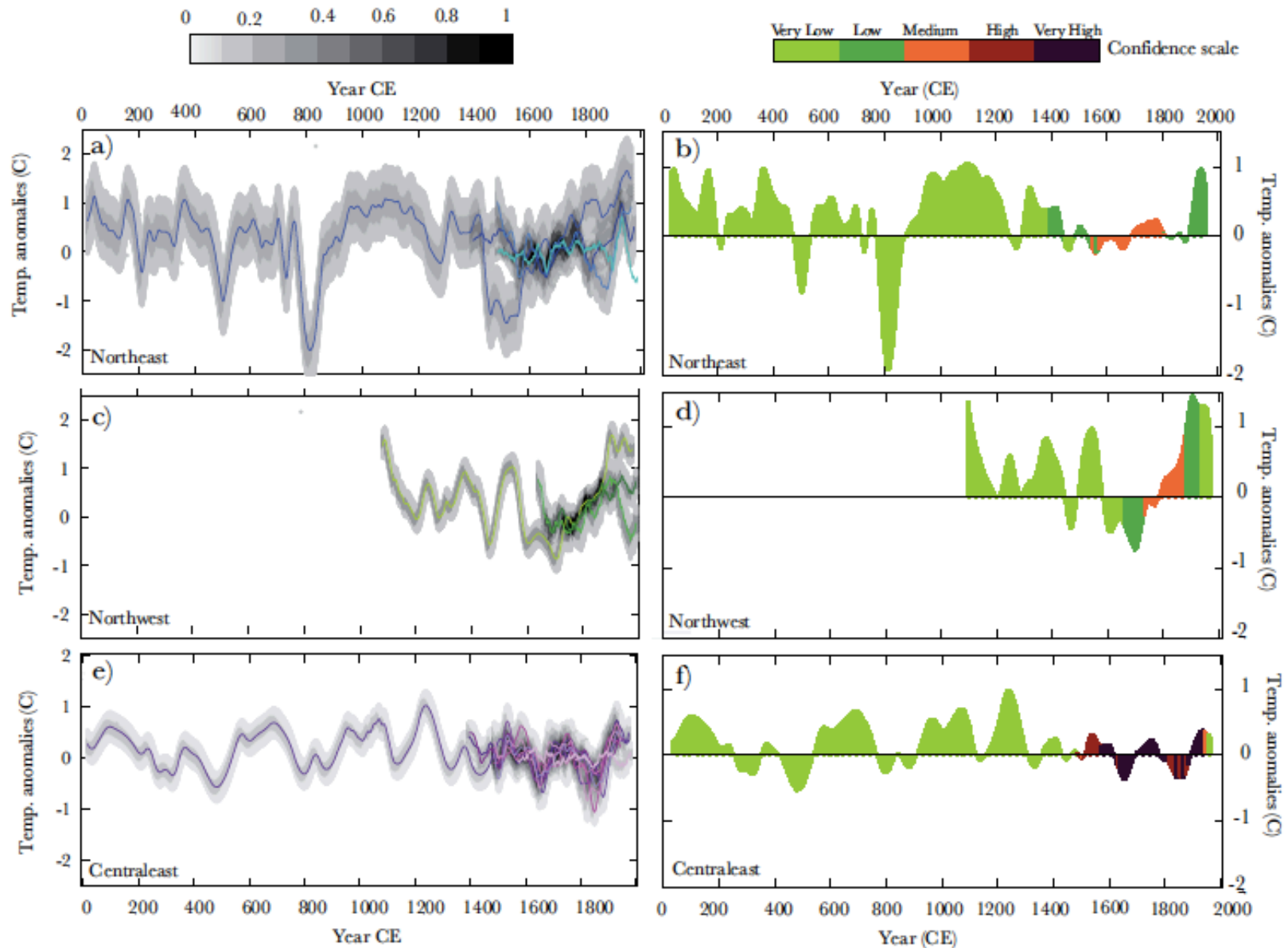


Methodological sensitivity

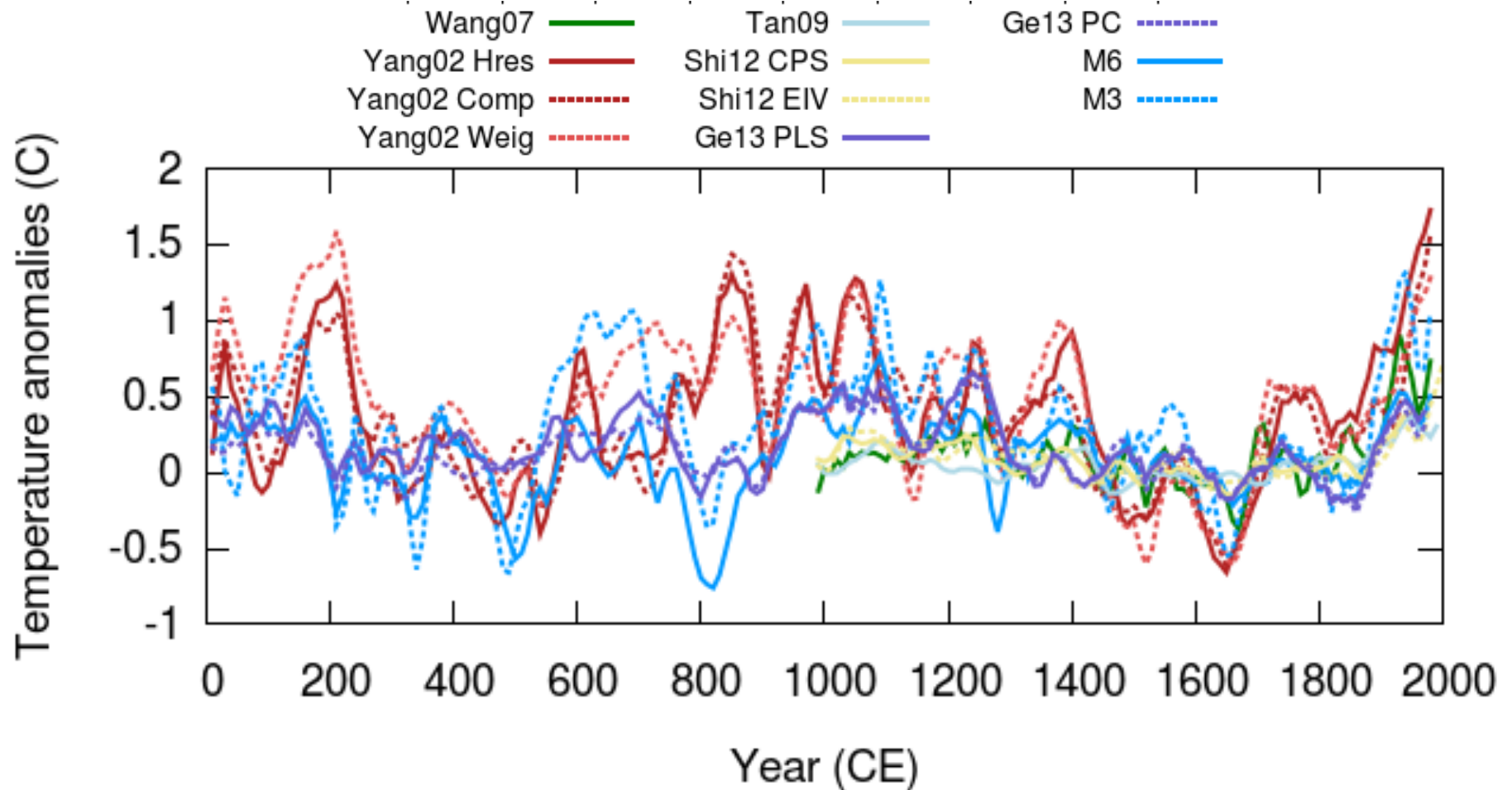


Regional variability of the last 2k: confidence?

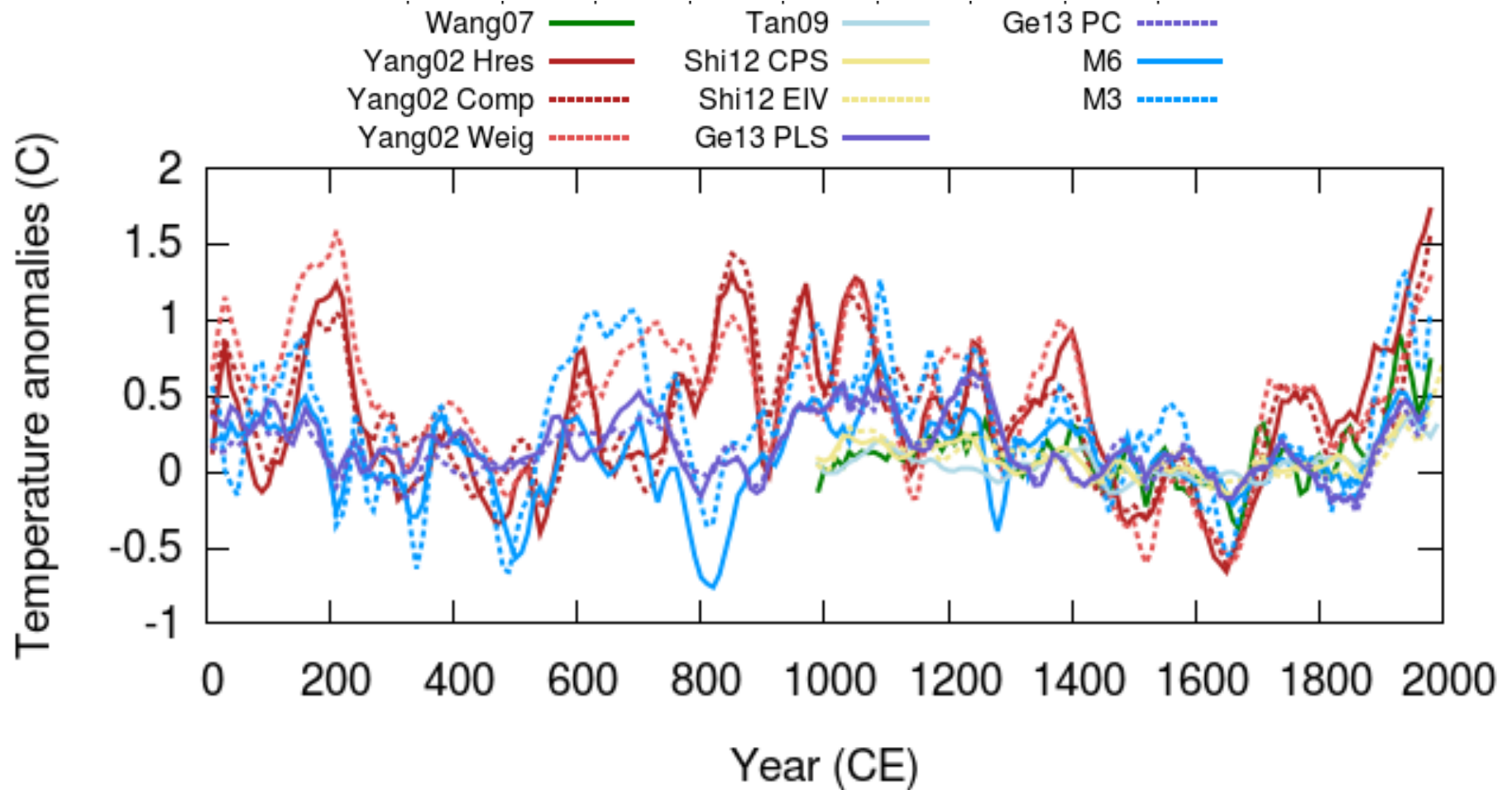
Qualitative vs quantitative uncertainty?



China temperature reconstructions



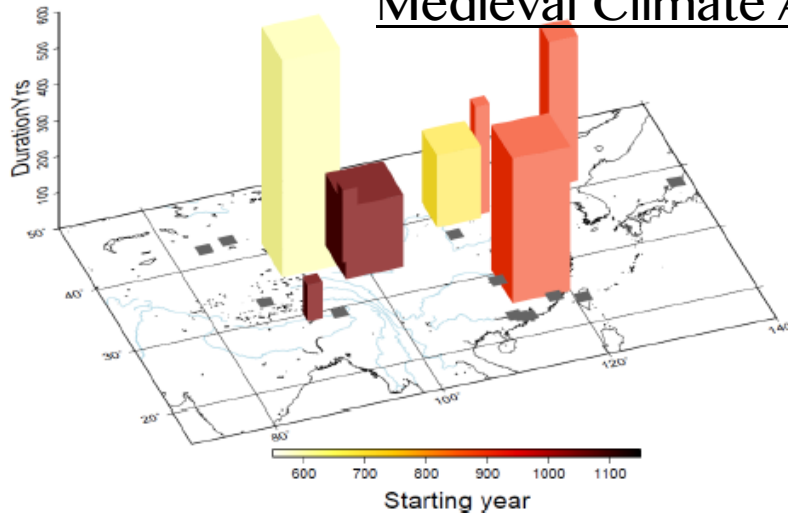
China temperature reconstructions



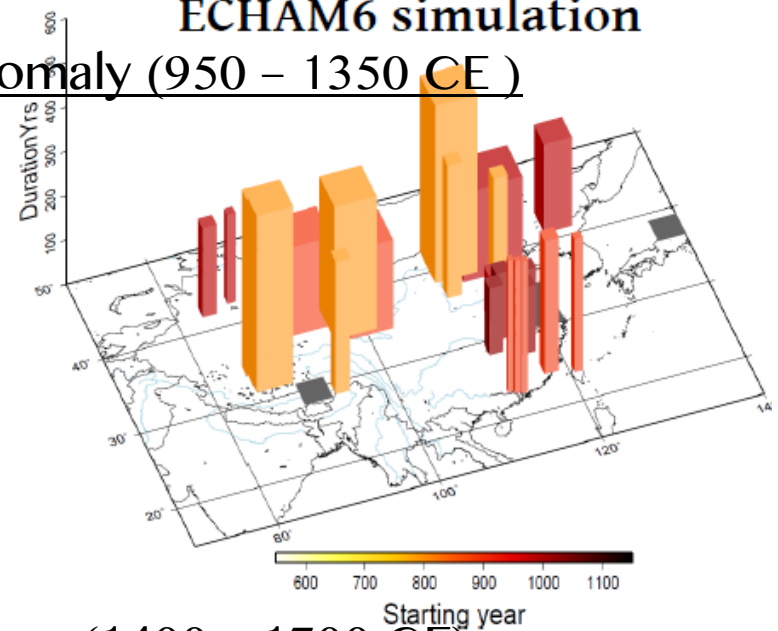
Last Millennium key periods in China from simulations and reconstructions

Reconstructions

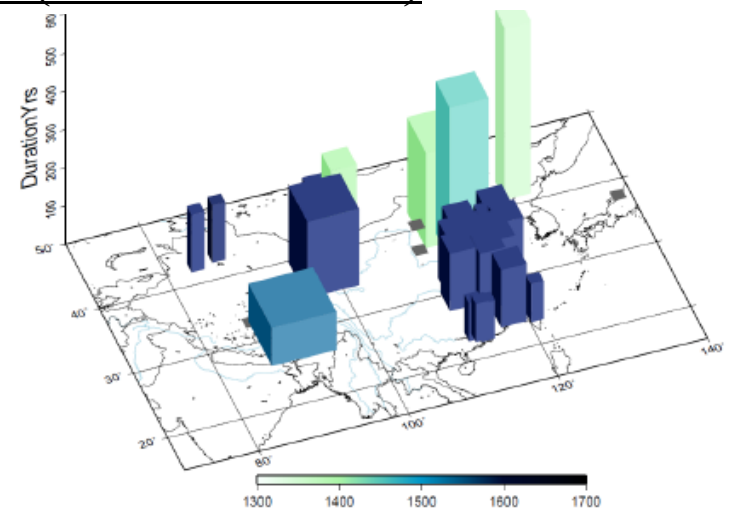
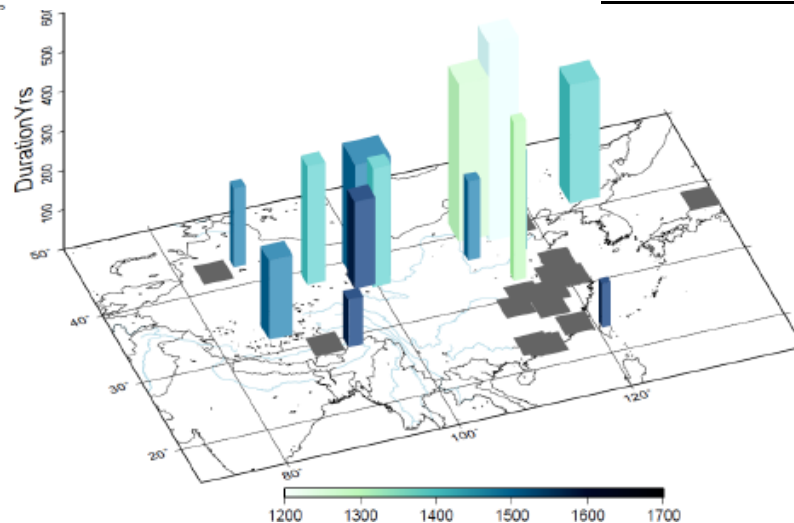
Medieval Climate Anomaly (950 – 1350 CE)



ECHAM6 simulation



Little Ice Age (1400 – 1700 CE)

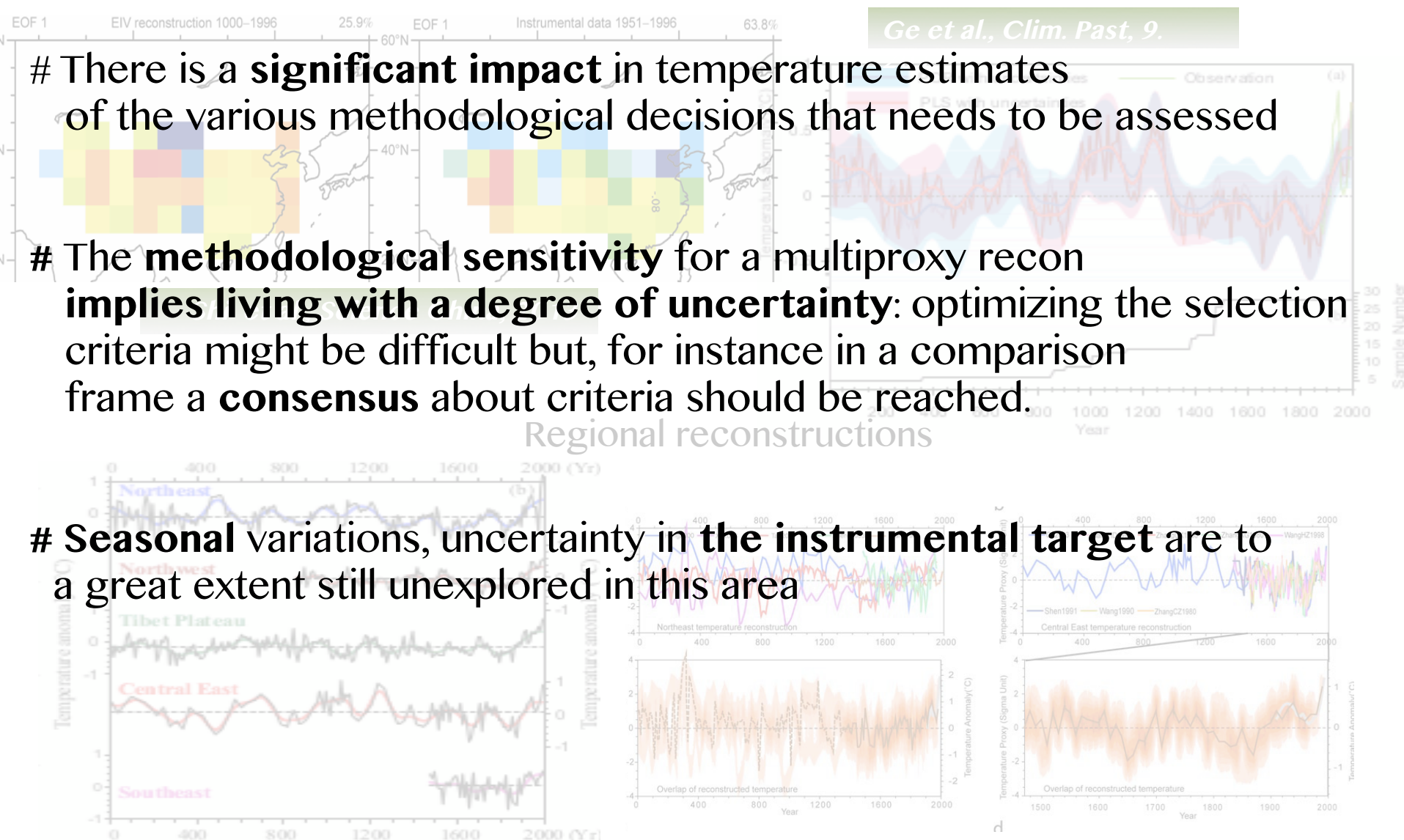


CONCLUSIONS

There is a **significant impact** in temperature estimates of the various methodological decisions that needs to be assessed

The **methodological sensitivity** for a multiproxy recon implies **living with a degree of uncertainty**: optimizing the selection criteria might be difficult but, for instance in a comparison frame a **consensus** about criteria should be reached.

Seasonal variations, uncertainty in the instrumental target are to a great extent still unexplored in this area



Last Millennium/Last 2k temperatures in China based on reconstructions and compared to simulations

E. García Bustamante (CIEMAT)
J. F. González Rouco (UCM)
L. Fernández Donado (UCM)
J. Luterbacher (U. Giessen)
J. Jungclaus (MPI- Hamburg)

EMS 2016. 12-16 Sep, Trieste, Italy



Source: http://www.co2science.org/data/mwp/studies/l1_gisp2.php

Chinese Dynasty/Solar Minimum Overlay by David DuByne