

Modeling human-water-systems: Towards a comprehensive and spatially distributed assessment of co-evolutions for river basins in Central Europe

Peter Krahe, Enno Nilson, Malte Knoche & Anna-Dorothea Ebner von Eschenbach

Federal Institute of Hydrology, PO Box 200253, 56002 Koblenz, Germany

krahe@bafg.de

Abstract

In the context of medium to long term river basin and flood risk management there is a growing need to improve the understanding of and the feedbacks between the driving forces "climate and socio-economy" and water systems, e.g. by combining scenarios of the global and regional climate change with those of developments of the society. Although progress has been made in the recent years, several methodological challenges still exist for the development of supra-regional Water Management Strategies. Those should take into account the social and environmental requirements across national, catchment, and sectoral boundaries in order to anticipate possible regional water problems or specific water usages. Progress refers to improvements in the availability of homogeneous hydro-meteorological and hydrological observation and modelling products, including refined scenarios in climate and impacts in the (natural) hydrological system. Main challenges refer e.g. to the availability of long time series of data and indicators representing the socio-economic part of the human-water-system as well as its integration into hydrological models at appropriate spatial and temporal scales. We make use of a variety of data resources to illustrate interrelationships between different constituents of the human-water-systems. Taking water storage for energy production as an example we present a first analysis on the co-evolution of socio-economic and hydrological indicators. The findings will serve as a starting point and validation target for the development of conceptual, but fully coupled socio-hydrological models for selected sectors and regions. These models will be used to generate integrated scenarios of the climate and socio-economic change. Further steps leading to large scale, cross-sectoral and cross-catchment assessments will be discussed.

Key words integrated modeling; decision support; scenario analysis; water resources management; human-water-system

1 Introduction

The adequate availability of water is an important determinant for the socio-economic development - with water representing either an essential raw material or a threat e.g. in the case of flood events. At the same time the socio-economic development affects the water resources and the environment. Extensive reviews of challenges as well as guiding principles of developing integrated socio-hydrological models for (i) system understanding (ii) forecasting and prediction as well as (iii) policy and decision-making have recently been given by Sivapalan & Blöschl (2015) and Blair & Buytaert (2016). With this study we intend to assess the need and the feasibility of socio-hydrological approaches for solving practical management questions (cf. iii).

In the context of medium to long term river basin and flood risk management there is a growing need to improve the understanding of and the feedbacks between the water and the human component. Among others, scenarios of global and regional climate change need to be combined with those of developments of the society to come to "adaptive scenarios" instead of "climate driven impact scenarios". As a first step of an ongoing study we explore relevant human-water loops in a major part of Central Europe (Fig. 1).

In this paper (i) regions where human interference with the water cycle is particularly strong will be highlighted by a hydrological modelling approach, and (ii) time scales and potential drivers of a human-water system will be explored using the Swiss water power sector as a case study.

2 Study area

Our study area covers a major part of Central Europe (approx. 800.000 km²), namely the German river catchments including their international upstream parts (Fig. 1). In a global perspective this area is usually not mentioned among the regions facing water resource problems. However, there are strong regional disparities of the natural water resources, which roughly follow a southwest-northeast gradient with the Alps in the south being an important 'water tower'. There is also a distinct seasonal contrast in natural water availability. Under the influence of the Alps (extending to the upper Rhine and southern tributaries of the Danube) runoff is usually higher in the summer months, while in the remainder of the area winter runoff is higher. Climate change may lead to stronger seasonal contrasts of water availability in the latter case (e.g. Schneider et al., 2013; Nilson et al., 2014).

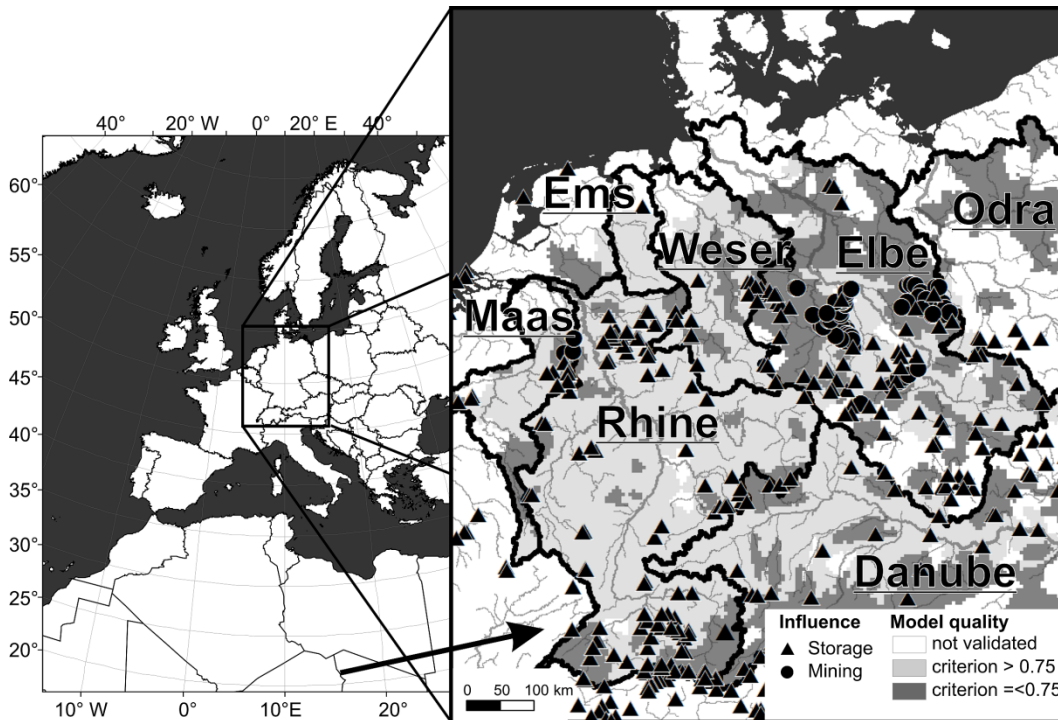


Fig. 1: Model domain (left map) and validation results (right map) for river basins of the conceptual hydrological model LARSIM-ME. Grey scales in the right panel show classified values of the coefficient of determination (R^2) of daily flow values (Nov.1976 to Oct. 2005). Locations of dams and mining were compiled from various sources (among others Hydrological Atlas of Germany, HAD; Global Reservoir and Dam Database, GRanD; Lehner et al., 2011). Arrow marks the region selected as a case study

Also, the water demand is unequally distributed regionally, being concentrated in a number of large agglomeration areas. The socio-economic systems in Central Europe are optimized to and dependent on relatively high and stable water resources. Consequently, the region is vulnerable to changes of water availability. Water resources and water use are thus regularly monitored on a national and continental level. Also, the "German Adaptation Strategy to Climate Change" introduces several indicators describing water resources (UBA 2015).

3 Data and Methods

Main challenges in socio-hydrological studies refer to the availability of long time series of data and indicators representing the socio-economic part of the human-water-system as well as the level of conceptualization and complexity at appropriate spatial and temporal scales that allow integrating them into hydrological models. We start assessing these challenges by identifying regions in our study area where human interference with the water cycle is particularly strong.

For that purpose, a hydrological model is applied for Central Europe ("LARSIM-ME") using a new homogeneous hydro-meteorological data product (DWD-BFG HYRAS) as input. The model has been parameterised by regionalization of model parameters from catchments that show no/weak human influence. We assume the simulated runoff to reflect natural conditions and compare them with observed runoff data and with an inventory of dams and mining areas the model domain.

Starting from this version of the water balance model, human influence is currently successively being implemented. This will be done using operation plans of dams and water transfers, pumping volumes from open pit mines and water abstraction rules. Acquisition of this kind of information over a large region as the overall model domain is an intricate task because of the diversity of institutions and sectors involved. In some cases detailed information is often not available at all because it is retained due to privacy reasons.

Therefore, we evaluate methods to synthesize operation data for our model domain based on information from selected case studies that show an extraordinary good data situation. On top of data availability, each case study has to fulfil two prerequisites: (i) the sector has to be dependent on at least one component of the water balance (ii) the regional water balance is modified by the sector with at least one management measure.

In the following section we choose the case study "Water Power in Switzerland" as an example to highlight available data and to display time scales and drivers of change. Data resources are given in Table 1. Analyses with regard to co-evolution processes will be performed by comparing time series of these variables with water resources data as well as meteorological and hydrological data.

Table 1: Data used in case study "Water Power in Switzerland" (Δt =temporal resolution, d= daily, m=monthly, a=annual; as plotted in Fig. 2 and Fig. 3)

Theme	Δt	Source
2m Air temperature upstream Basel	a, m	CRU TS3.10 (Harris et al., 2014) & EOBS8 (Haylock et al., 2008)
Runoff at Basel-Rheinhalle	a, d	FOEN, Federal Office for the Environment (Switzerland)
Storage water levels	m	SFOE, Swiss Federal Office of Energy
Power production from reservoirs	m	SFOE, Swiss Federal Office of Energy
Electricity consumer price index	m	SFOE, Swiss Federal Office of Energy
Electricity consumption	m	SFOE, Swiss Federal Office of Energy
Consumer price index electricity (type III)	m, a	SFOE, Swiss Federal Office of Energy
Population	a	FSO, Swiss Federal Statistical Office
Gross domestic product GDP	a	< 1995: Zuercher, B. (2010): Das Wachstum der Schweizer Volkswirtschaft seit 1920. Die Volkswirtschaft 1/2-2010. 9-13. > 1995 (change): FSO, Swiss Federal Statistical Office
Storage capacity	a	SwissCOD, Swiss Committee On Dams
Water power production	a	< 1985: Swiss Energy Council (ed.): Energiestatistik der Schweiz 1910-1985. Zürich 1987. 60 p. ≥ 1985: SFOE, Swiss Federal Office of Energy
Electricity consumption	a	< 1990: Swiss Energy Council (ed.): Energiestatistik der Schweiz 1910-1985. Zürich 1987. 60 p. ≥1990: SFOE, Swiss Federal Office of Energy

4 Results

Water balance simulations

Selected results of the large scale water balance simulation run with regionalized parameters for the period Nov. 1976 to Oct. 2005 are depicted in Fig. 1. As the model parameters were determined in catchments with no/weak human interference, the simulation can be regarded as representing

natural flow conditions. The dark grey regions show particular strong deviations between simulations and observations. These regions are most frequent in the River Elbe catchment, the Alpine subcatchments of the Rivers Danube and Rhine, and in some catchments of tributaries of the Lower River Rhine. The spatial distribution of clusters of mining activities and water storages match well these regions (Fig. 1) indicating important modifications of the natural hydrological system in Central Europe (transfer systems are not shown). Obviously, water balance simulations aiming to match the observed runoff require additional representation of human activities.

Case study "Water Power in Switzerland"

Dams are mainly constructed and operated in Switzerland for energy supply. In the context of water resources monitoring, developments of water storage capacity of dams as well as of management rules are of main interest. Fig. 2 shows a long term perspective on water storage capacities in Switzerland, runoff at River Rhine gauging station Basel near the Swiss/German border as well potential climatic and socio-economic drivers of change. Available data allows this assessment on an annual basis for the period 1910 to 2012.

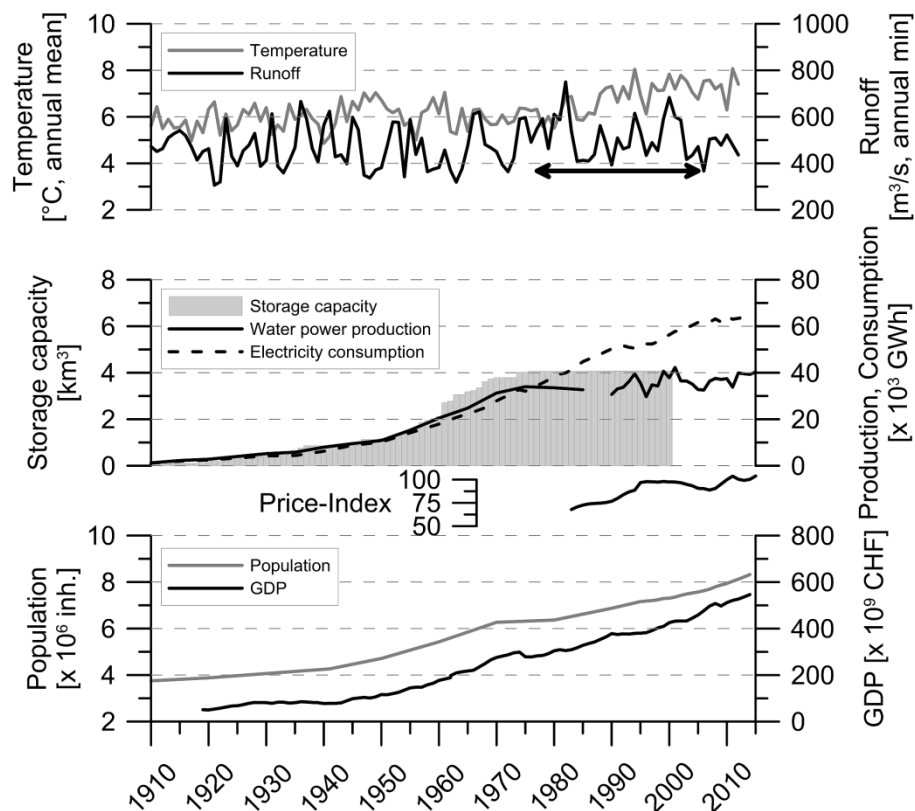


Fig. 2: Annual data of water storage capacity of dams, water power generated (storage plus run-off power plants), and electricity consumed, hydrometeorological conditions and socio-economic drivers in Switzerland since 1910. Runoff and temperature refer to hydrological years (Nov.-Oct.). The arrow marks a period of a higher level of low flows after 1970. (Data sources: cf. Table 1)

At the beginning of the 20th century storage capacities and electricity consumption were very low. At this time water power was used more or less mechanically in the vicinity of the rivers (Swiss Energy Council, 1987). In the following decades storage capacities and water power production increased continuously until the 1970 as a consequence of several developments: (i) a Swiss law targeting at the utilization of water power was released in 1918 (ii) technical innovations allowed the construction of larger dams and (iii) improved distribution of electricity over large distances. The latter also preconditioned the general electrification of the society and economy, which were both steadily growing. Since the mid of the 1970ies, there was no further increase of storage capacity and water power production. At the same time nuclear power was prioritized to meet the still growing

electricity demand (Swiss Energy Council, 2015). It may be noteworthy, that after the mid 1970ies onwards the annual minimum runoff at gauge Basel hardly did ever drop below $400 \text{ m}^3/\text{s}$ (cf. arrow in Fig. 2). This can to a large degree be attributed to the storage capacity implemented.

From 1995 onwards water power production data shows only minor long term increases (due to optimization of existing power plants), but a stronger year-to-year variability. This is at least in part due to a change of the data source and the way the data were calculated (cf. references given in Table 1). Nevertheless, these data may give an indication that - although socio-economical drivers dominated the centennial development - meteorological and hydrological conditions affect water power production variability on a year-to-year scale. This coincidence is, however not very clear on the annual scale.

In a monthly view (Fig. 3), the individual components of this human-water system show very systematic annual cycles. Storages are filled during the summer when precipitation and snow melt water runoff is high. The maximum level of water storage is usually reached in September or October. During the winter season, when runoff is typically low, water is released. The water power production shows a vague pattern with one weak peak during the high runoff period in summertime and one stronger peak during the release period in wintertime. The overall consumption of electricity shows - on top of a long term increase up to the year 2006 - a rather regular pattern with a single major peak during the heating season in winter. The amplitudes of most variables vary only moderately and the pattern persists remarkably stable over the years. One exception is the winter of 2006/2007 which was extraordinary warm. This coincides with higher than average minimum water levels of storages due to lower electricity consumption (less heating).

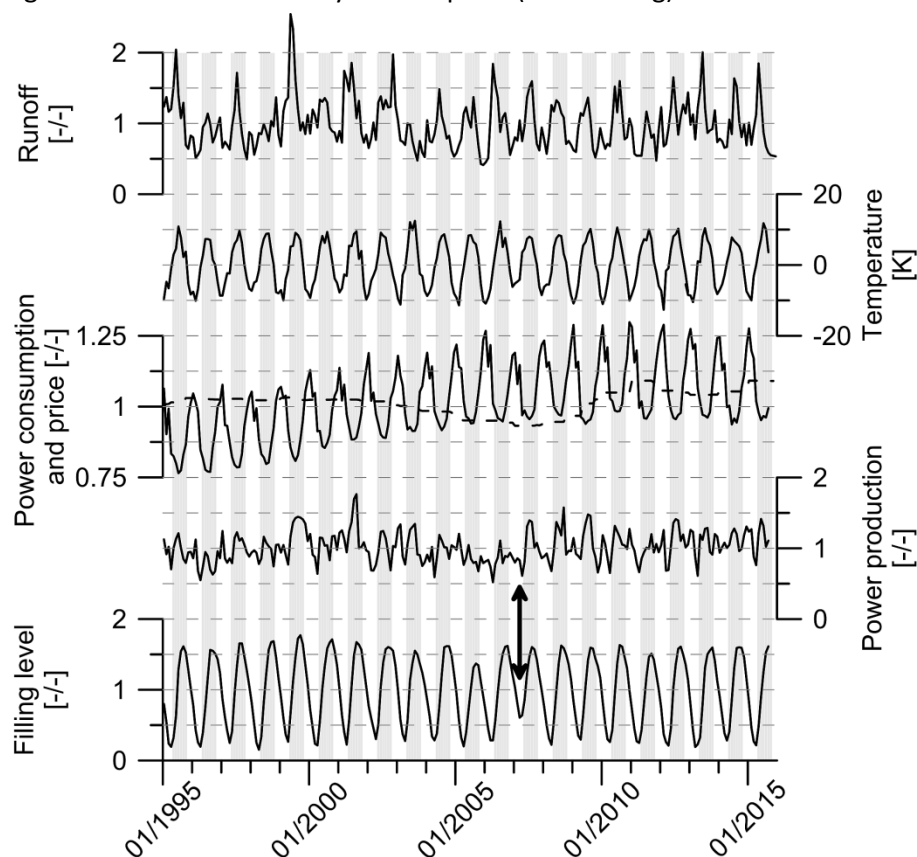


Fig. 3: Time series of monthly water storage filling level, water power generation, electricity consumption/prices and hydrometeorological conditions in Switzerland since 1995. All data were converted to anomalies with respect to their averages of the period 1995-2010. (dashed line: Electricity consumer price index; shading indicates hydrological seasons with white = winter; the arrow marks a singularity in winter 2006/07) (Data sources: cf. Table 1)

5 Discussion and Conclusions

Clearly, potential water availability is the backbone of activity in the water power sector. However, technological developments were the main drivers for the onset and the cessation of the growth of water power production and the related modifications of the natural water system through reservoirs. The increase of water power production took place over three to four decades. Variability of natural drivers as reflected e.g. by air temperature and runoff manifests as second order variability in water power time series. This is visible on a year-to-year basis, but much more on a monthly timescale.

The steady seasonal pattern of reservoir operation represents a feature that could be described by comparatively simple models. This would allow us to generate storage data for the past as well as for climate impact studies. However, the long term socio-economy-driven developments tell us, that the pattern may be stationary only for limited time. Global climate change, a change of energy mix in Europe, and the ongoing deregulation of the energy market in Switzerland are possible candidates to cause changes in the operation of Swiss dams. Estimating the consequences of these so far unobserved phenomena remains a challenge.

Similar case studies are underway in other regions of our model domain and examining other sectors such as urban water supply, agriculture, navigation etc. We attempt to build simple conceptual models representing those sectors which interfere most with the water cycle in Central Europe. By combining these models with the water balance model we try to provide explicit information on spatial and temporal scales that are suitable for supra-regional water resources management.

References

- Blair P. and W. Buytaert (2016): Socio-hydrological modelling: a review asking "why, what and how?". *Hydrol. Earth Syst. Sci.*, 20, 443–478.
- Harris, I, Jones, P.D., Osborn, T.J. & Lister, D.H. (2014): Updated high-resolution grids of monthly climatic observations – the CRU TS3.10 Dataset. doi:10.1002/joc.3711
- Haylock, M.R., N. Hofstra, A.M.G. Klein Tank, E.J. Klok, P.D. Jones and M. New (2008): A European daily high-resolution gridded dataset of surface temperature and precipitation. *J. Geophys. Res. (Atmospheres)*, 113, D20119, doi:10.1029/2008JD10201
- Lehner, B., C. Reidy Liermann, C. Revenga, C. Vorosmarty, B. Fekete, P. Crouzet, P. Doll, M. Endejan, K. Frenken, J. Magome, C. Nilsson, J.C. Robertson, R. Rodel, N. Sindorf, and D. Wisser. (2011): Global Reservoir and Dam Database, Version 1 (GRanDv1): Dams, Revision 01. Palisades, NY: NASA Socioeconomic Data and Applications Center (SEDAC). <http://dx.doi.org/10.7927/H4N877QK>.
- Micale, F. & G. Genovese (eds.) (2004) Methodology of the MARS Crop Yield Forecasting System, Vol. 1, Meteorological Data Collection, Processing and Analysis. Contributions from: E. Van der Goot, I. Supit, H. Boogard, K. Van Diepen, F. Micale, S. Orlandi, H. Otten, M. Geuze, D. Schulze. EUR 21291 EN/1.
- Nilson, E., Krahe, P., Lingemann, I., Horsten, T., Klein, B., Carambia, M., Larina, M. (2014): Auswirkungen des Klimawandels auf das Abflussgeschehen und die Binnenschifffahrt in Deutschland. Schlussbericht KLIWAS-Projekt 4.01. KLIWAS-43/2014. BfG, Koblenz. DOI: 10.5675/Kliwas_43/2014_4.01.
- Schneider, C., Laize, C.L.R., Acreman, M.C., and M. Flörke (2013): How will climate change modify river flow regimes in Europe? *Hydrol. Earth Syst. Sci.*, 17, 325–339. doi:10.5194/hess-17-325-2013
- Swiss Energy Council (ed.) (1987 & 2015): *Energiestatistik der Schweiz 1910-1985*. Zürich 1987. 60 p.
- Umweltbundesamt (UBA) (Hrsg.) (2015): *Monitoringbericht 2015 zur Deutschen Anpassungsstrategie an den Klimawandel*. Bericht der Interministeriellen Arbeitsgruppe Anpassungsstrategie der Bundesregierung, Dessau-Roßlau, Url: <http://www.umweltbundesamt.de/publikationen/monitoringbericht-2015>